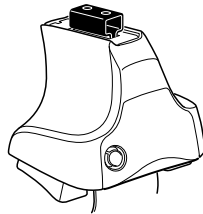
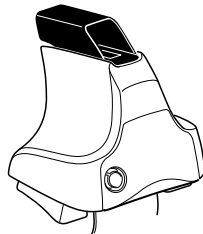
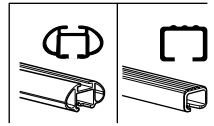


Kit 1492

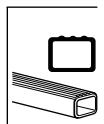
ACURA TSX, 4-dr Sedan, *09–
HONDA Accord, 4-dr Sedan, 08–
*North America



754 Rapid System
480R Rapid Traverse (North America)



480 Traverse (North America)



754 Rapid System
480R Rapid Traverse (North America)

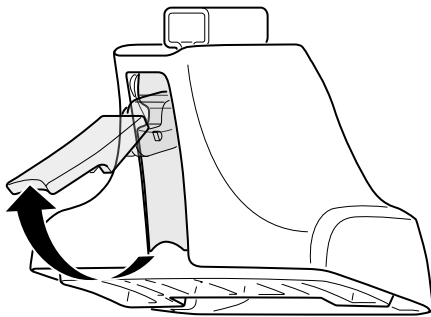
480 Traverse (North America)

(North America)

- 2x Screws
- 2x 23 mm Bolts
- 2x 17 mm Bolts
- 1x 23 mm Bolt
- 2x 23 mm Bolts
- 2x 23 mm Bolts
- 4x Nuts
- 4x Nuts
- 2x 23 mm Bolts
- 2x Screws

- 1x Bracket 569
- 2x Bracket 140
- 2x Bracket 141
- 1x Bracket 570
- 1x Bracket 615
- 1x Bracket 639
- 1x Plate (FR, FL, RR, RL)

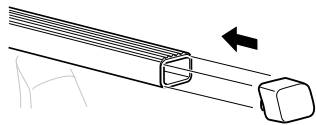
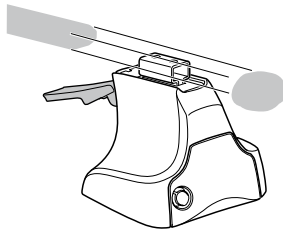
1



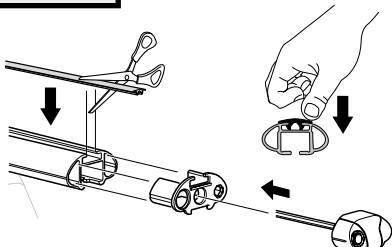
2



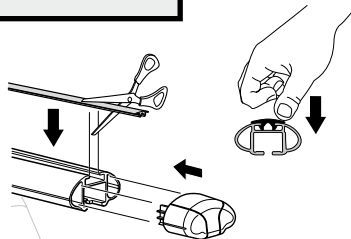
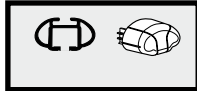
754 Rapid System
480R Rapid Traverse
(North America)



x4



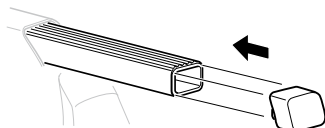
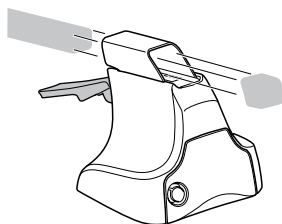
x4



x4

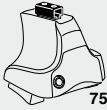


480 Traverse
(North America)

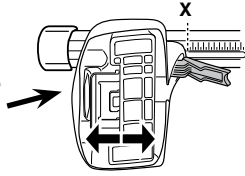


x4

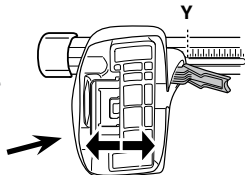
3



754 Rapid System



	X
ACURA TSX, 4-dr Sedan, *09-	43
HONDA Accord, 4-dr Sedan, 08-	42,5



	Y
ACURA TSX, 4-dr Sedan, *09-	37.5
HONDA Accord, 4-dr Sedan, 08-	37

3

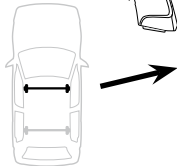


480R Rapid Traverse

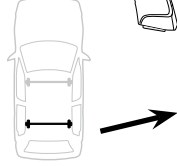


480 Traverse

(North America)

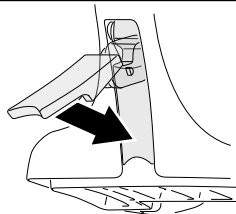


	X inch	X mm
ACURA TSX, 4-dr Sedan, *09-	42 1/2"	1081 mm
HONDA Accord, 4-dr Sedan, 08-	42 3/8"	1076 mm



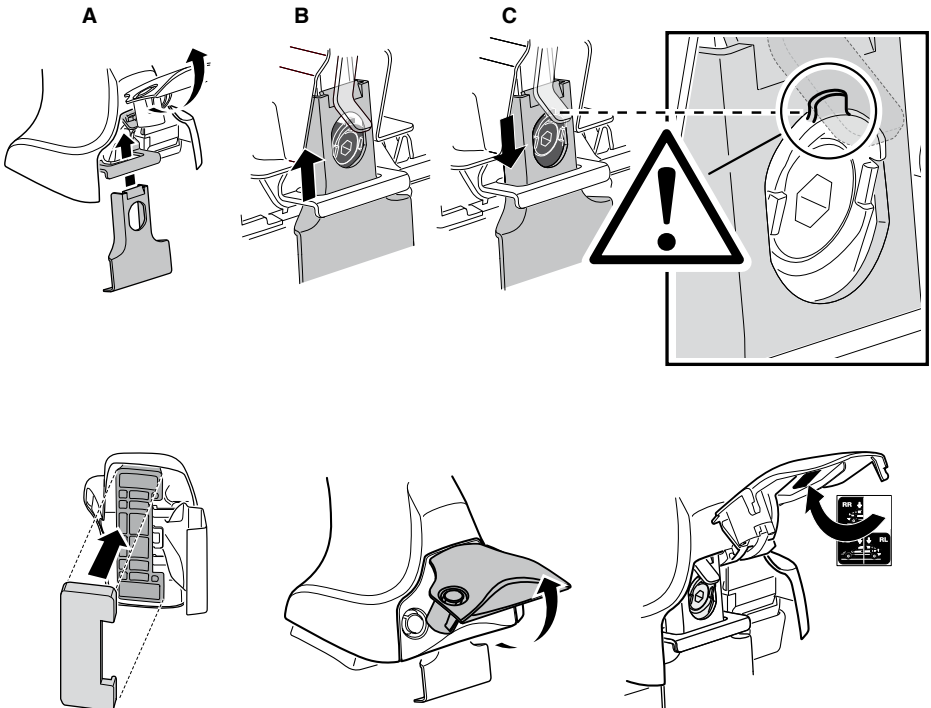
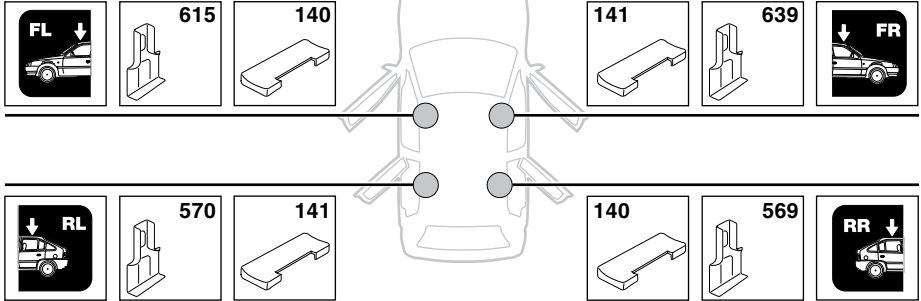
	Y inch	Y mm
ACURA TSX, 4-dr Sedan, *09-	40 1/4"	1022 mm
HONDA Accord, 4-dr Sedan, 08-	40 1/4"	1021 mm

4

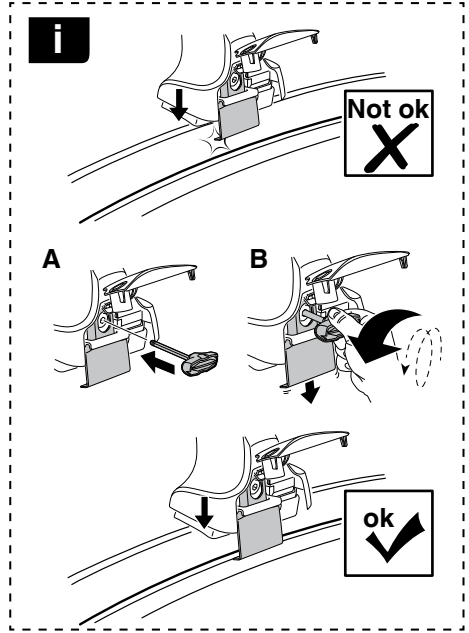
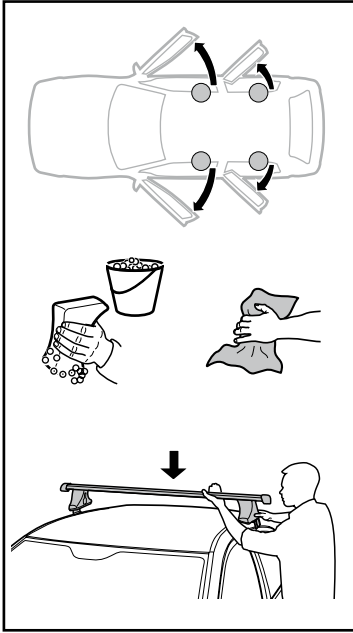


5

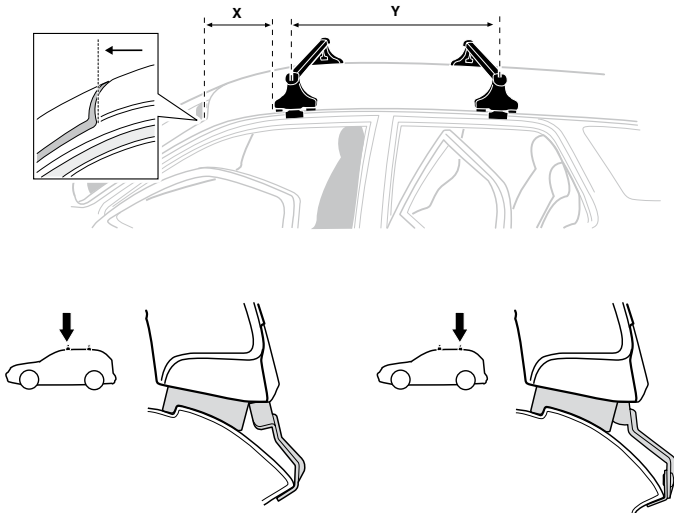
ACURA TSX, 4-dr Sedan, *09-
HONDA Accord, 4-dr Sedan, 08-



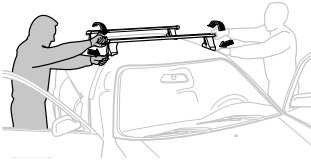
6



	X mm	Y mm	X inch	Y inch
ACURA TSX, 4-dr Sedan, *09-	254 mm	648 mm	10"	25 1/2"
HONDA Accord, 4-dr Sedan, 08-	250 mm	650 mm	9 7/8"	25 5/8"



7



GB/US Tighten alternately
D Die Schrauben abwechselnd anziehen
F Serrer alternativement chaque côté
NL Afwisselend aan de linker- en de rechterkant aandraaien
I Alternare il serraggio delle viti
E Apretar alternativamente
PT Aperte alternadamente
S Dra åt växelvis
FIN Kierrä vuorotellen
EST Pinguldage vaheldumisi
LAT Pievelciēt pamišus
LIT Užsukinėkite pakaitomis
PL Śruby dokręcaj naprzemiennie
RU Затягивайте попеременно

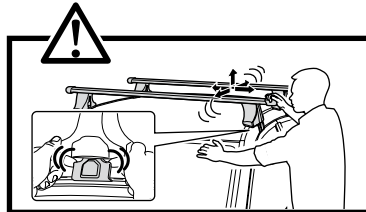
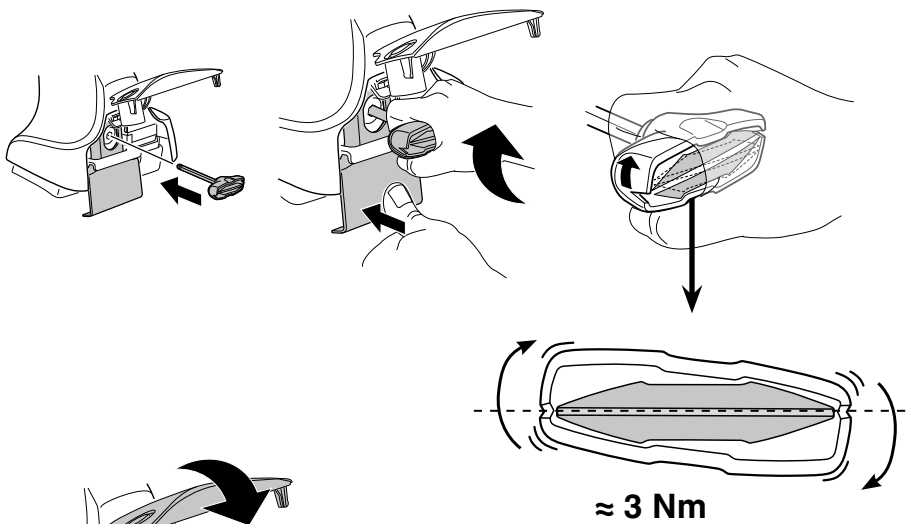
CZ Pokrétla bagazníka dokręcaj dokręcaj naprzemiennie.
SK Doťahujte striedavo
SLO Privijajte izmenično.
HR Naizmjenično zategnite
HU Egymástól függetlenül szorítandó
GR Σφιγγεται εναλλάξ
TR Dönüşümlü sıkın

中文 交替拧紧

한국어 번갈아 가며 조이십시오.

日本語 交互に締め付けてください。

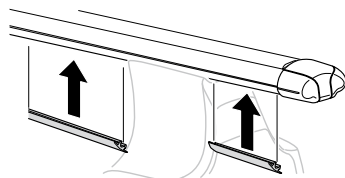
ไทย ชั้้นในแบบสลับ

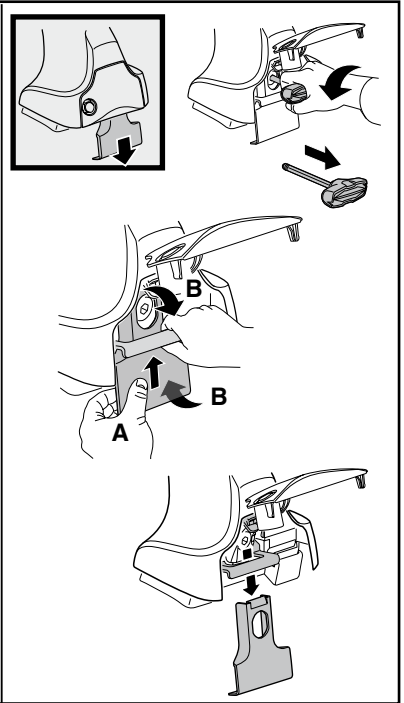
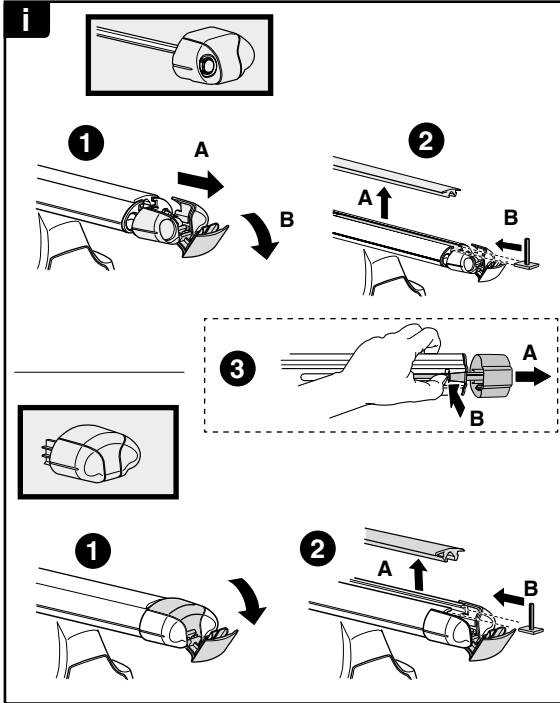


8

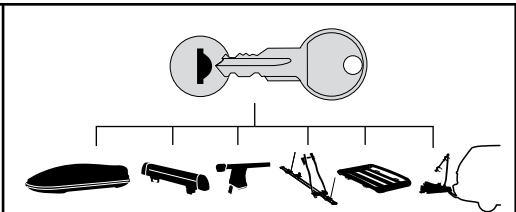


x1
17 mm





THULE
SWEDEN
**ONE
KEY
SYSTEM**



		(x4)
		(x6)
		(x8)
NA		(x10)
EUR		(x12)
ASIA		



WW ▶ Thule Sweden AB, Box 69, 330 33 Hillerstorp, SWEDEN
NA ▶ Thule Inc., 42 Silvermine Road, Seymour, Connecticut 06483, USA

info@thule.com
customer.service@thule.com

www.thule.com