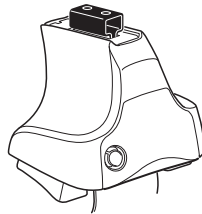


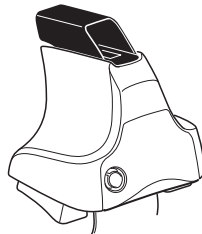
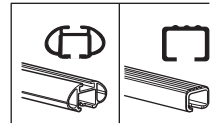
Kit 1597

VOLKSWAGEN Jetta, 4-dr Sedan (MK5), 05-10
VOLKSWAGEN GLI, 4-dr Sedan (MK5), *08-10

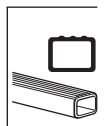
*North America



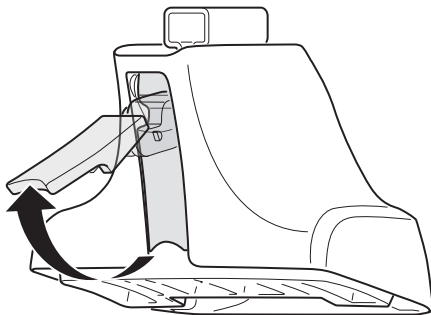
754 Rapid System
480R Rapid Traverse (North America)



480 Traverse (North America)



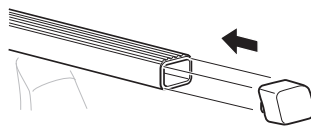
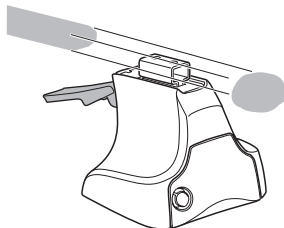
1



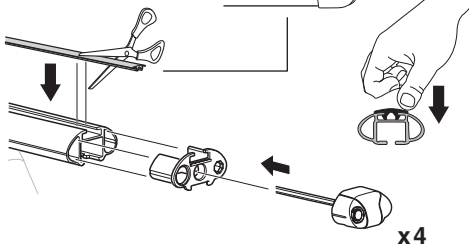
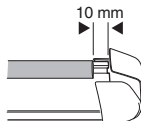
2



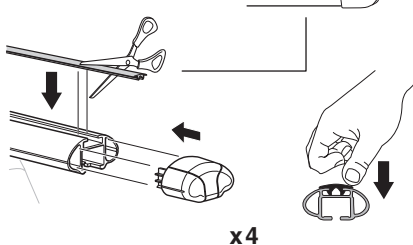
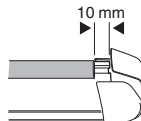
754 Rapid System
480R Rapid Traverse
(North America)



x4



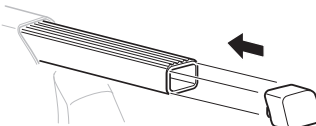
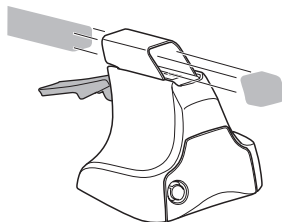
x4



x4

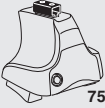


480 Traverse
(North America)

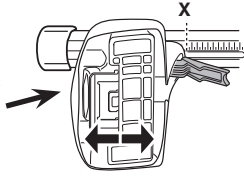


x4

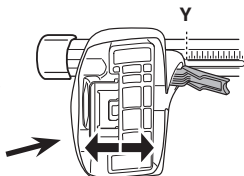
3



754 Rapid System



	X
VOLKSWAGEN Jetta , 4-dr Sedan (MK5), 05-10	38,5
VOLKSWAGEN GLI , 4-dr Sedan (MK5), *08-10	38,5



	Y
VOLKSWAGEN Jetta , 4-dr Sedan (MK5), 05-10	35
VOLKSWAGEN GLI , 4-dr Sedan (MK5), *08-10	35

3

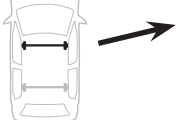


480R Rapid Traverse

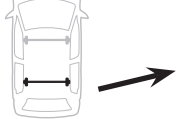


480 Traverse

(North America)

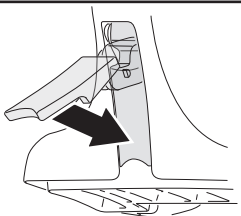


	X inch	X mm
VOLKSWAGEN Jetta , 4-dr Sedan (MK5), 05-10	40 3/4"	1036 mm
VOLKSWAGEN GLI , 4-dr Sedan (MK5), *08-10	40 3/4"	1036 mm



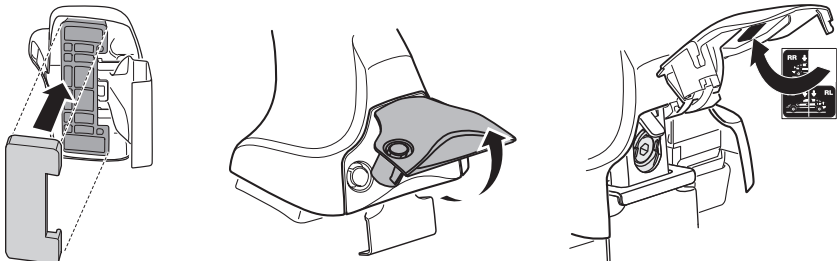
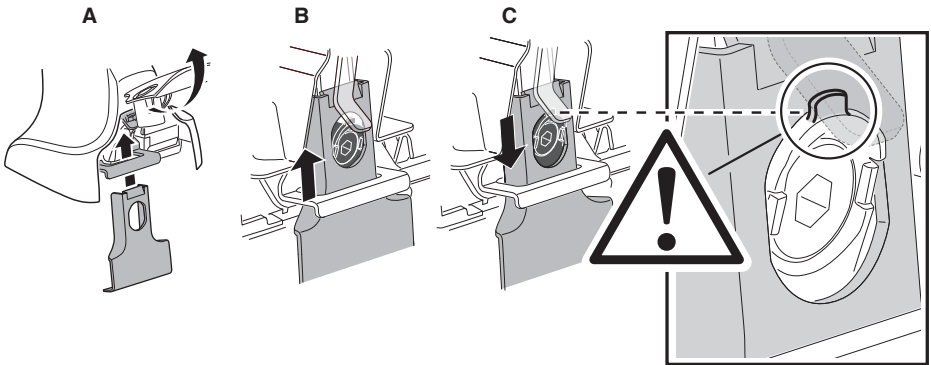
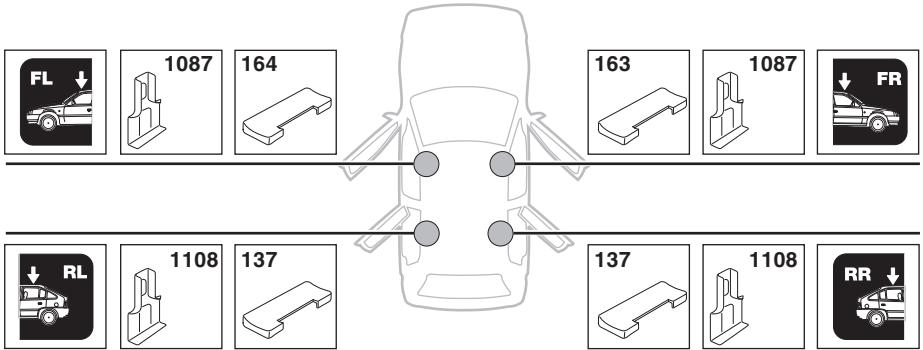
	Y inch	Y mm
VOLKSWAGEN Jetta , 4-dr Sedan (MK5), 05-10	39 3/8"	1001 mm
VOLKSWAGEN GLI , 4-dr Sedan (MK5), *08-10	39 3/8"	1001 mm

4

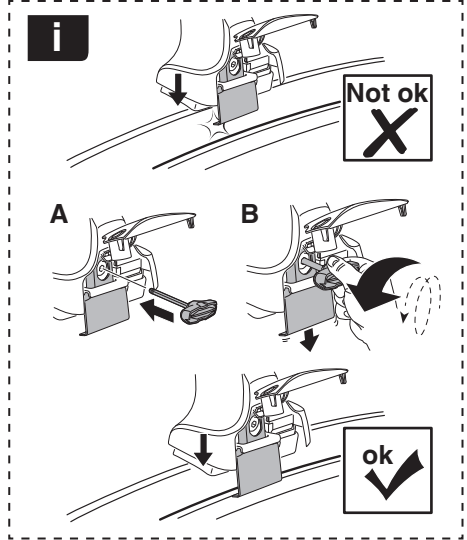
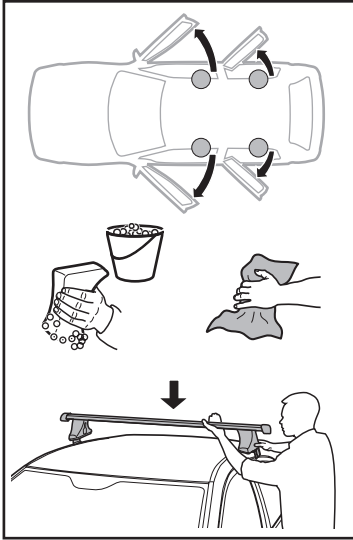


5

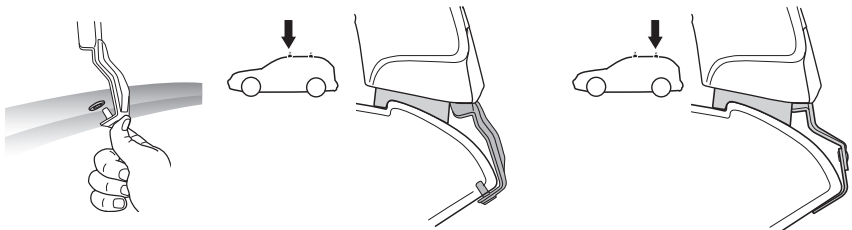
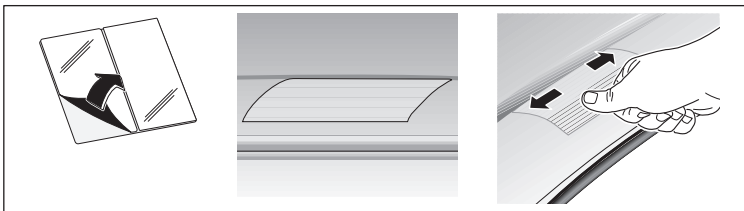
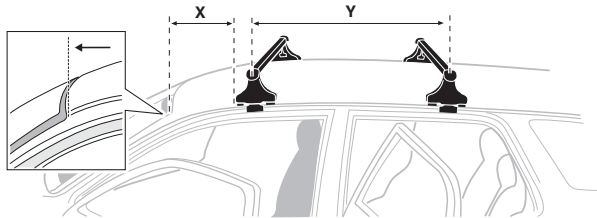
VOLKSWAGEN Jetta, 4-dr Sedan (MK5), 05-10
VOLKSWAGEN GLI, 4-dr Sedan (MK5), *08-10



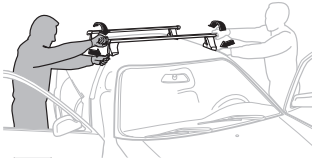
6



	X mm	Y mm	X inch	Y inch
VOLKSWAGEN Jetta, 4-dr Sedan (MK5), 05-10	320 mm	725 mm	12 5/8"	28 1/4"
VOLKSWAGEN GLI, 4-dr Sedan (MK5), *08-10	320 mm	725 mm	12 5/8"	28 1/4"



7



GB/US Tighten alternately
 D Die Schrauben abwechselnd anziehen
 F Serrer alternativement chaque côté
 NL Afwisselend aan de linker- en de rechterkant aandraaien
 I Alternare il serraggio delle viti
 E Apretar alternativamente
 PT Aperte alternadamente
 S Dra åt växelvis
 FIN Kierrä vuorotellen
 EST Pinguldage vaheldumisi
 LAT Pievelciēt pamīšus
 LIT Užsukinėkite pakaitomis
 PL Śruby dokręcaj naprzemiennie
 RU Затягивайте попеременно

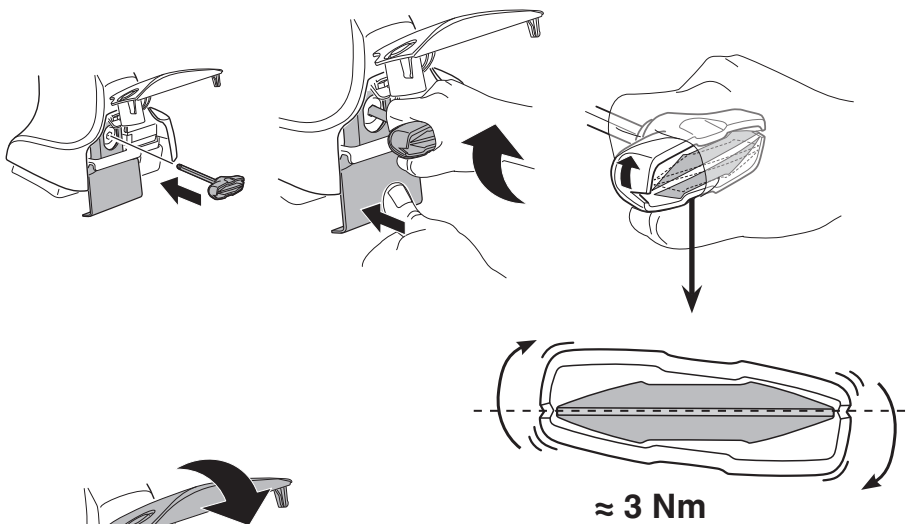
CZ Pokręťta bagażnika dokręcaj dokręcaj naprzemiennie.
 SK Dofahajte striedavo
 SLO Privijajte izmenično.
 HR Naizmjerno zategnite
 HU Egymástól függetlenül szorítandó
 GR Σφιγγείτε εναλλάξ
 TR Dönüşümlü sıkın

中文 交替拧紧

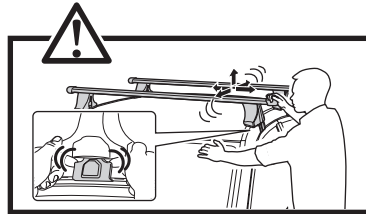
한국어 번갈아 가며 조이십시오.

日本語 交互に締め付けてください。

ไทย ชันในแบบสลับ



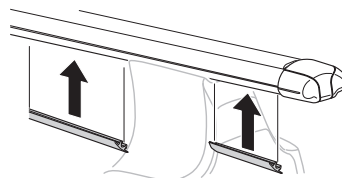
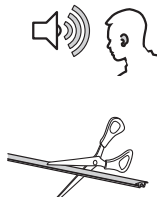
≈ 3 Nm

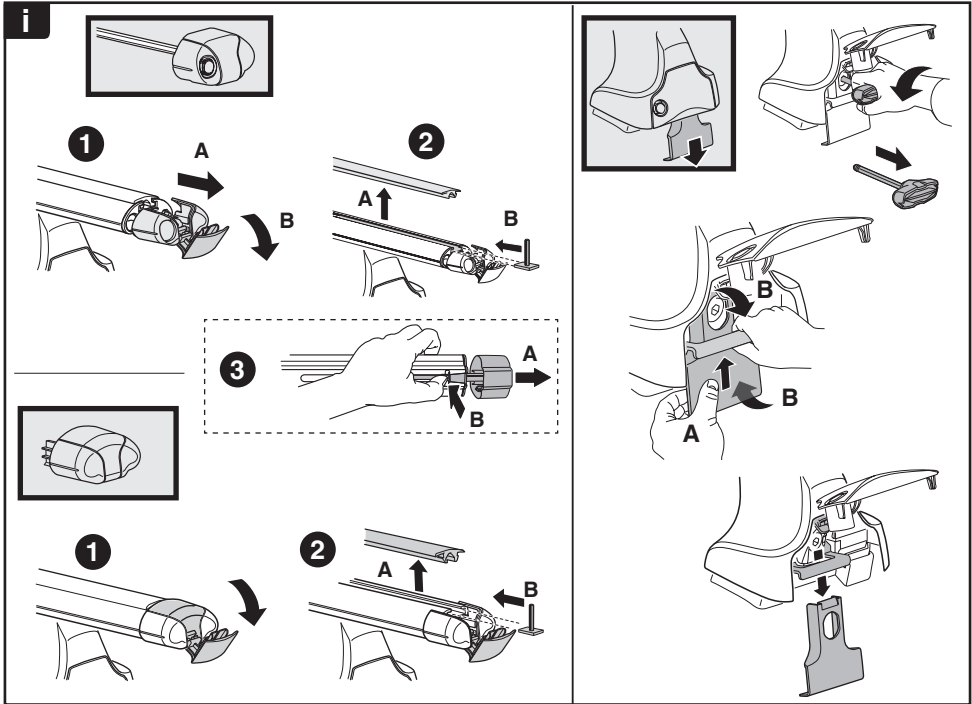
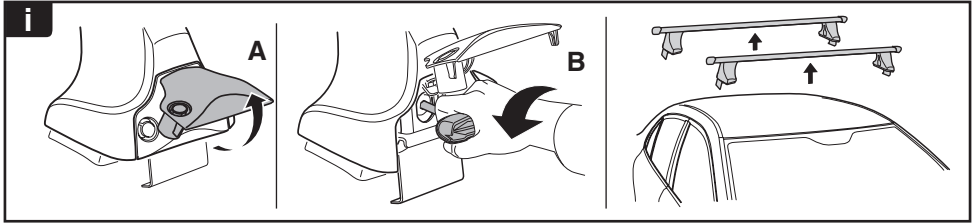


8

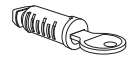
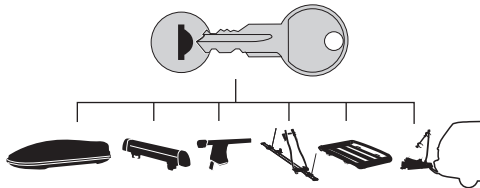


x1
17 mm





THULE
SWEDEN
**ONE
KEY
SYSTEM**



- 544** (x4)
- 596** (x6)
- 588** (x8)
- NA **510** (x10)
- EUR **452** (x12)
- ASIA

