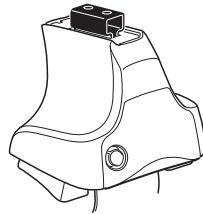
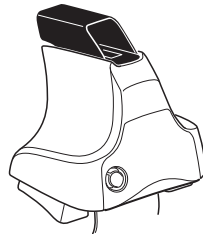
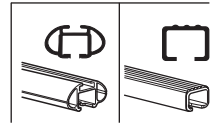


Kit 1708

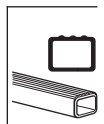
AUDI A3, 3-dr Hatchback, 12-
AUDI A3, 5-dr Hatchback, 12-



754 Rapid System
480R Rapid Traverse (North America)



480 Traverse (North America)

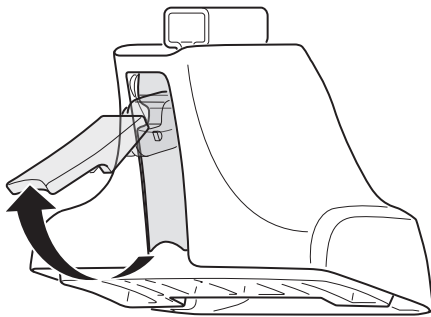


754 Rapid System
480R Rapid Traverse (North America)

480 Traverse (North America)

(North America)

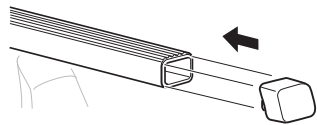
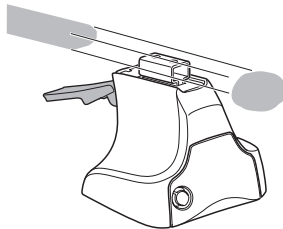
1



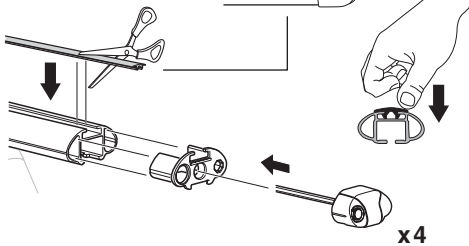
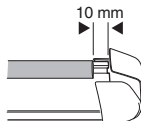
2



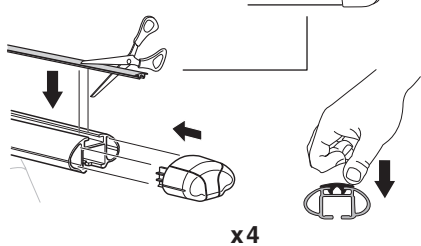
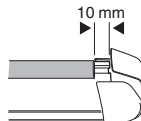
754 Rapid System
480R Rapid Traverse
(North America)



x4



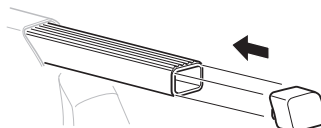
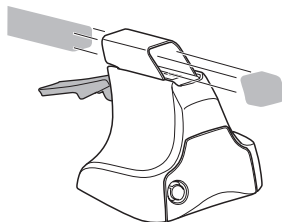
x4



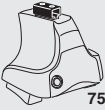
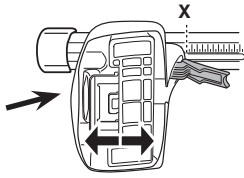
x4



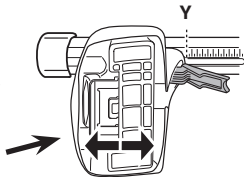
480 Traverse
(North America)



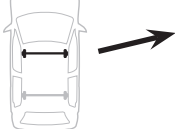
x4

3**754** Rapid System**X**

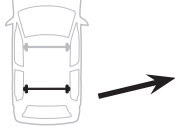
AUDI A3, 3-dr Hatchback, 12-	36,5
AUDI A3, 5-dr Hatchback, 12-	36,5

**Y**

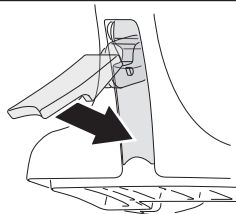
AUDI A3, 3-dr Hatchback, 12-	31
AUDI A3, 5-dr Hatchback, 12-	31

3**480R** Rapid Traverse**480** Traverse**(North America)****X inch** **X mm**

AUDI A3, 3-dr Hatchback, 12-	40"	1016 mm
AUDI A3, 5-dr Hatchback, 12-	40"	1016 mm

**Y inch** **Y mm**

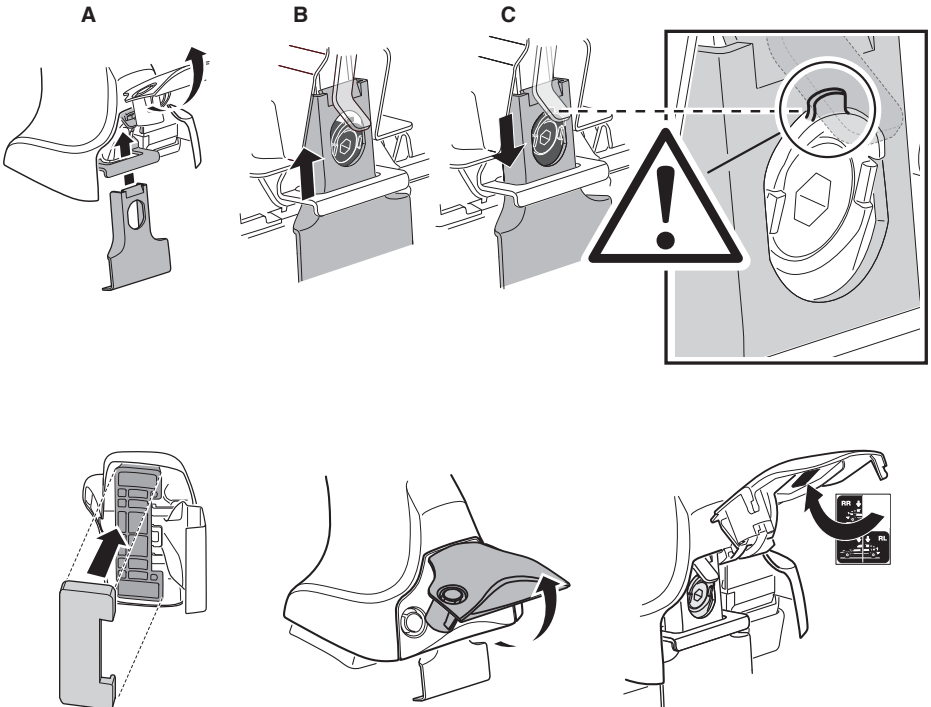
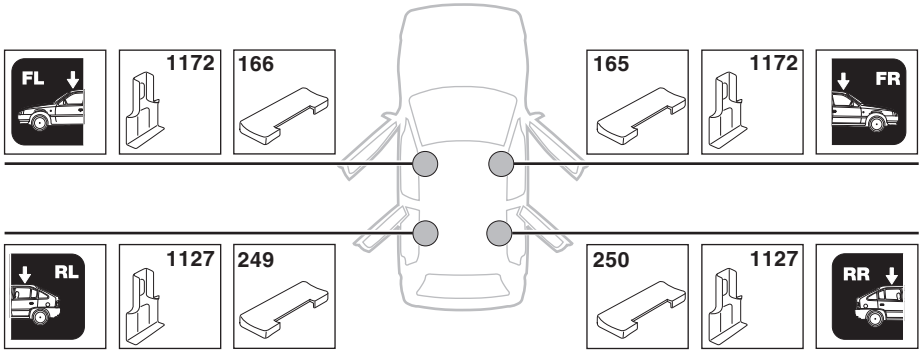
AUDI A3, 3-dr Hatchback, 12-	37 ⁷/₈"	961 mm
AUDI A3, 5-dr Hatchback, 12-	37 ⁷/₈"	961 mm

4

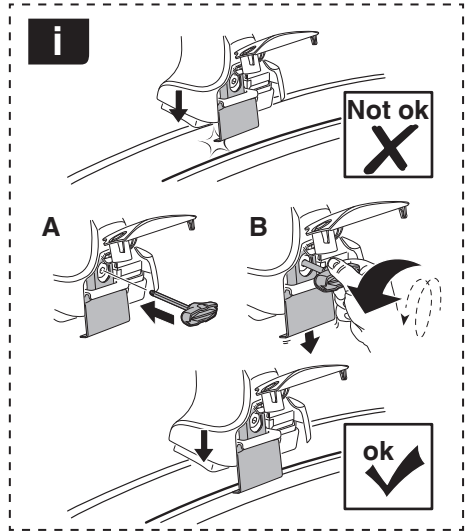
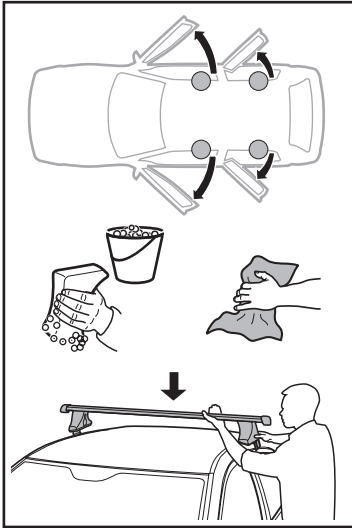
5

AUDI A3, 3-dr Hatchback, 12-

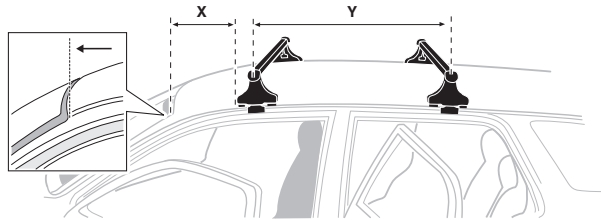
AUDI A3, 5-dr Hatchback, 12-



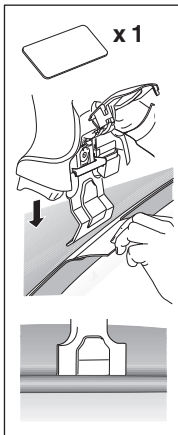
6



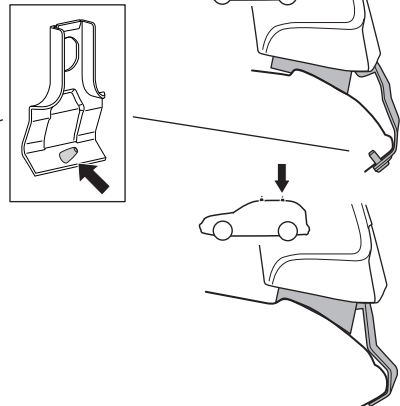
	X mm	Y mm	X inch	Y inch
AUDI A3, 3-dr Hatchback, 12-	250 mm	710 mm	9 7/8"	28"
AUDI A3, 5-dr Hatchback, 12-	250 mm	710 mm	9 7/8"	28"



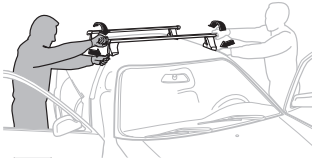
AUDI A3,
3-dr Hatchback, 12-



AUDI A3,
5-dr Hatchback, 12-



7



GB/US Tighten alternately
 D Die Schrauben abwechselnd anziehen
 F Serrer alternativement chaque côté
 NL Afwisselend aan de linker- en de rechterkant aandraaien
 I Alternare il serraggio delle viti
 E Apretar alternativamente
 PT Aperte alternadamente
 S Dra åt växelvis
 FIN Kierrä vuorotellen
 EST Pinguldage vaheldumisi
 LAT Pieļieciet pamišus
 LIT Užsukinėkite pakaitomis
 PL Śruby dokręcaj naprzemiennie
 RU Затягивайте попеременно

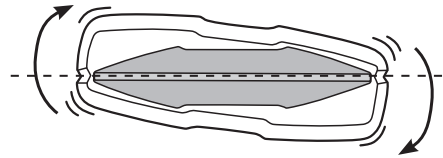
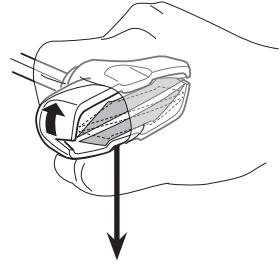
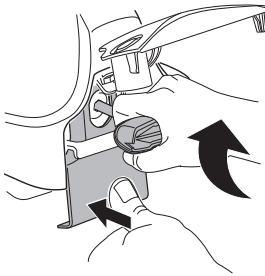
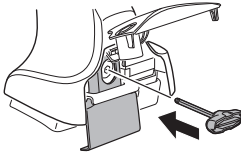
CZ Pokręťta bagażnika dokręcaj dokręcaj naprzemiennie.
 SK Dofahajte striedavo
 SLO Privijajte izmenično.
 HR Naizmjenočno zategnite
 HU Egymástól függetlenül szorítandó
 GR Σφιγίγες εναλλάξ
 TR Dönüşümlü sıkın

中文 交替拧紧

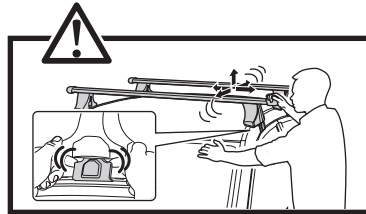
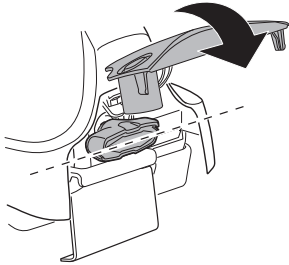
한국어 번갈아 가며 조이십시오.

日本語 交互に締め付けてください。

ไทย ชันในแบบสลับ



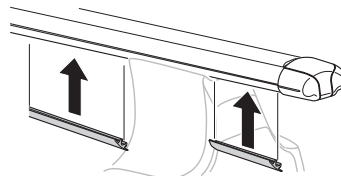
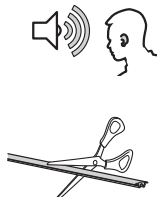
≈ 3 Nm

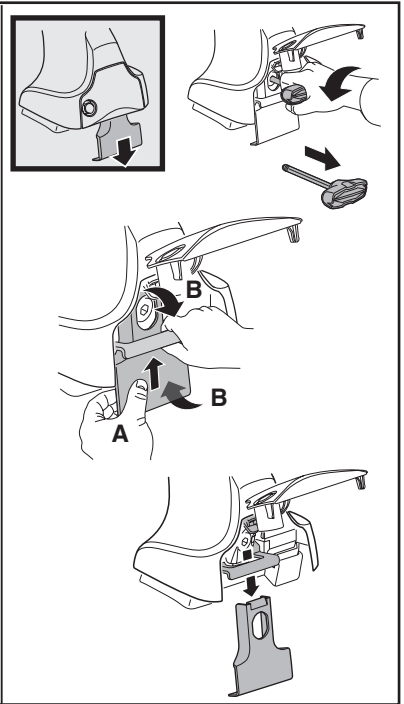
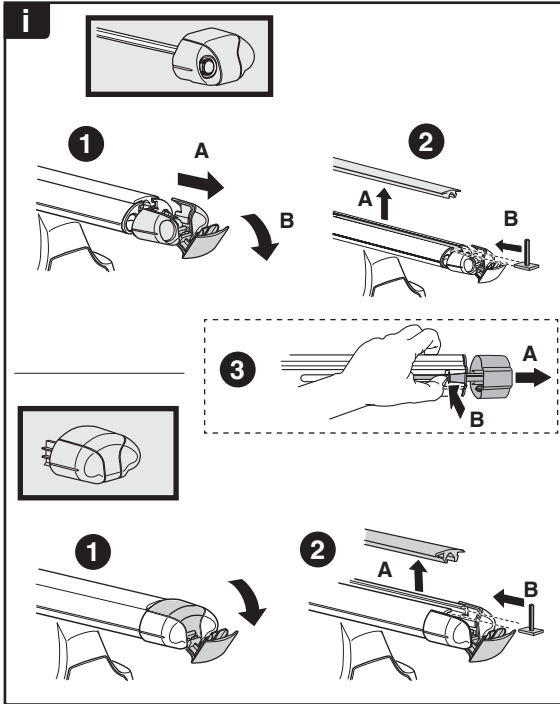
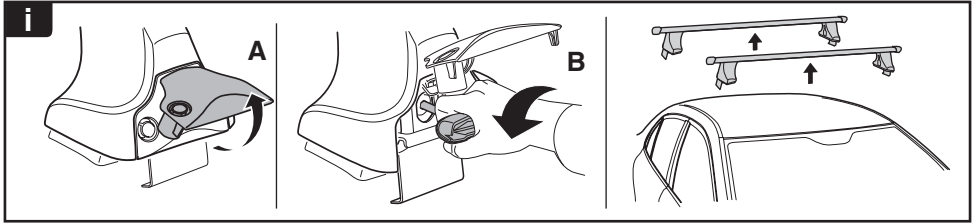


8



x1
17 mm





THULE
SWEDEN
**ONE
KEY
SYSTEM**



- 544** (x4)
 - 596** (x6)
 - 588** (x8)
 - 510** (x10)
 - 452** (x12)
- NA
EUR
ASIA



WW ▶ Thule Sweden AB, Box 69, 330 33 Hillerstorp, SWEDEN
NA ▶ Thule Inc., 42 Silvermine Road, Seymour, Connecticut 06483, USA

info@thule.com
 customer.service@thule.com

www.thule.com