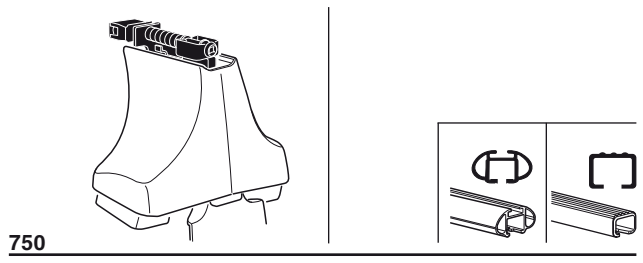
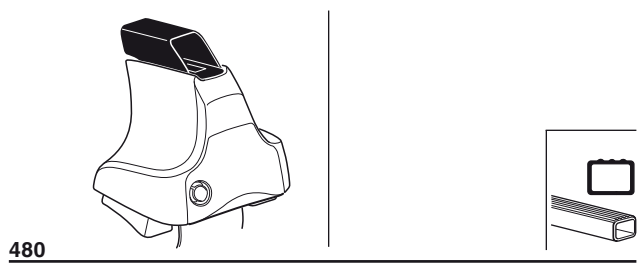
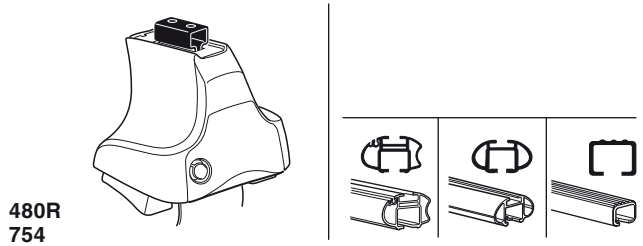


Kit 1555

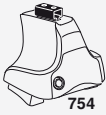
TOYOTA Tundra, 4-dr Double Cab, 07-
TOYOTA Tundra, 4-dr Crewmax Cab, 07-



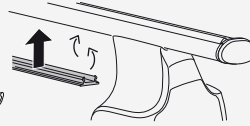
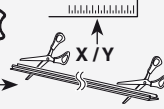
Kit



3



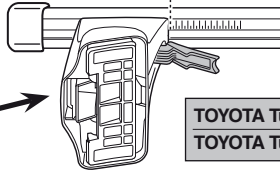
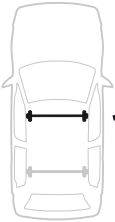
754



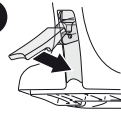
750



1

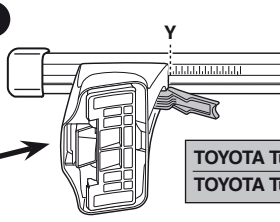


2

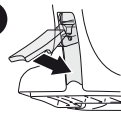


	X
TOYOTA Tundra, 4-dr Double Cab, 07-	61
TOYOTA Tundra, 4-dr Crewmax Cab, 07-	61

1



2



	Y
TOYOTA Tundra, 4-dr Double Cab, 07-	57,5
TOYOTA Tundra, 4-dr Crewmax Cab, 07-	57,5

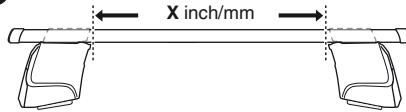


480R



480

1

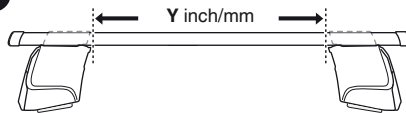


2



	X inch	X mm
TOYOTA Tundra, 4-dr Double Cab, 07-	49 ⁵ / ₈ "	1261 mm
TOYOTA Tundra, 4-dr Crewmax Cab, 07-	49 ⁵ / ₈ "	1261 mm

1



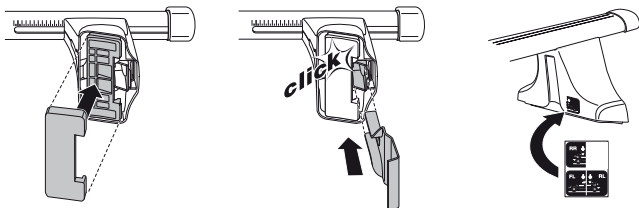
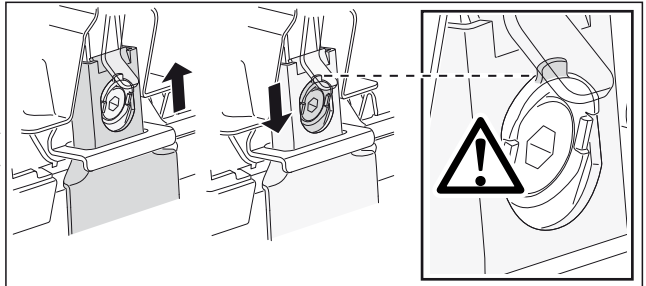
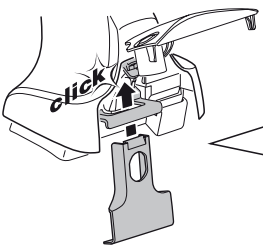
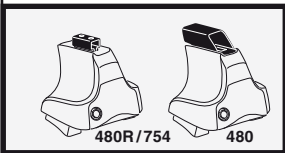
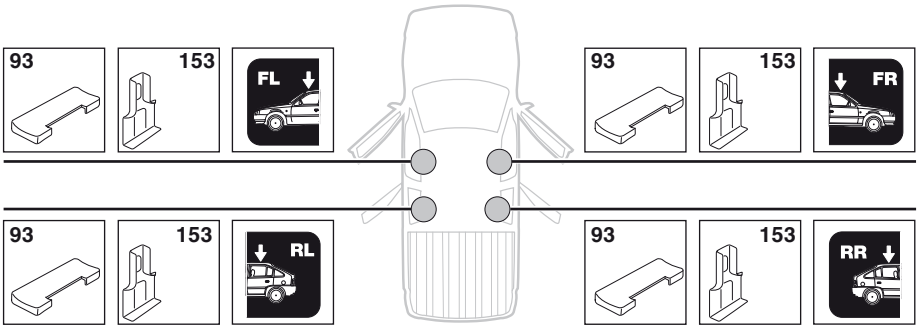
2



	Y inch	Y mm
TOYOTA Tundra, 4-dr Double Cab, 07-	48 ¹ / ₄ "	1226 mm
TOYOTA Tundra, 4-dr Crewmax Cab, 07-	48 ¹ / ₄ "	1226 mm

4

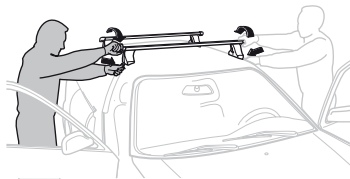
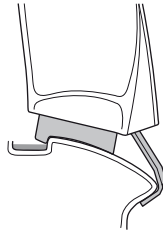
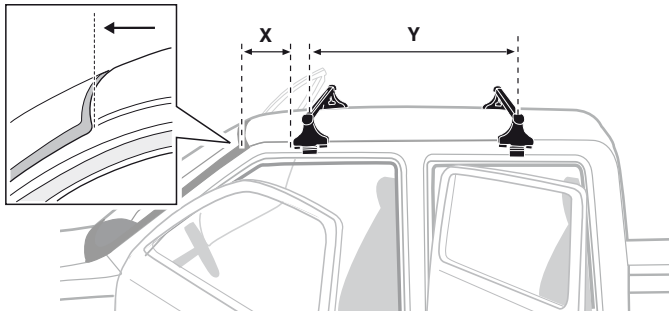
TOYOTA Tundra, 4-dr Double Cab, 07–
 TOYOTA Tundra, 4-dr Crewmax Cab, 07–



5



	X mm	Y mm	X inch	Y inch
TOYOTA Tundra, 4-dr Double Cab, 07-	380 mm	700 mm	15"	27 1/2"
TOYOTA Tundra, 4-dr Crewmax Cab, 07-	380 mm	700 mm	15"	27 1/2"



GB/US Tighten alternately

D Die Schrauben abwechselnd anziehen

F Serrer alternativement chaque côté

NL Afwisselend aan de linker- en de rechterkant aandraaien

I Alternare il serraggio delle viti

E Serrare alternativamente

PT Aperte alternadamente

S Dra åt växelvis

FIN Kierrä vuorotellen

EST Pinguldage vaheldumisi

LAT Pielvelciet pamīšus

LIT Užsukinėkite pakaitomis

PL Śruby dokręcaj naprzemiennie

RU Затягивайте попеременно

CZ Pokręťta bagażníka dokręcaj dokręcaj naprzemiennie.

SK Doťahujte striedavo

SLO Privijajte izmenično.

HR Naizmjenično zategnite

HU Egymástól függetlenül szorítandó

GR Σφίγγετε εναλλάξ

TR Dönüşümlü sıkın

中文 交替拧紧

한국어 번갈아 가며 조이십시오.

日本語 交互に締め付けてください。

ไทย ชั้้นในแบบสลับ

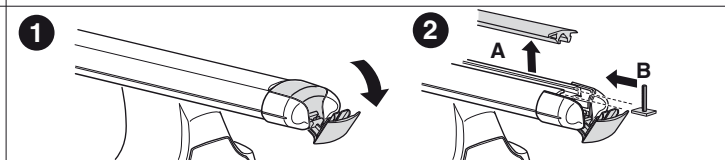
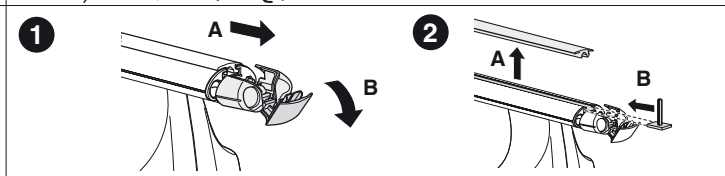
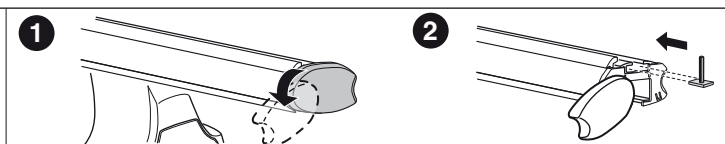
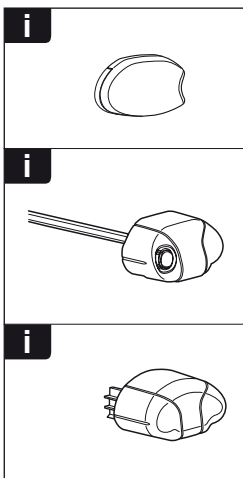
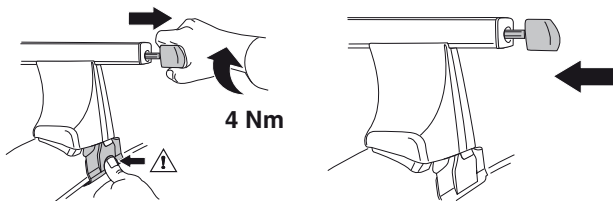
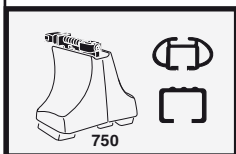
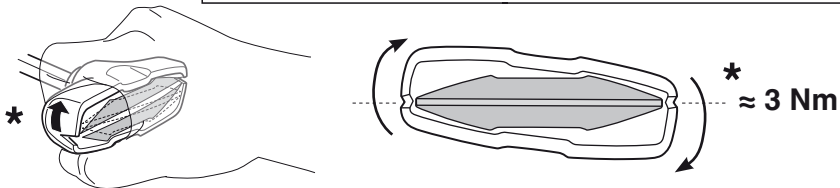
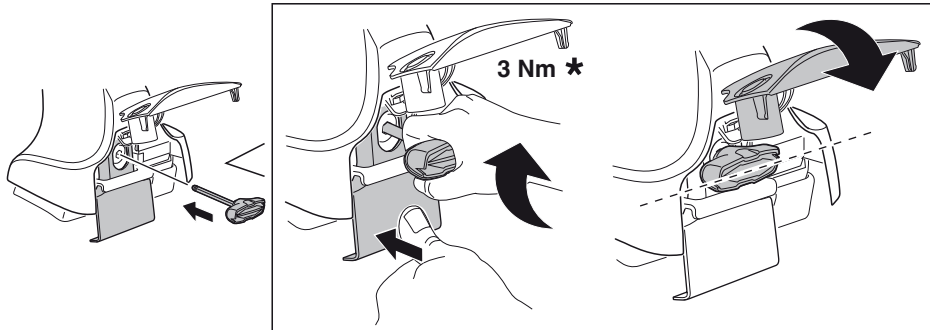
6

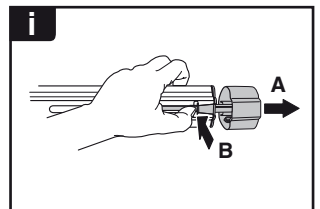
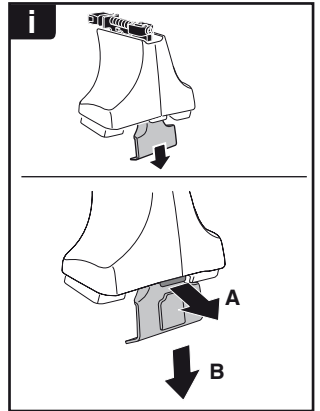


480R/754



480





THULE
SWEDEN
**ONE
KEY
SYSTEM**



- 544 (x4)
- 596 (x6)
- 588 (x8)
- NA 510 (x10)
- EUR 452 (x12)
- ASIA



WW ▶ Thule Sweden AB, Box 69, 330 33 Hillerstorp, SWEDEN
 NA ▶ Thule Inc., 42 Silvermine Road, Seymour, Connecticut 06483, USA

info@thule.com
 customer.service@thule.com

www.thule.com