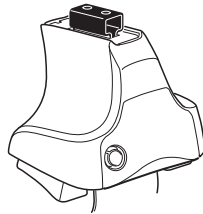
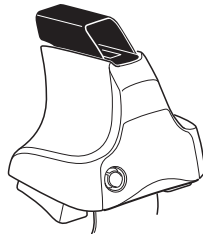
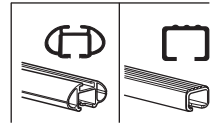


Kit 1650

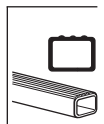
NISSAN Serena, 5-dr Van, 10-
SUZUKI Landy, 5-dr Van, 10-



754 Rapid System
480R Rapid Traverse (North America)



480 Traverse (North America)



xx kg
 xx lbs + 7 kg
 15,4 lbs =
Max.
50 kg

Max.
110 lbs

80 km/h 50 Mph 130 km/h 80 Mph
 40 km/h 25 Mph

km/h
 Mph

+ Kit XXXX

x1

x4
 754 Rapid System

x4
 480R Rapid Traverse (North America)

x4 x4

754 Rapid System
 480R Rapid Traverse (North America)

x1 x4 x4 x4

480 Traverse (North America)

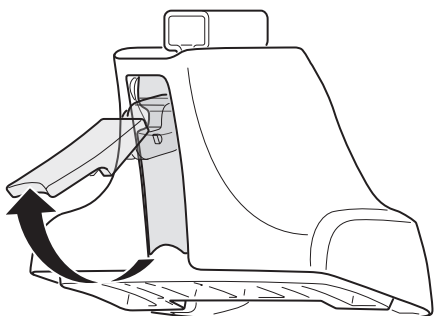
x2 x2 x2 x4 x4	x2 23 mm x2 23 mm x2 x4	x1 17 mm x2 23 mm x2 x4	<p>(North America)</p> x2 x2 x2 x2
----------------------------	--	--	---

1185 x 4

377 x 4

x1

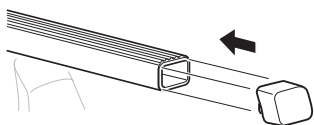
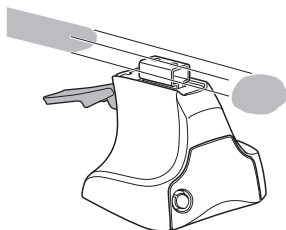
1



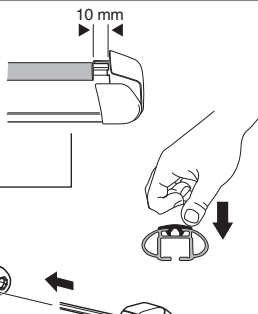
2



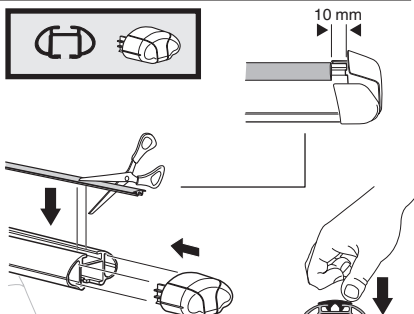
754 Rapid System
480R Rapid Traverse
(North America)



x4



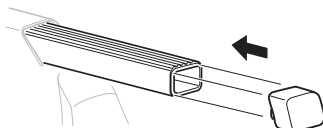
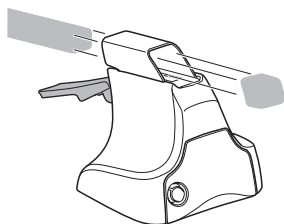
x4



x4

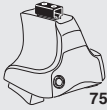


480 Traverse
(North America)

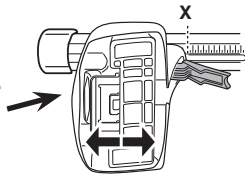


x4

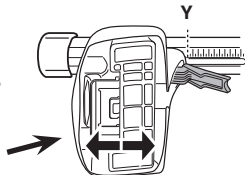
3



754 Rapid System



	X
NISSAN Serena, 5-dr Van, 10-	42
SUZUKI Landy, 5-dr Van, 10-	42



	Y
NISSAN Serena, 5-dr Van, 10-	42,5
SUZUKI Landy, 5-dr Van, 10-	42,5

3

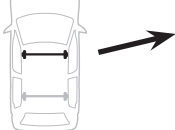


480R Rapid Traverse

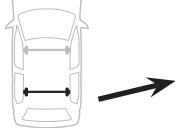
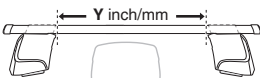


480 Traverse

(North America)

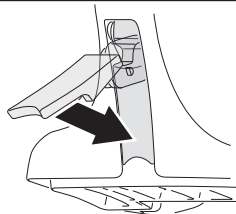


	X inch	X mm
NISSAN Serena, 5-dr Van, 10-	42 1/8"	1071 mm
SUZUKI Landy, 5-dr Van, 10-	42 1/8"	1071 mm



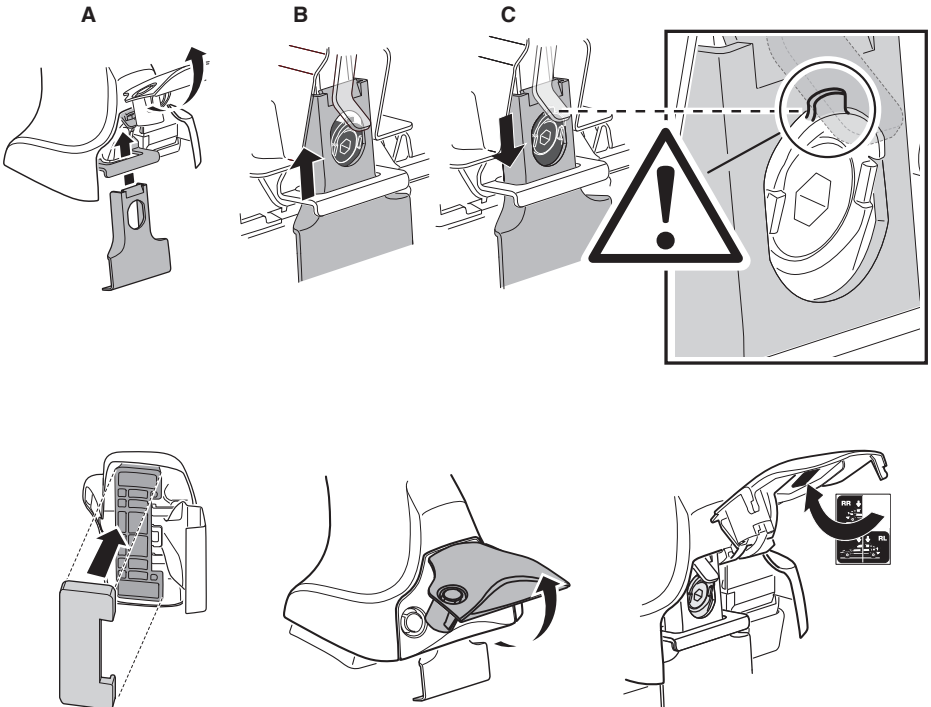
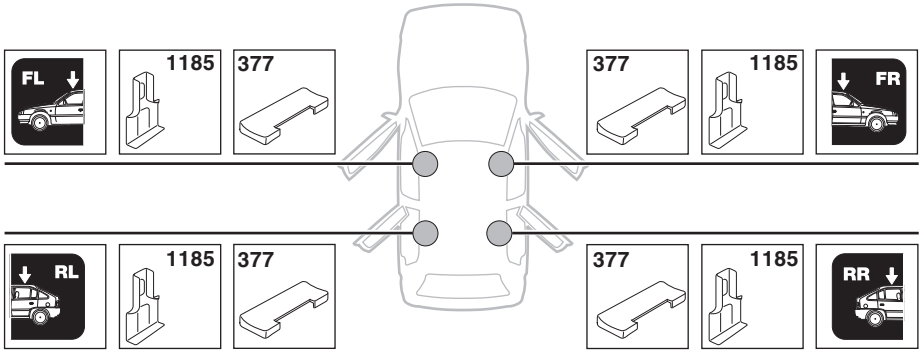
	Y inch	Y mm
NISSAN Serena, 5-dr Van, 10-	42 3/8"	1076 mm
SUZUKI Landy, 5-dr Van, 10-	42 3/8"	1076 mm

4

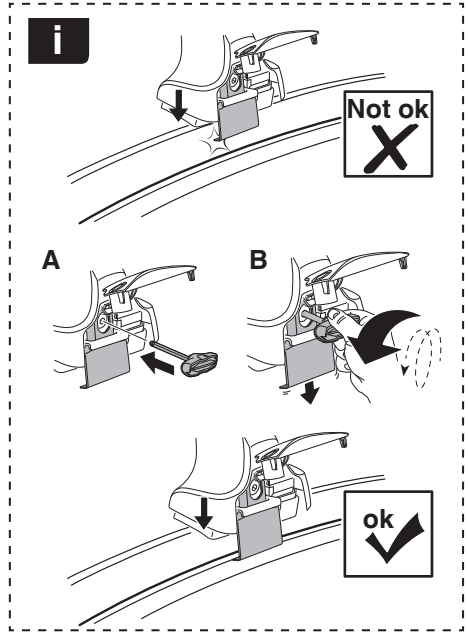
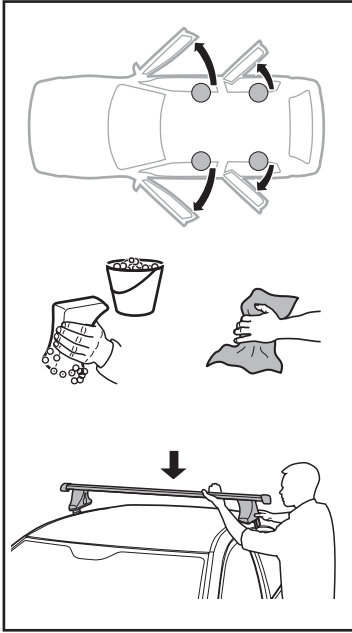


5

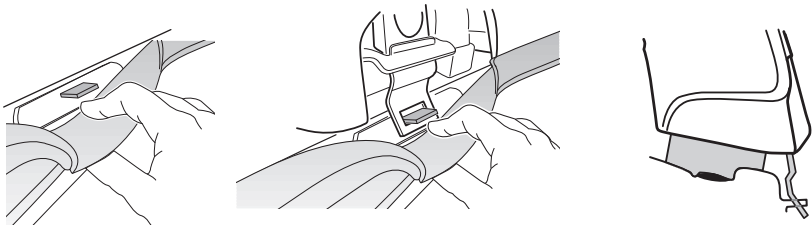
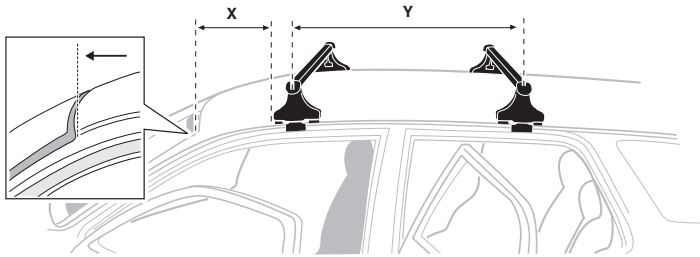
NISSAN Serena, 5-dr Van, 10-
SUZUKI Landy, 5-dr Van, 10-



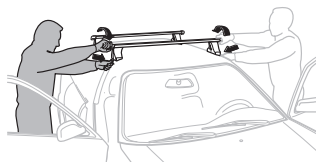
6



	X mm	Y mm	X inch	Y inch
NISSAN Serena, 5-dr Van, 10-	760 mm	685 mm	30"	27"
SUZUKI Landy, 5-dr Van, 10-	760 mm	685 mm	30"	27"



7



GB/US Tighten alternately
 D Die Schrauben abwechselnd anziehen
 F Serrer alternativement chaque côté
 NL Afwisselend aan de linker- en de rechterkant aandraaien
 I Alternare il serraggio delle viti
 E Apretar alternativamente
 PT Aperte alternadamente
 S Dra åt växelvis
 FIN Kierrä vuorotellen
 EST Pinguldage vaheldumisi
 LAT Pieļieciet pamišus
 LIT Užsukinėkite pakaitomis
 PL Śruby dokręcaj naprzemiennie
 RU Затягивайте попеременно

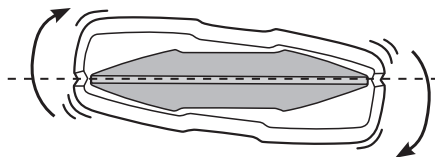
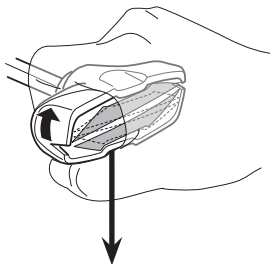
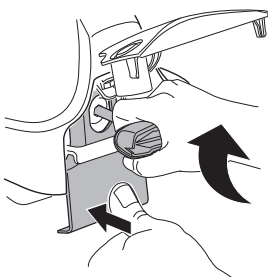
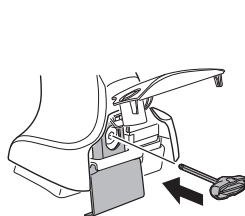
CZ Pokręťta bagażnika dokręcaj dokręcaj naprzemiennie.
 SK Dofahajte striedavo
 SLO Privijajte izmenično.
 HR Naizmjerno zategnite
 HU Egymástól függetlenül szorítandó
 GR Σφιγγείτε εναλλάξ
 TR Dönüşümlü sıkın

中文 交替拧紧

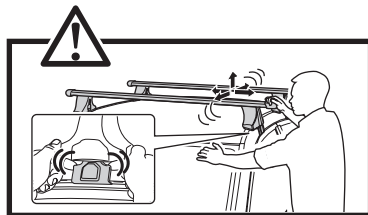
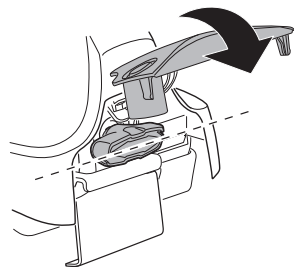
한국어 번갈아 가며 조이십시오.

日本語 交互に締め付けてください。

ไทย ชันในแบบสลับ



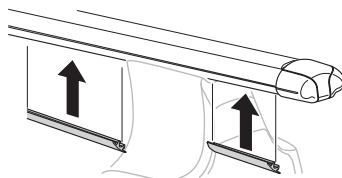
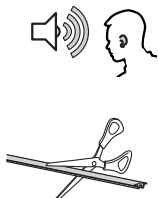
≈ 3 Nm

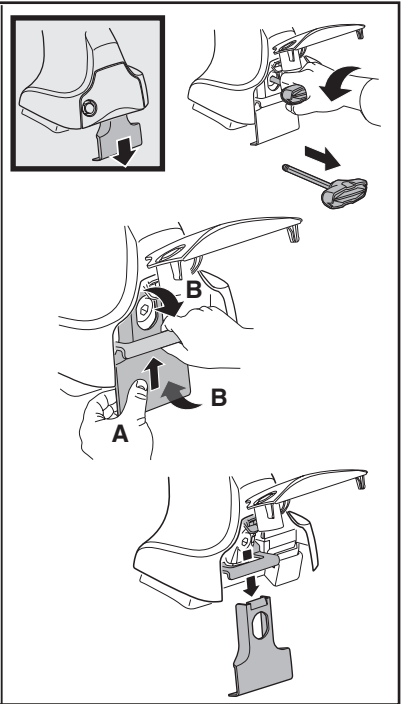
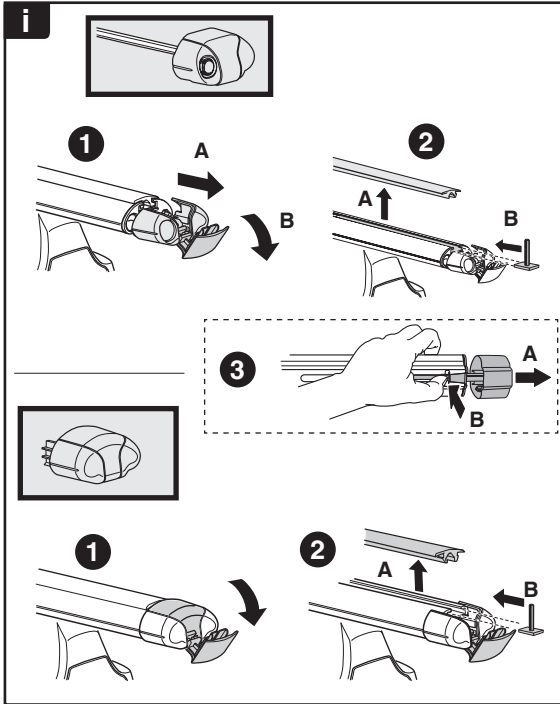
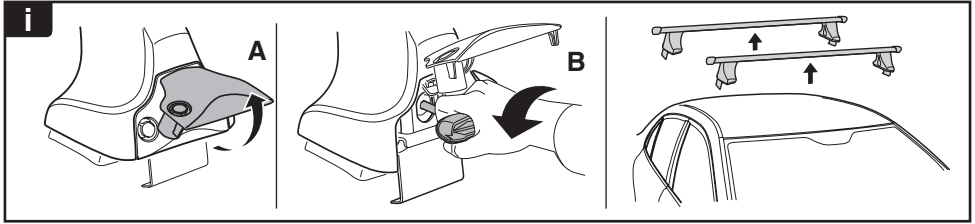


8

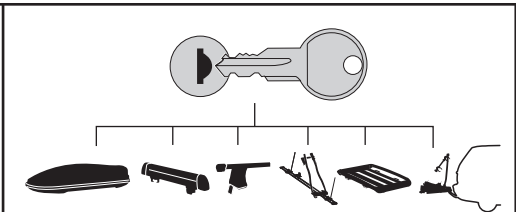


x1
17 mm

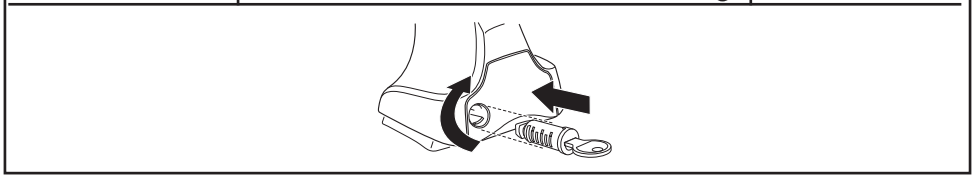




THULE
SWEDEN
**ONE
KEY
SYSTEM**



- 544** (x4)
 - 596** (x6)
 - 588** (x8)
 - 510** (x10)
 - 452** (x12)
- NA
EUR
ASIA



WW ▶ Thule Sweden AB, Box 69, 330 33 Hillerstorp, SWEDEN
NA ▶ Thule Inc., 42 Silvermine Road, Seymour, Connecticut 06483, USA

info@thule.com
 customer.service@thule.com

www.thule.com