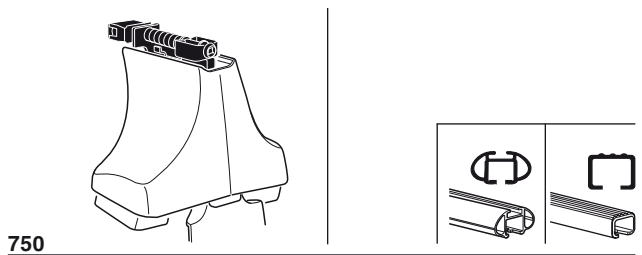
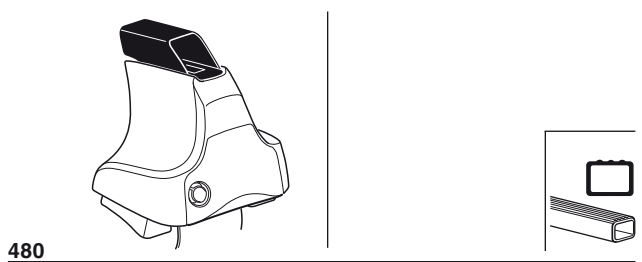
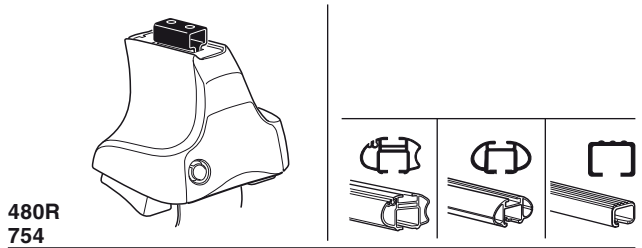


# Kit 1504

MERCEDES CLC, 2-dr Coupé, 08-



**Max. 40 kg**  
**Max. 88 lbs**

x1

x4

x4

x4

x4

**480R/754**

---

x1

x4

x4

x4

**480**

---

x1

x4

x4

**750**

x2	x2	x2	x2	x2
x2	x2	x2	x2	x2
x2	x2	x2	x2	x2
x4	x4	x4	x4	x4

x2

x2

x2

x1

x1

x1

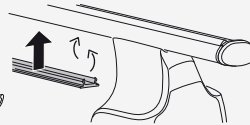
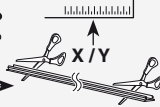
**Kit**



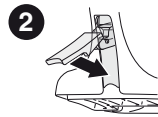
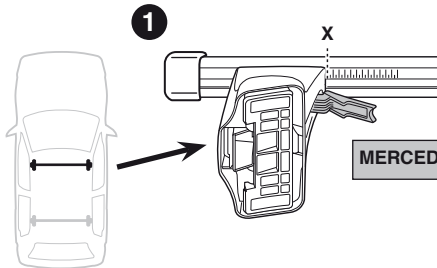
**3**



754

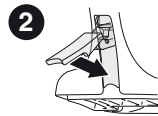
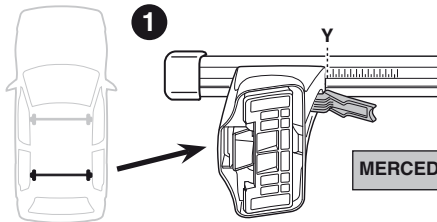


750



**MERCEDES CLC, 2-dr Coupé, 08-**

<b>X</b>
<b>31,5</b>



**MERCEDES CLC, 2-dr Coupé, 08-**

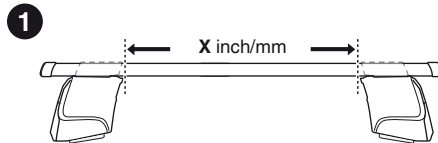
<b>Y</b>
<b>29,5</b>



480R

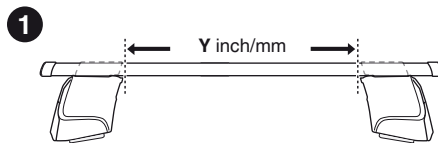


480



**MERCEDES CLC, 2-dr Coupé, 08-**

<b>X inch</b>	<b>X mm</b>
<b>38 "</b>	<b>966 mm</b>

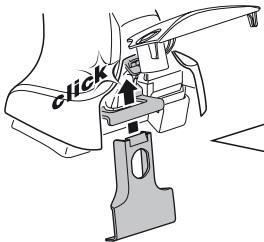
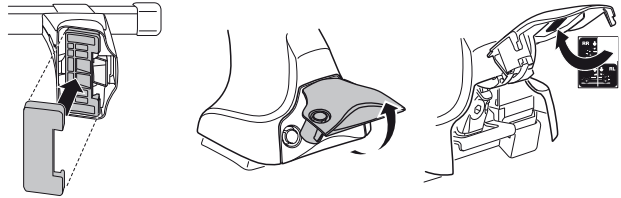
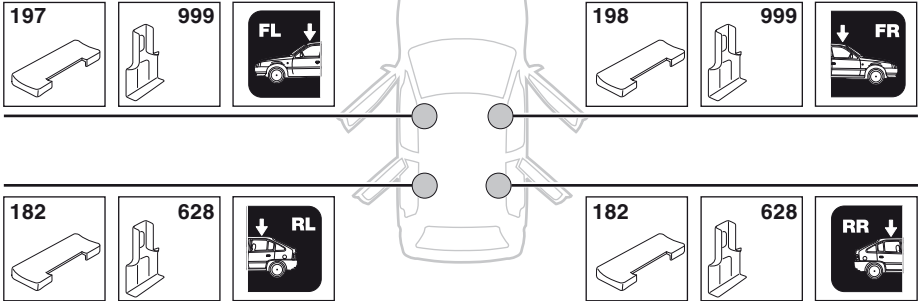


**MERCEDES CLC, 2-dr Coupé, 08-**

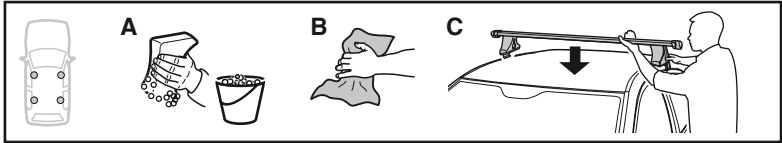
<b>Y inch</b>	<b>Y mm</b>
<b>37 1/4 "</b>	<b>946 mm</b>

4

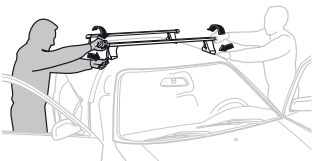
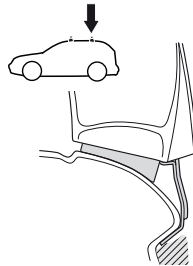
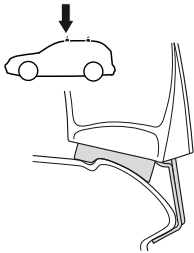
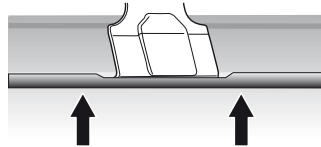
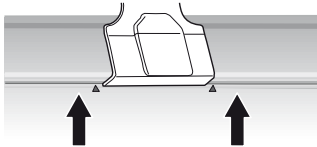
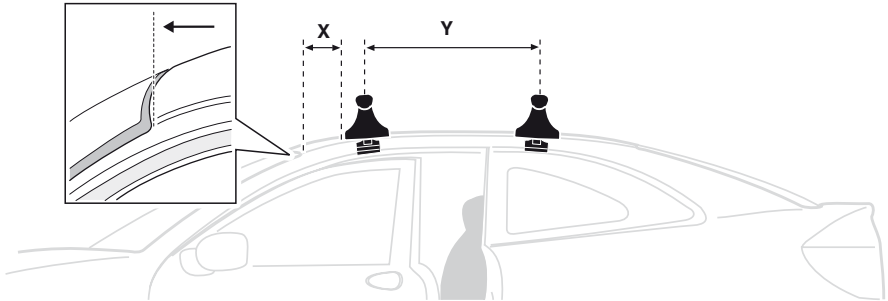
MERCEDES CLC, 2-dr Coupé, 08-



5



	X mm	Y mm	X inch	Y inch
<b>MERCEDES CLC, 2-dr Coupé, 08-</b>	<b>170 mm</b>	<b>650 mm</b>	<b>6 3/4"</b>	<b>25 5/8"</b>



- GB/US** Tighten alternately  
**D** Die Schrauben abwechselnd anziehen  
**F** Serrer alternativement chaque côté  
**NL** Afwisselend aan de linker- en de rechterkant aandraaien  
**I** Alternare il serraggio delle viti  
**E** Apretar alternativamente  
**PT** Aperte alternadamente  
**S** Dra åt växelsvis  
**FIN** Kierrä vuorotellen  
**EST** Pinguldage vaheldumisi  
**LAT** Pievelciēt pamišus  
**LIT** Užsukinėkite pakaitomis  
**PL** Śruby dokręcaj naprzemiennie  
**RU** Затягивайте попеременно

- CZ** Pokręťta багаžnika dokręcaj dokręcaj naprzemiennie.  
**SK** Dofahujte striedavo  
**SLO** Privijajte izmenično.  
**HR** Naizmjenično zategnite  
**HU** Egymástól függetlenül szorítandó  
**GR** Σφιγγετε εναλλάξ  
**TR** Dönüşümlü sıkın  
**中文** 交替拧紧  
**한국어** 번갈아 가며 조이십시오.  
**日本語** 交互に締め付けてください。  
**ไทย** ชับในแบบสลับ

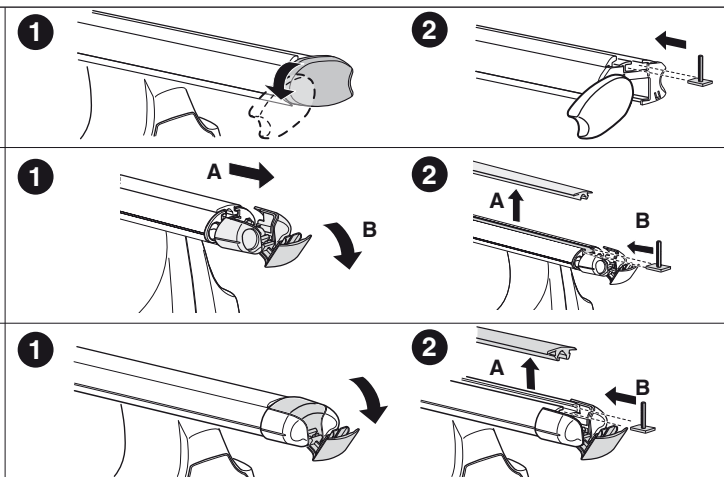
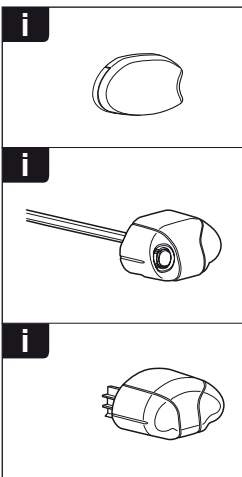
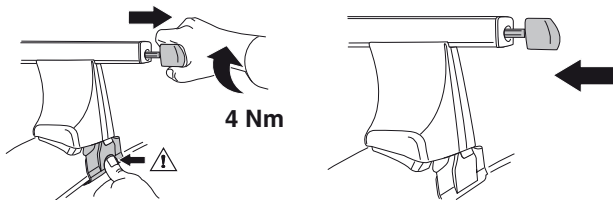
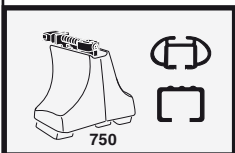
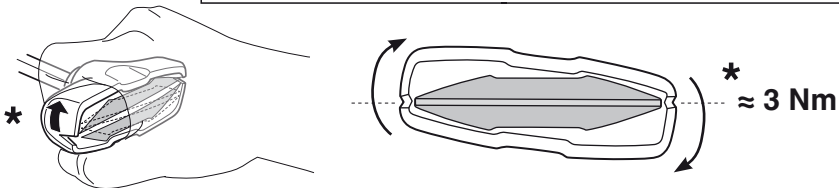
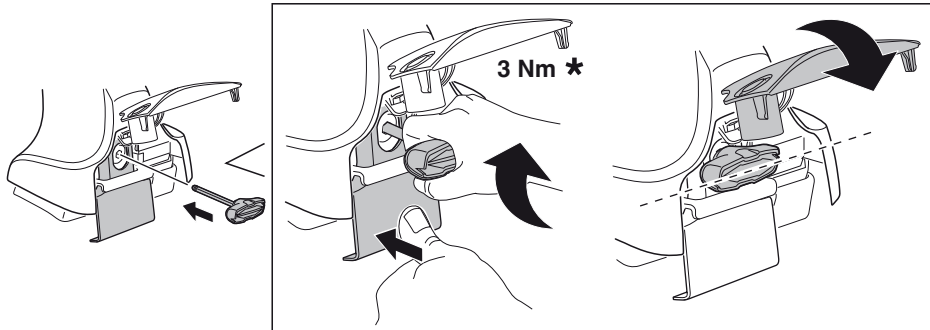
6

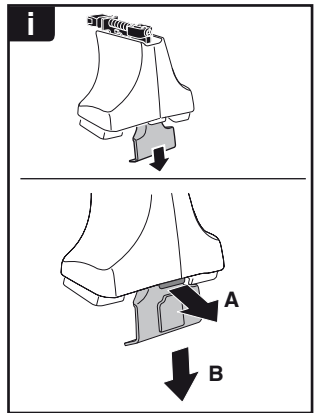
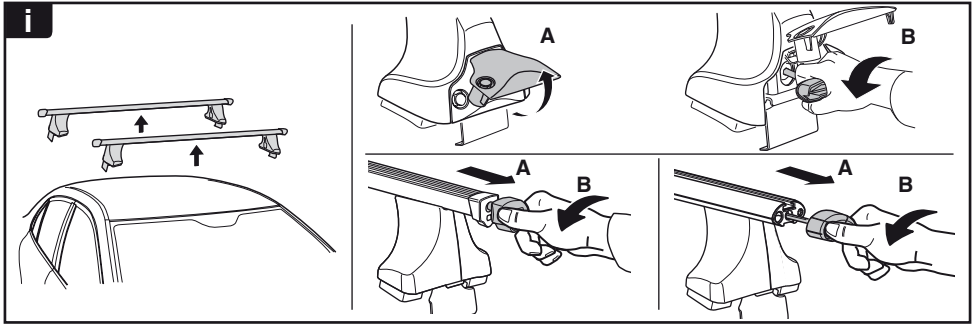


480R/754



480





**THULE**  
SWEDEN  
**ONE  
KEY  
SYSTEM**



- 544 (x4)
- 596 (x6)
- 588 (x8)
- NA 510 (x10)
- EUR 452 (x12)
- ASIA



WW ▶ Thule Sweden AB, Box 69, 330 33 Hillerstorp, SWEDEN  
NA ▶ Thule Inc., 42 Silvermine Road, Seymour, Connecticut 06483, USA

info@thule.com  
customer.service@thule.com

www.thule.com