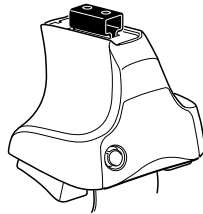


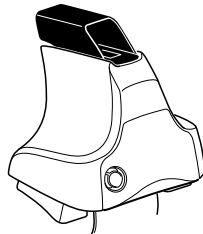
Kit 1539

DODGE Avenger, 4-dr Sedan, *07-

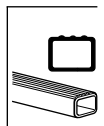
***North America**



754 Rapid System
480R Rapid Traverse (North America)



480 Traverse (North America)



xx kg
 xx lbs
 + 7 kg
 15,4 lbs = **Max. 50 kg**
Max. 110 lbs

80 km/h 50 Mph
 130 km/h 80 Mph
 40 km/h 25 Mph
km/h Mph

THULE
 + **Instructions Kit XXXX**

x1
 x1
 x4
 x4
 x4

754 Rapid System
480R Rapid Traverse (North America)

x1
 x4
 x4
 x4

480 Traverse (North America)

(North America)

x2
 x2
 x2
 x2
 x2
 x2
 x2
 x2
 x2
 x2
 x2
 x2
 x2
 x2
 x2

733 x2
1020 x2
111 x2
170 x2
 x1

1



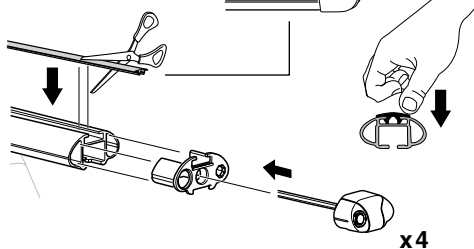
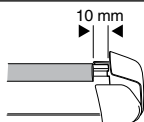
2



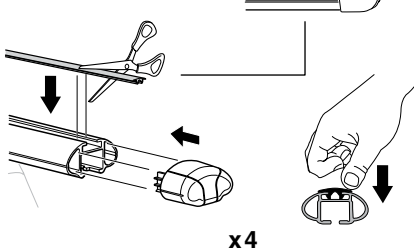
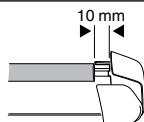
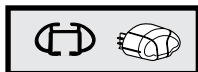
754 Rapid System
480R Rapid Traverse
(North America)



x4



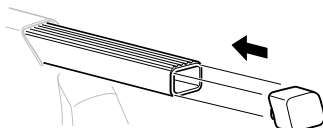
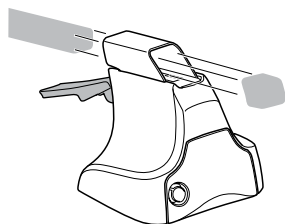
x4



x4



480 Traverse
(North America)

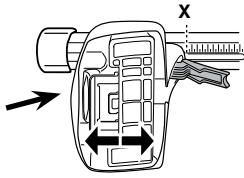


x4

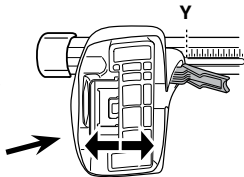
3



754 Rapid System

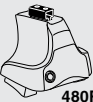


	X
DODGE Avenger, 4-dr Sedan, *07-	37



	Y
DODGE Avenger, 4-dr Sedan, *07-	43,5

3



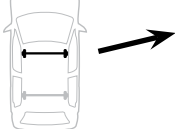
480R Rapid Traverse



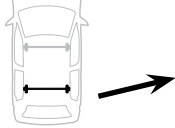
480 Traverse



(North America)



	X inch	X mm
DODGE Avenger, 4-dr Sedan, *07-	44"	1120 mm



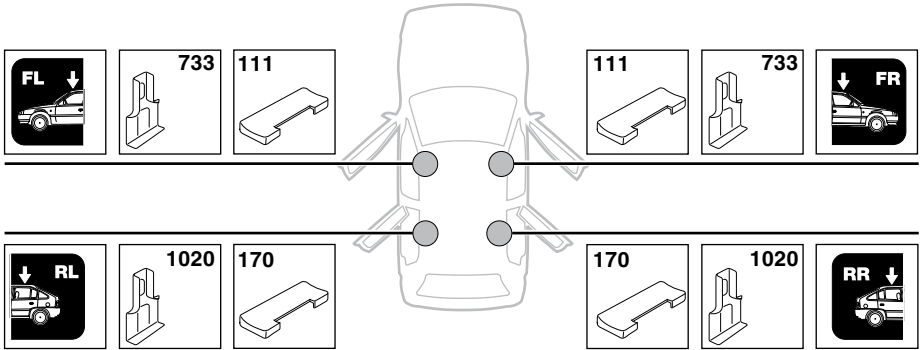
	Y inch	Y mm
DODGE Avenger, 4-dr Sedan, *07-	42 3/4"	1085 mm

4

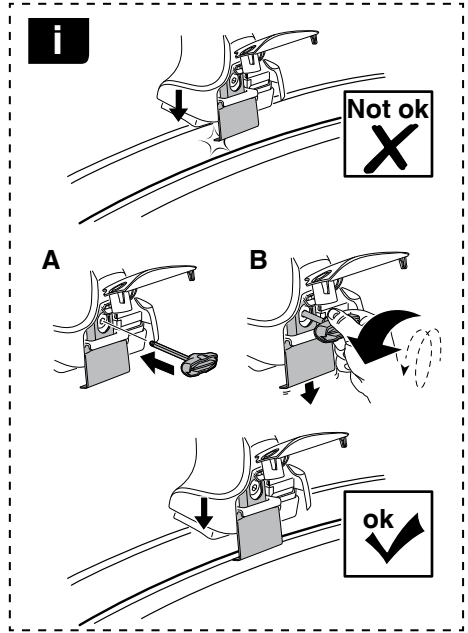


5

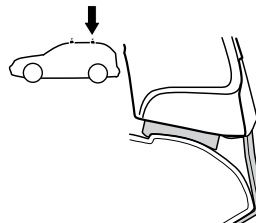
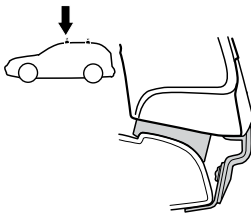
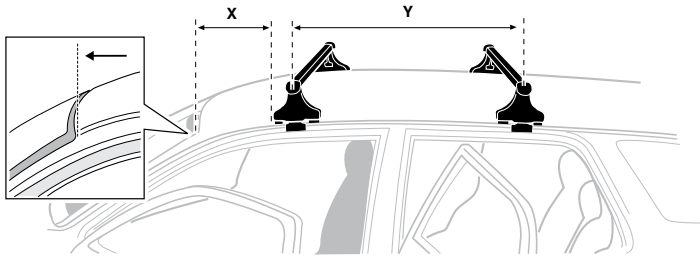
DODGE Avenger, 4-dr Sedan, *07-



6



	X mm	Y mm	X inch	Y inch
DODGE Avenger, 4-dr Sedan, *07-	255 mm	700 mm	10"	27 1/2"



7



GB/US Tighten alternately
 D Die Schrauben abwechselnd anziehen
 F Serrer alternativement chaque côté
 NL Afwisselend aan de linker- en de rechterkant aandraaien
 I Alternare il serraggio delle viti
 E Apertar alternativamente
 PT Aperte alternadamente
 S Dra åt växelvis
 FIN Kierrä vuorotellen
 EST Pinguldage vaheldumisi
 LAT Pieļieciet pamišus
 LIT Užsukinėkite pakaitomis
 PL Śruby dokręcaj naprzemiennie
 RU Затягивайте попеременно

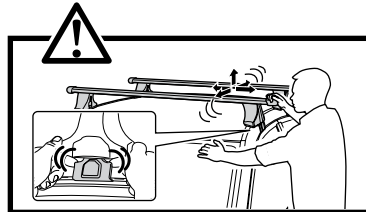
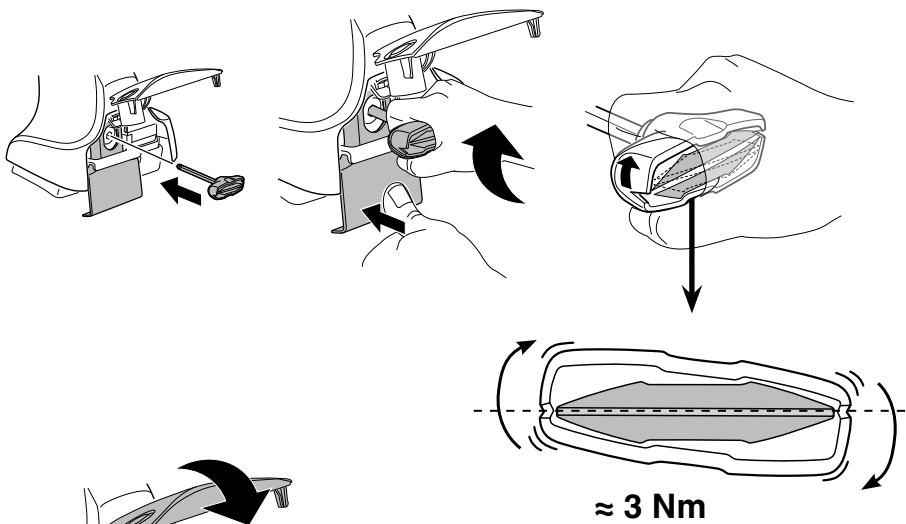
CZ Pokręťta bagażnika dokręcaj dokręcaj naprzemiennie.
 SK Dofahajte striedavo
 SLO Privijajte izmenično.
 HR Naizmjenično zategnite
 HU Egymástól függetlenül szorítandó
 GR Σφιγίγεται εναλλάξ
 TR Dönüşümlü sıkın

中文 交替拧紧

한국어 번갈아 가며 조이십시오.

日本語 交互に締め付けてください。

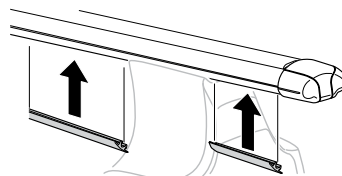
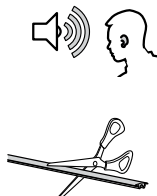
ไทย ชันในแบบสลับ



8



x1
17 mm





THULE
SWEDEN
**ONE
KEY
SYSTEM**



		(x4)
		(x6)
		(x8)
NA		(x10)
EUR		(x12)
ASIA		



WW ▶ Thule Sweden AB, Box 69, 330 33 Hillerstorp, SWEDEN
NA ▶ Thule Inc., 42 Silvermine Road, Seymour, Connecticut 06483, USA

info@thule.com
customer.service@thule.com

www.thule.com