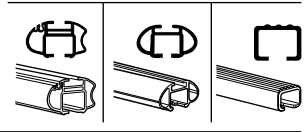
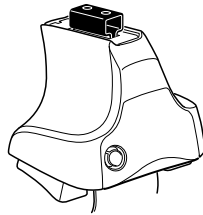


Kit 1441

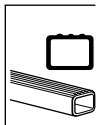
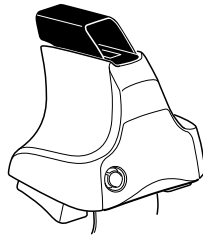
VOLVO C30, 3-dr Coupé, 07- / *08-

*North America

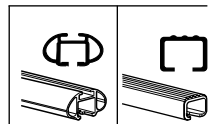
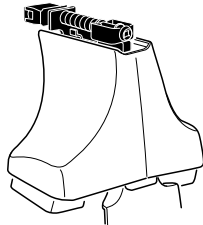
480R
754



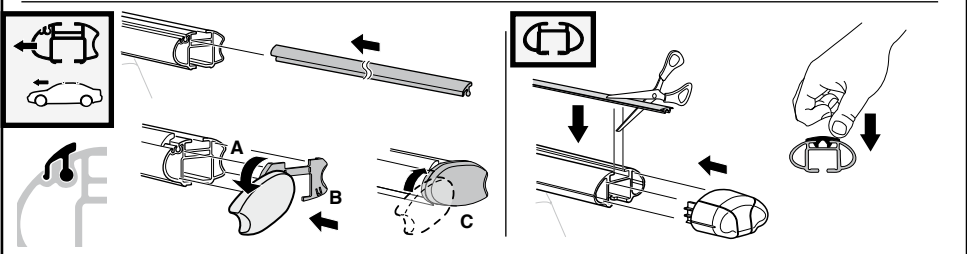
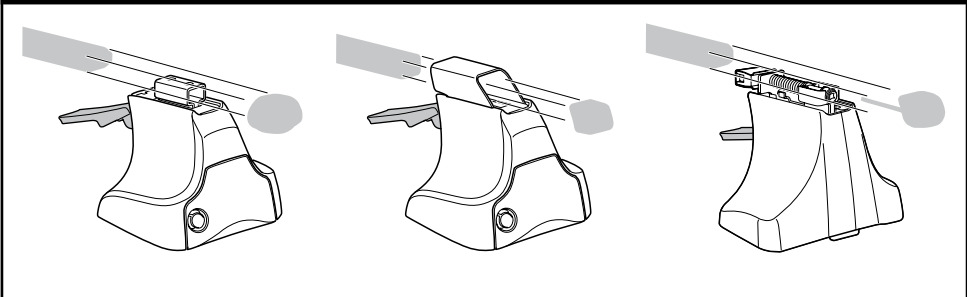
480

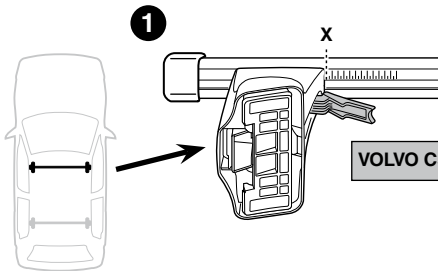
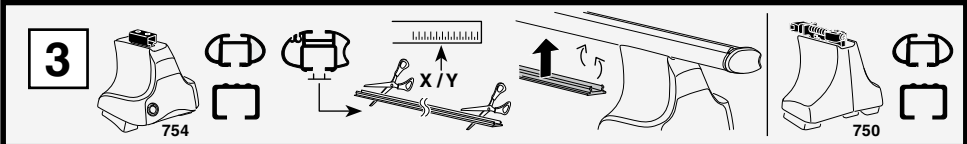


750

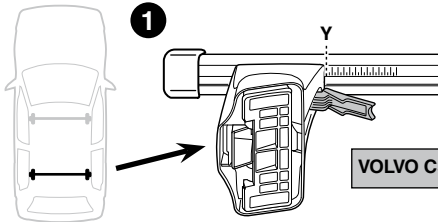
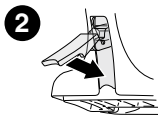


Kit

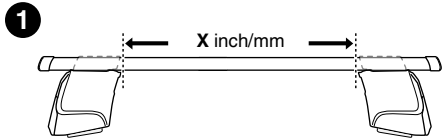
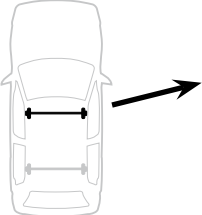
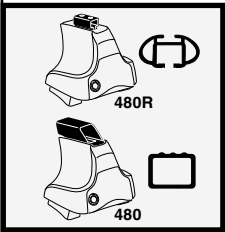
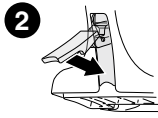




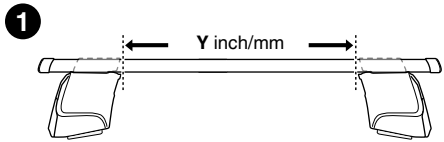
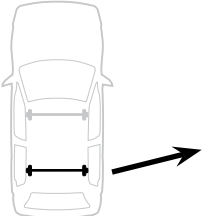
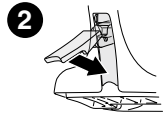
VOLVO C30, 3-dr Coupé, 07- / *08-	X
	40,5



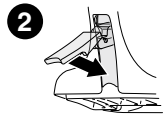
VOLVO C30, 3-dr Coupé, 07- / *08-	Y
	25



VOLVO C30, 3-dr Coupé, 07- / *08-	X inch	X mm
	41 5/8"	1056 mm



VOLVO C30, 3-dr Coupé, 07- / *08-	Y inch	Y mm
	35 1/2"	901 mm



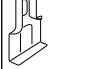
4

VOLVO C30, 3-dr Coupé, 07-/*08-

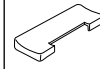
204



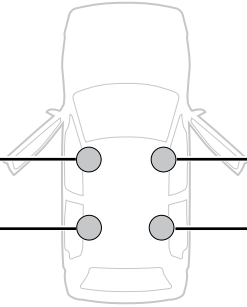
889



206



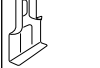
842



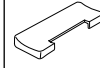
273



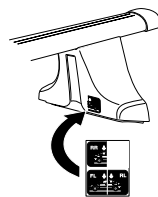
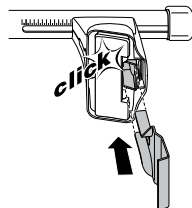
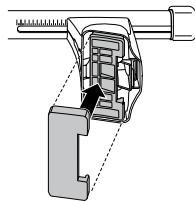
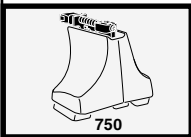
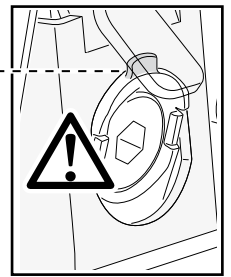
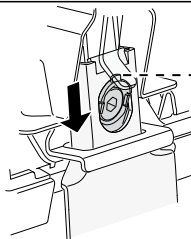
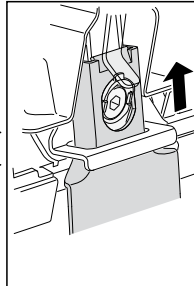
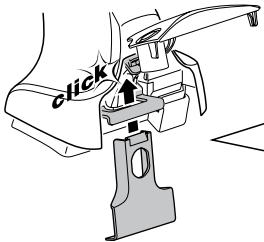
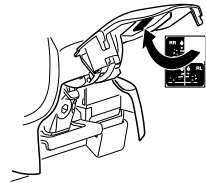
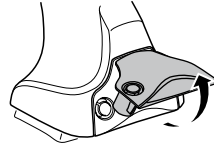
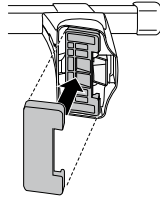
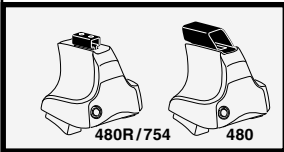
841



274



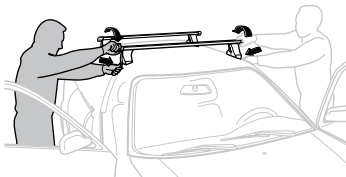
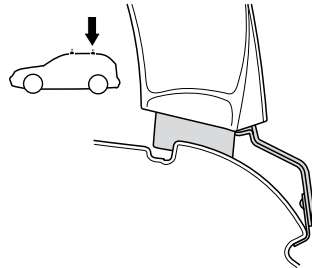
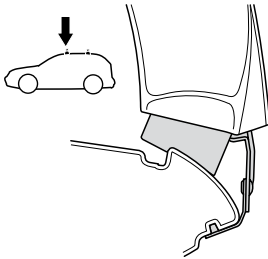
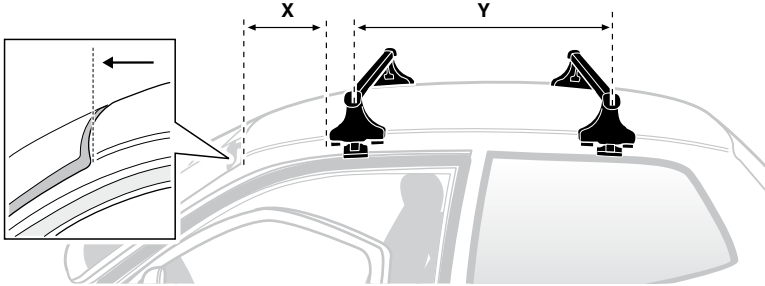
841



5



VOLVO C30, 3-dr Coupé, 07- / *08-	X mm	Y mm	X inch	Y inch
	220 mm	770 mm	8 5/8"	30 3/8"



GB/US Tighten alternately

D Die Schrauben abwechselnd anziehen

F Serrer alternativement chaque côté

NL Afwisselend aan de linker- en de rechterkant aandraaien

I Alternare il serraggio delle viti

E Apertar alternativamente

PT Aperte alternadamente

S Dra åt växelvis

FIN Kierrä vuorotellen

EST Pinguldage vaheldumisi

LAT Pielieciet pamišus

LIT Užsukinėkite pakaitomis

PL Śruby dokręcaj naprzemiennie

RU Затягивайте попеременно

CZ Pokręťta bagażnika dokręcaj dokręcaj naprzemiennie.

SK Doťahujte striedavo

SLO Privijajte izmenično.

HR Naizmjenično zategnite

HU Egymástól függetlenül szorítandó

GR Σφιγγετε εναλλάξ

TR Dönüşümlü sıkın

中文 交替拧紧

한국어 번갈아 가며 조이십시오.

日本語 交互に締め付けてください。

ไทย ชั้นโนแบบสลับ

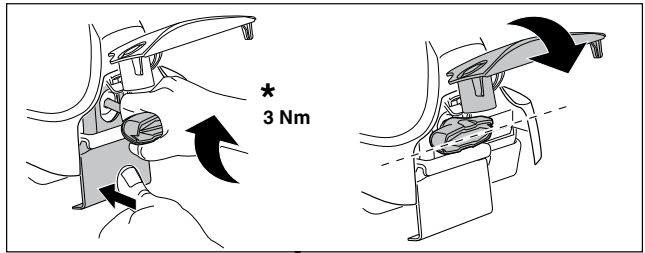
6



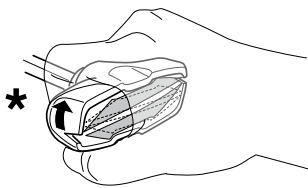
480R/754



480



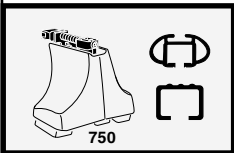
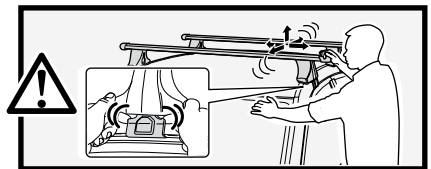
*
3 Nm



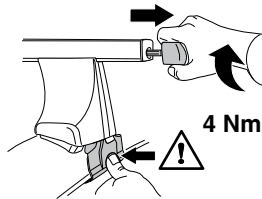
*



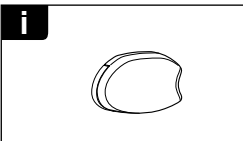
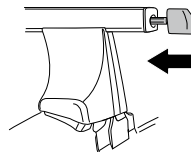
*
≈ 3 Nm



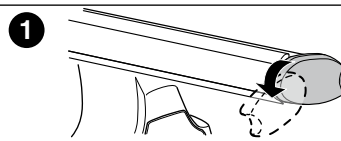
750



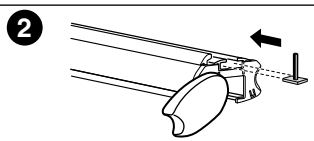
4 Nm



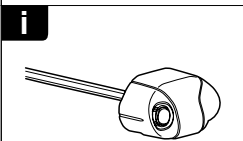
i



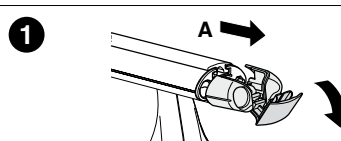
1



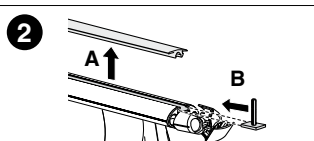
2



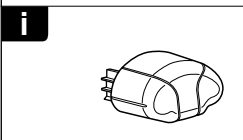
i



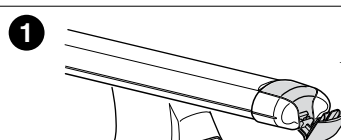
1



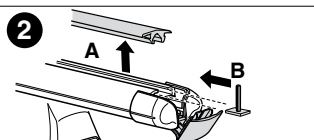
2



i



1



2



THULE
SWEDEN
**ONE
KEY
SYSTEM**



544		(x4)
596		(x6)
588		(x8)
NA 510		(x10)
EUR		
ASIA 452		(x12)

