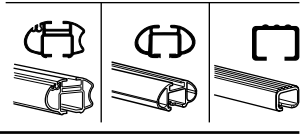
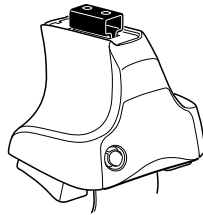


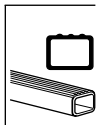
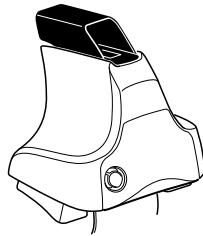
# Kit 1502

TOYOTA Avensis, 4-dr Sedan, 09-

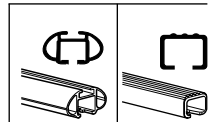
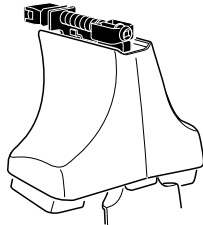
480R  
754



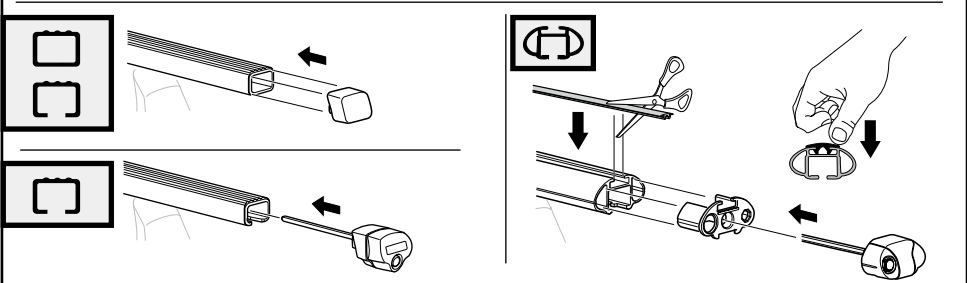
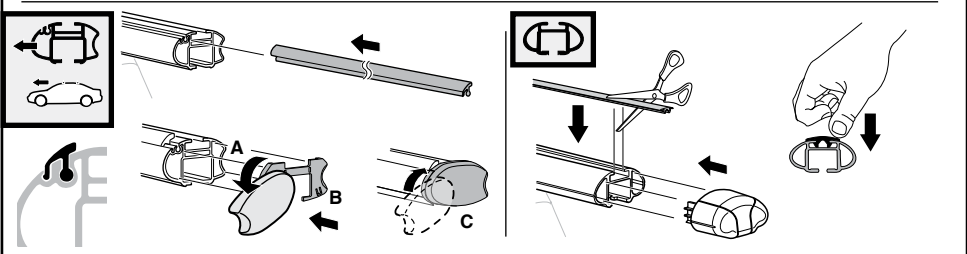
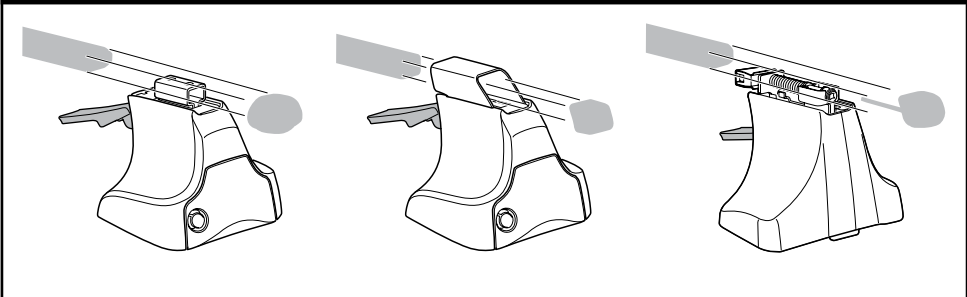
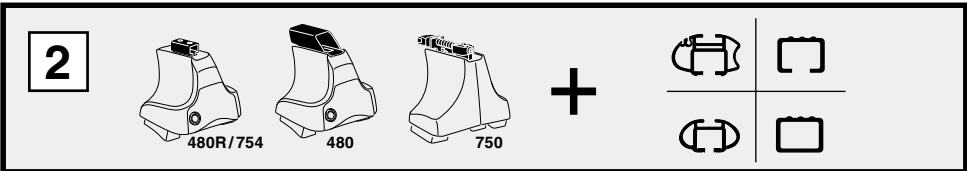
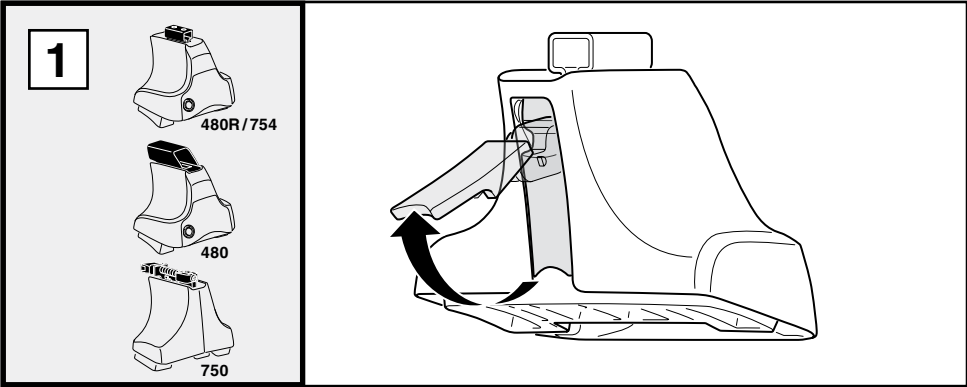
480

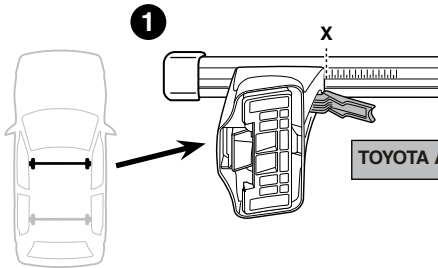
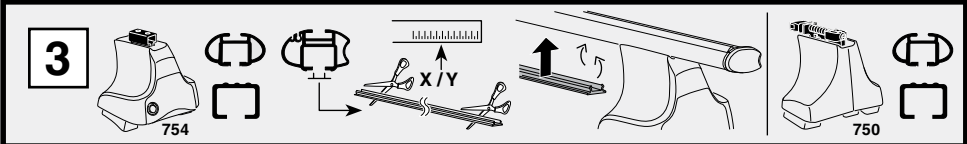


750

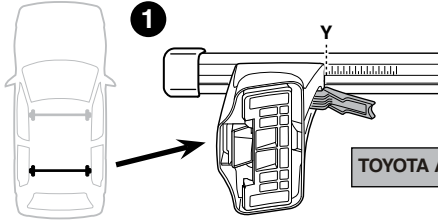
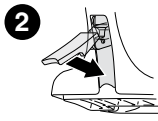


**Kit**

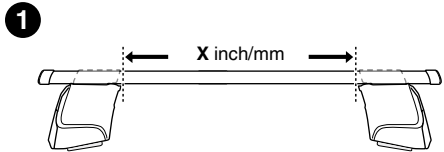
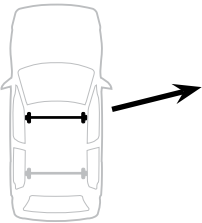
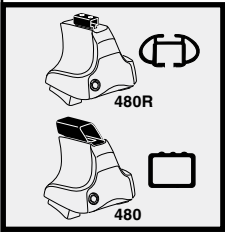
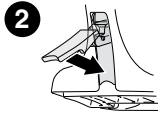




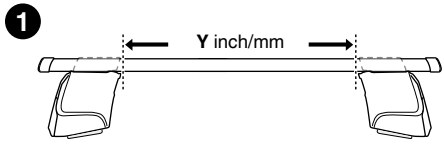
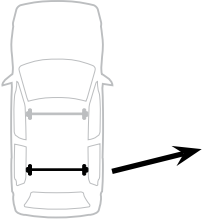
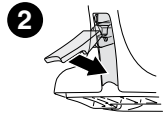
	X
TOYOTA Avensis, 4-dr Sedan, 09-	38,5



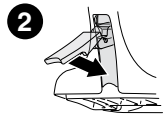
	Y
TOYOTA Avensis, 4-dr Sedan, 09-	36,5



	X inch	X mm
TOYOTA Avensis, 4-dr Sedan, 09-	40 3/4"	1036 mm

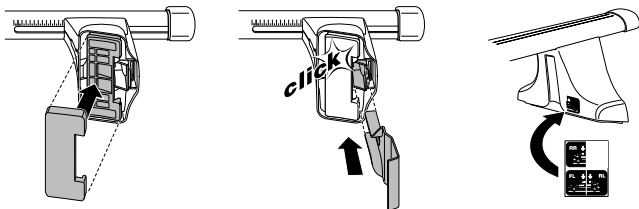
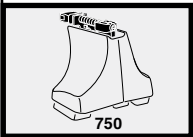
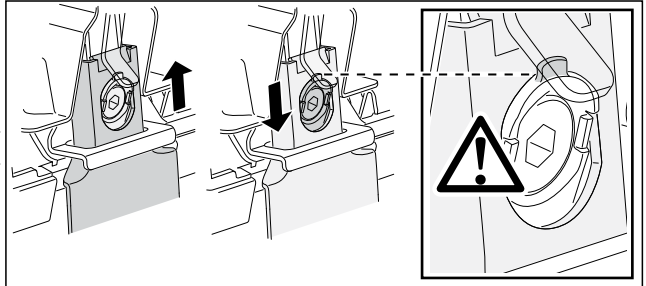
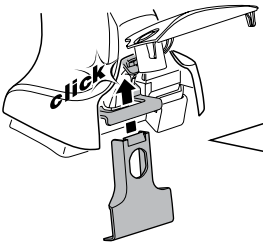
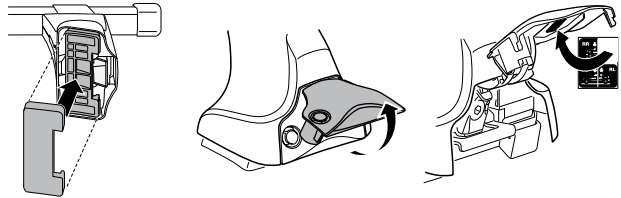
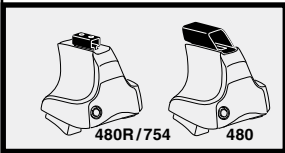
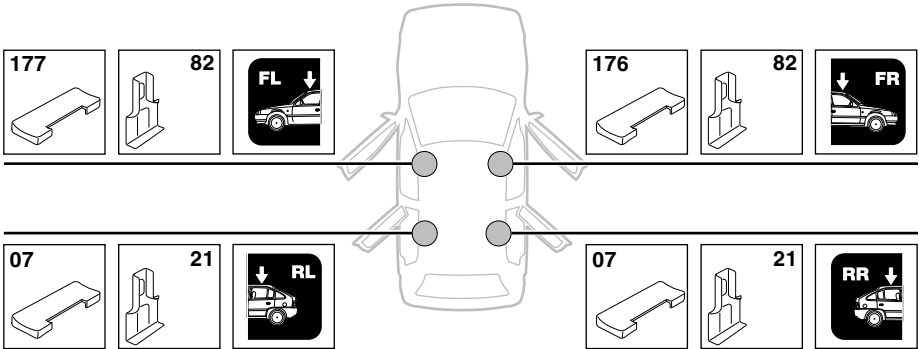


	Y inch	Y mm
TOYOTA Avensis, 4-dr Sedan, 09-	40"	1016 mm

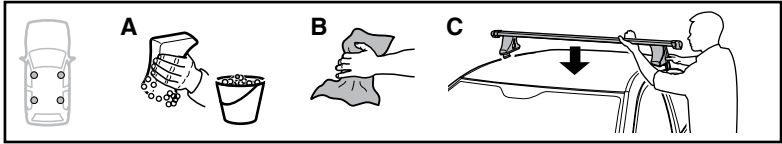


# 4

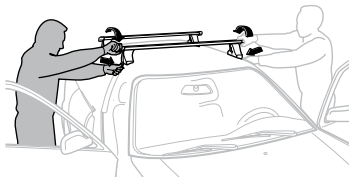
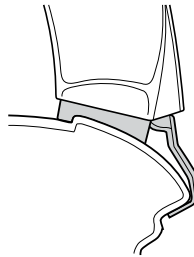
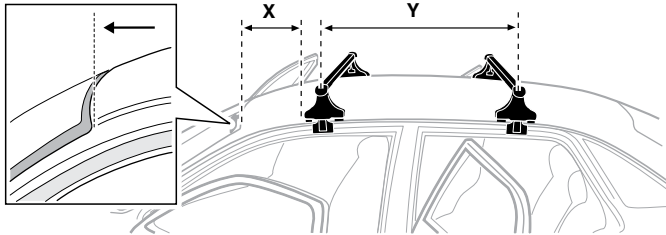
TOYOTA Avensis, 4-dr Sedan, 09-



5



	X mm	Y mm	X inch	Y inch
TOYOTA Avensis, 4-dr Sedan, 09-	260 mm	600 mm	10 1/4"	23 5/8"



**GB/US** Tighten alternately

**D** Die Schrauben abwechselnd anziehen

**F** Serrer alternativement chaque côté

**NL** Afwisselend aan de linker- en de rechterkant aandraaien

**I** Alternare il serraggio delle viti

**E** Apretar alternativamente

**PT** Aperte alternadamente

**S** Dra åt växelvis

**FIN** Kierrä vuorotellen

**EST** Pinguldage vaheldumisi

**LAT** Pielieciet pamišus

**LIT** Užsukinėkite pakaitomis

**PL** Śruby dokręcaj naprzemiennie

**RU** Затягивайте попеременно

**CZ** Pokręťta багаžníka dokręcaj dokręcaj naprzemiennie.

**SK** Doťahujte striedavo

**SLO** Privijajte izmenično.

**HR** Naizmjenično zategnite

**HU** Egymástól függetlenül szorítandó

**GR** Σφιγγετε εναλλάξ

**TR** Dönüşümlü sıkın

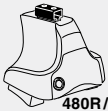
**中文** 交替拧紧

**한국어** 번갈아 가며 조이십시오.

**日本語** 交互に締め付けてください。

**ไทย** ชันโนแบบสลับ

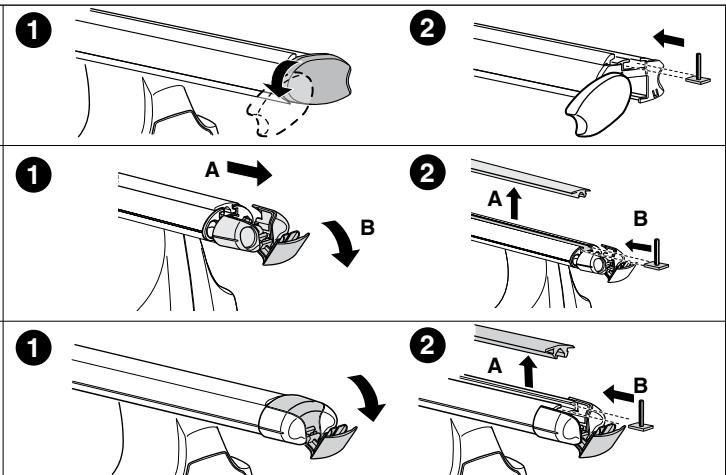
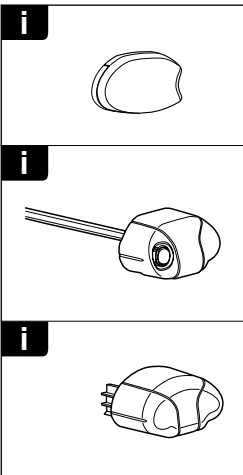
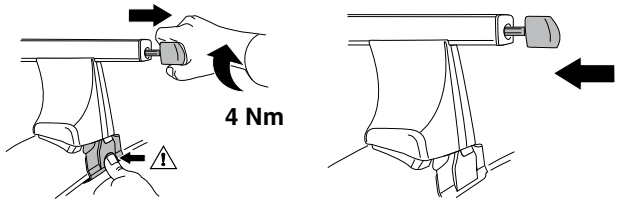
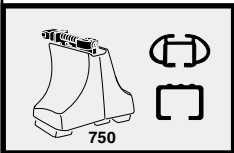
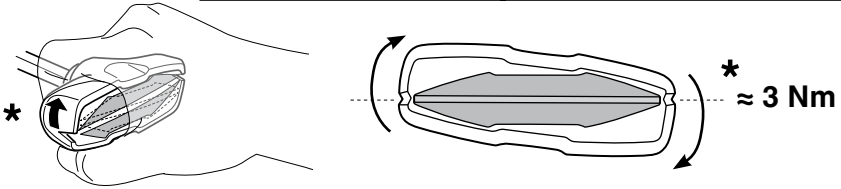
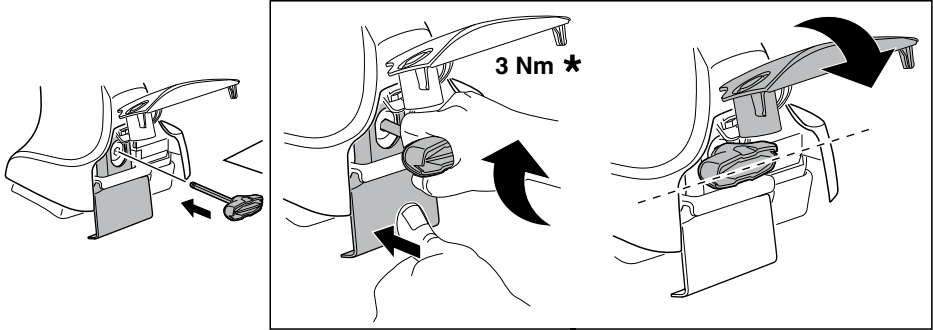
6

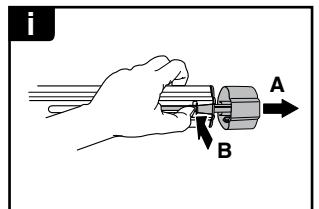
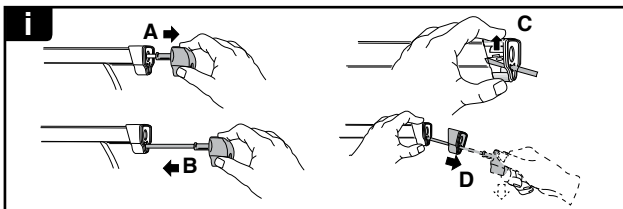
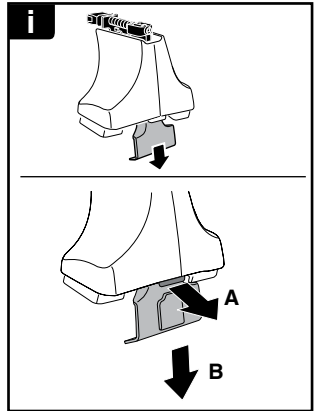
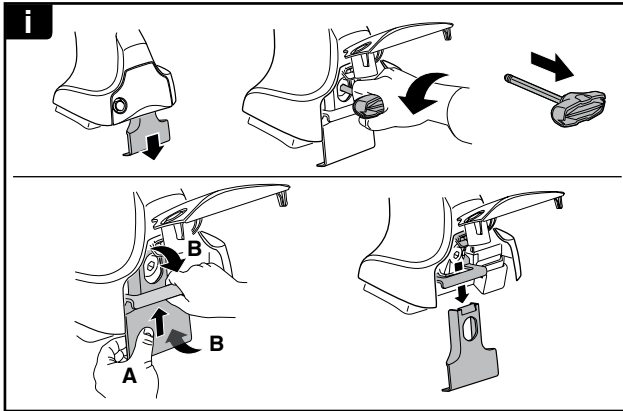
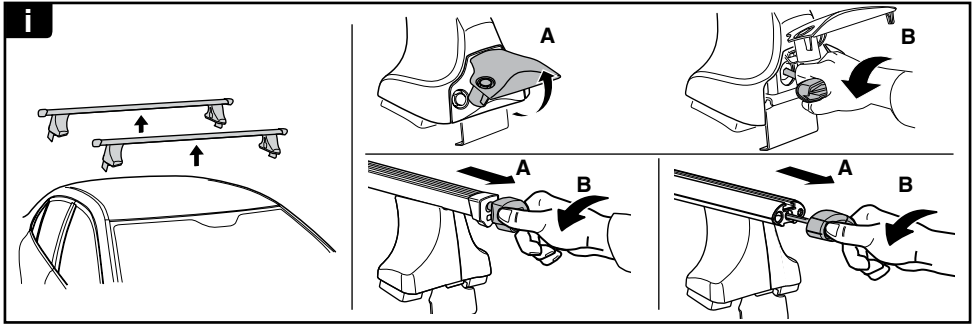


480R/754

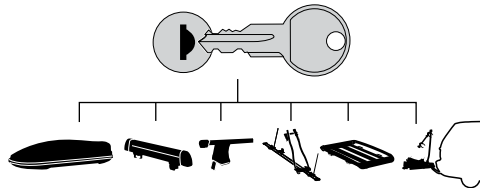


480





**THULE**  
SWEDEN  
**ONE  
KEY  
SYSTEM**



- 544 (x4)
- 596 (x6)
- 588 (x8)
- NA 510 (x10)
- EUR 452 (x12)
- ASIA

