

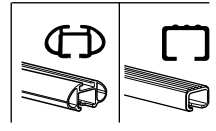
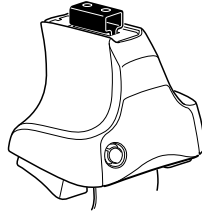
Kit 1366

MINI Cooper (Mk.I), 3-dr Hatchback, 01-06 / *03-07

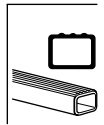
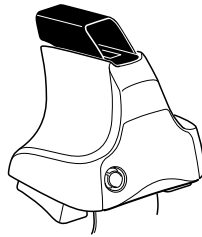
MINI Cooper (Mk.II), 3-dr Hatchback, 07- / *08-

*North America

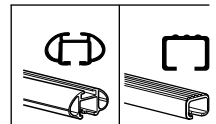
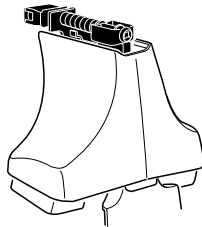
480R
754

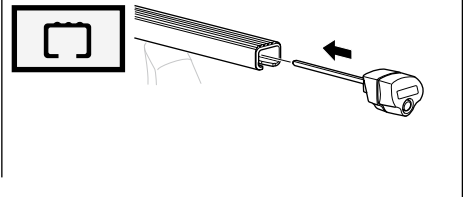
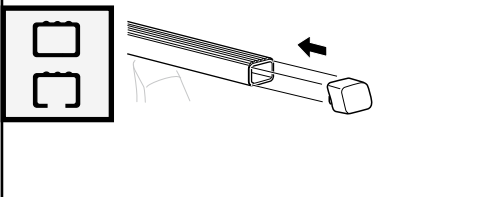
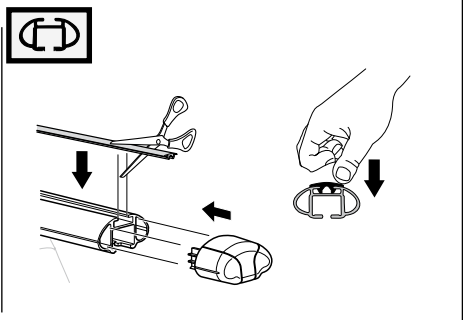
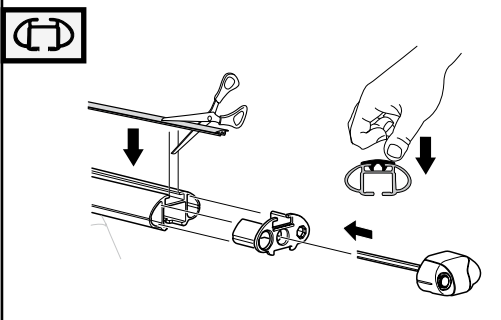
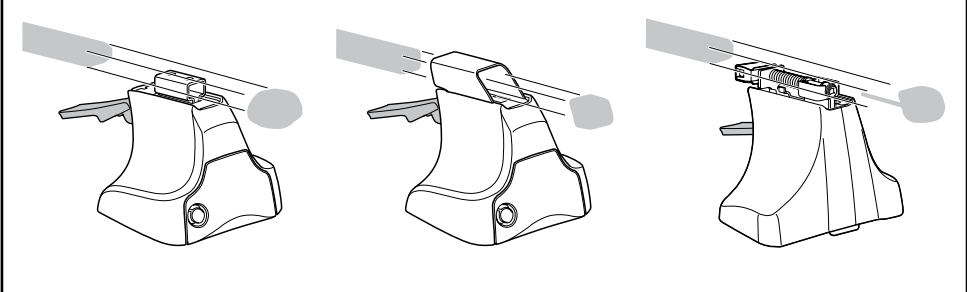
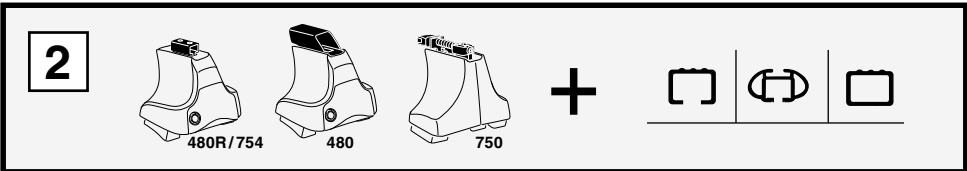
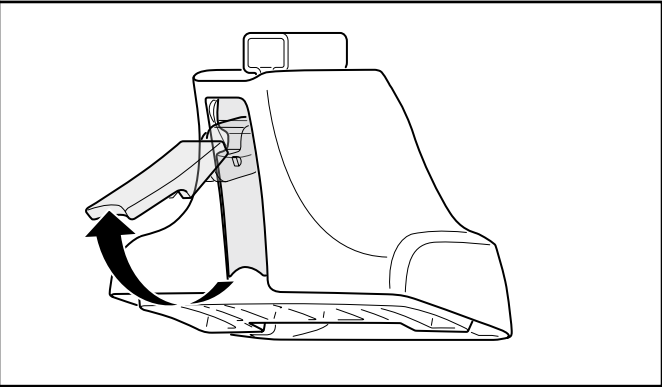
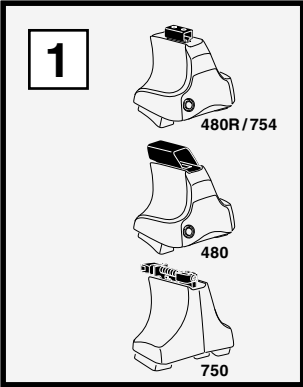


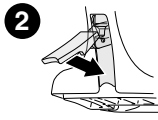
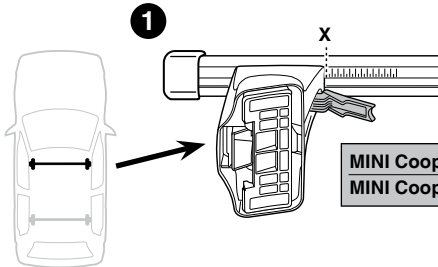
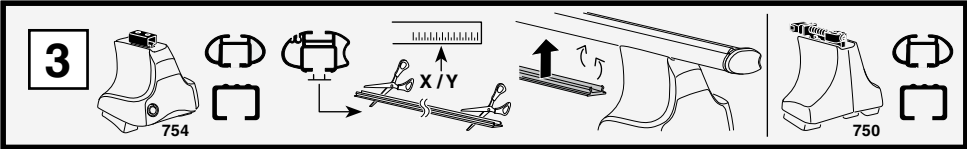
480



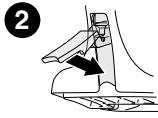
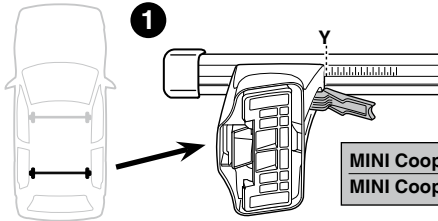
750



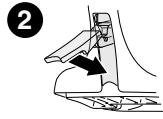
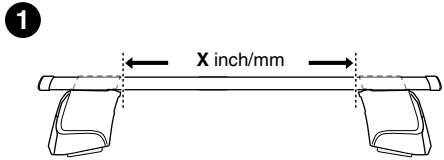
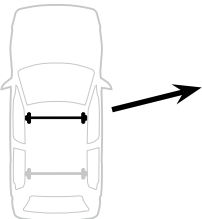
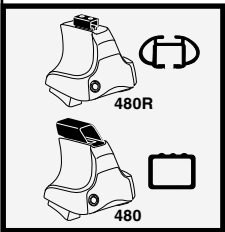




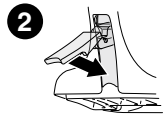
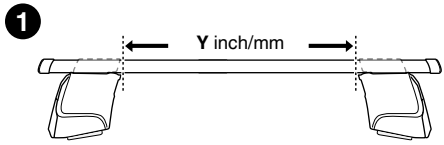
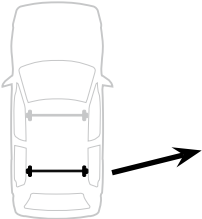
	X
MINI Cooper (Mk.I), 3-dr Hatchback, 01-06 / *03-07	31
MINI Cooper (Mk.II), 3-dr Hatchback, 07- / *08-	28



	Y
MINI Cooper (Mk.I), 3-dr Hatchback, 01-06 / *03-07	32
MINI Cooper (Mk.II), 3-dr Hatchback, 07- / *08-	32



	X inch	X mm
MINI Cooper (Mk.I), 3-dr Hatchback, 01-06 / *03-07	37 ⁷/₈ "	961 mm
MINI Cooper (Mk.II), 3-dr Hatchback, 07- / *08-	36 ⁵/₈ "	931 mm

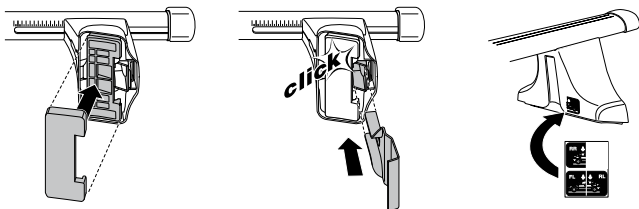
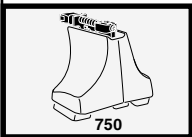
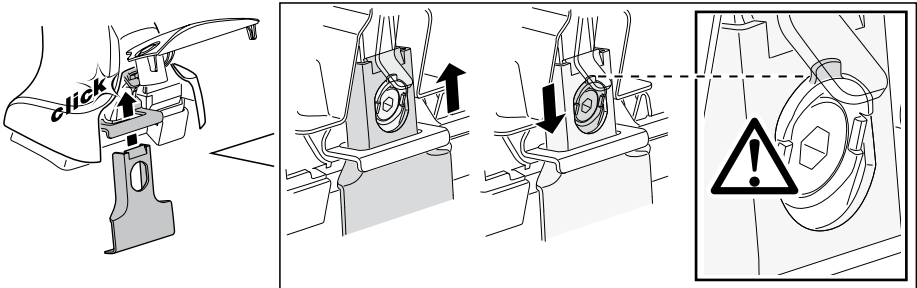
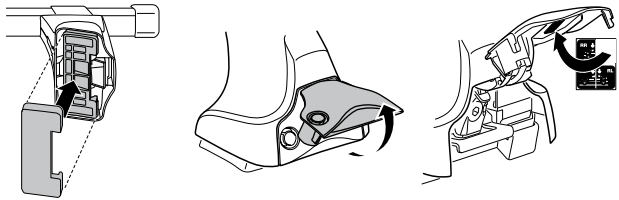
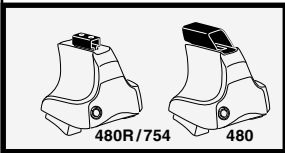
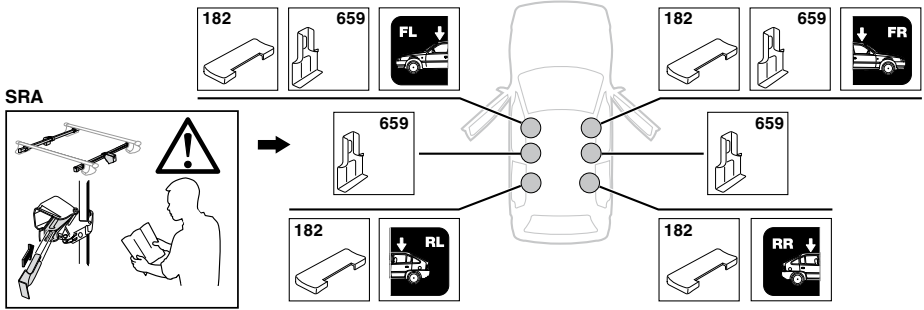


	Y inch	Y mm
MINI Cooper (Mk.I), 3-dr Hatchback, 01-06 / *03-07	38 ¹/₄ "	971 mm
MINI Cooper (Mk.II), 3-dr Hatchback, 07- / *08-	38 ¹/₄ "	971 mm

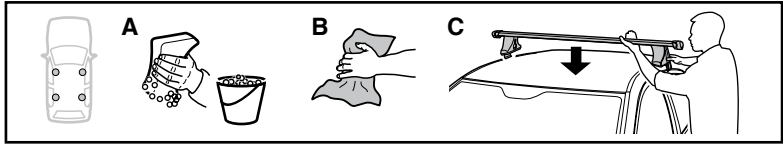
4

MINI Cooper (Mk.I), 3-dr Hatchback, 01-06 / *03-07

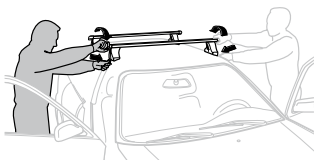
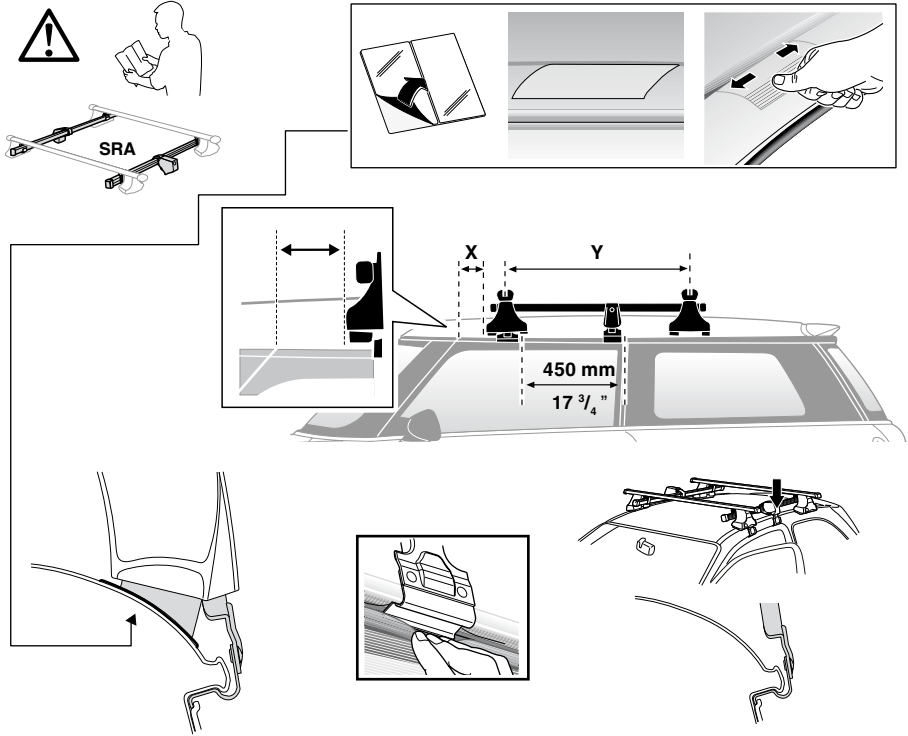
MINI Cooper (Mk.II), 3-dr Hatchback, 07- / *08-



5



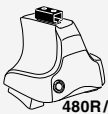
	X mm	Y mm	X inch	Y inch
MINI Cooper (Mk.I), 3-dr Hatchback, 01-06 / *03-07	110 mm	700 mm	4 3/8"	27 1/2"
MINI Cooper (Mk.II), 3-dr Hatchback, 07- / *08-	110 mm	700 mm	4 3/8"	27 1/2"



- GB/US** Tighten alternately
D Die Schrauben abwechselnd anziehen
F Serrer alternativement chaque côté
NL Afwisselend aan de linker- en de rechterkant aandraaien
I Alternare il serraggio delle viti
E Apretar alternativamente
PT Aperte alternadamente
S Dra åt växelvis
FIN Kierrä vuorotellen
EST Pinguldage vaheldumisi
LAT Pievelciet pamišus
LIT Užsukinėkite pakaitomis
PL Śruby dokręcaj naprzemiennie
RU Затягивайте попеременно

- CZ** Pokrétla bagazníka dokręcaj dokręcaj naprzemiennie.
SK Dofahujte striedavo
SLO Privijajte izmenično.
HR Naizmjerno zategnite
HU Egymástól függetlenül szorítandó
GR Σφιγγετε εναλλάξ
TR Dönüşümlü sıkın
中文 交替拧紧
한국어 번갈아 가며 조이십시오.
日本語 交互に締め付けてください。
ไทย ชั้มนั้แบบสลับ

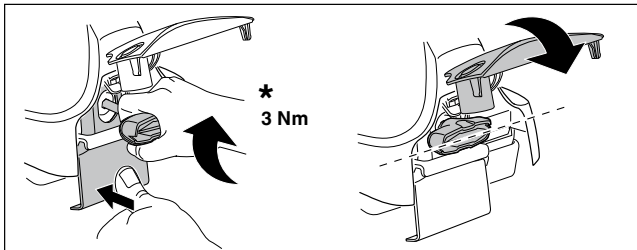
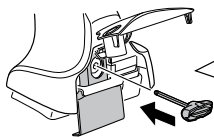
6



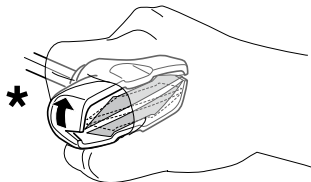
480R/754



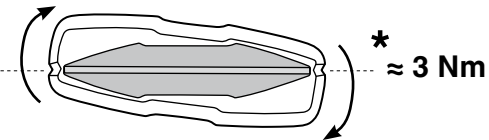
480



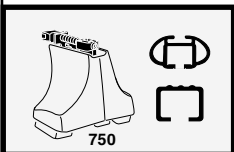
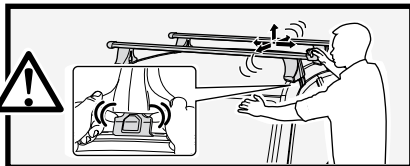
*
3 Nm



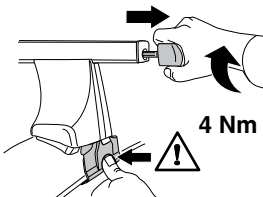
*



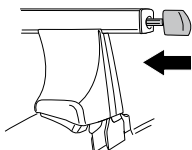
*
≈ 3 Nm



750



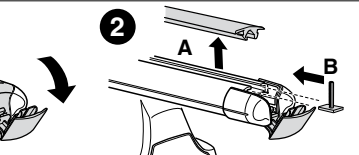
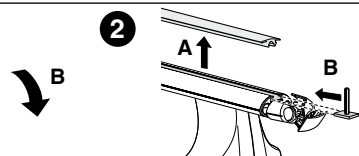
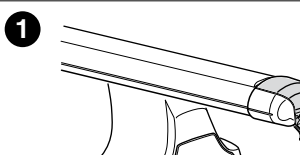
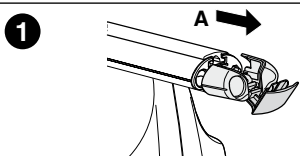
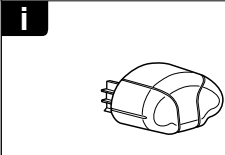
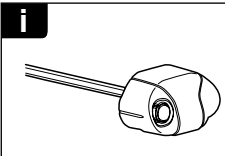
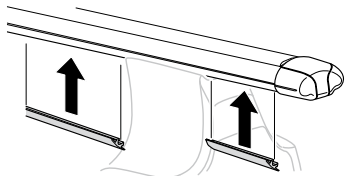
4 Nm

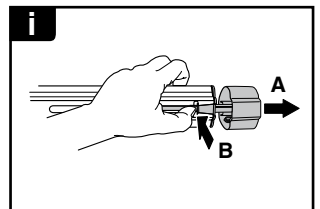
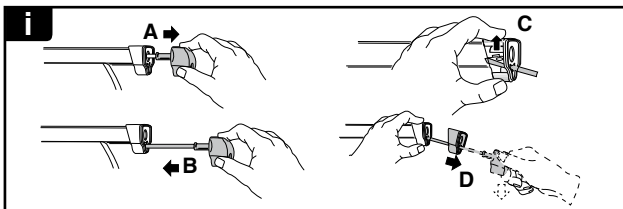
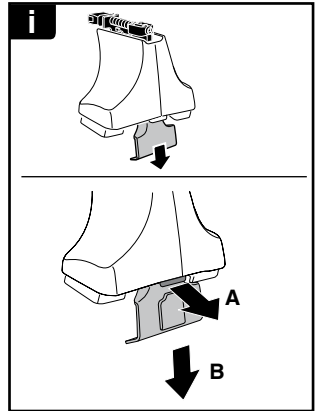
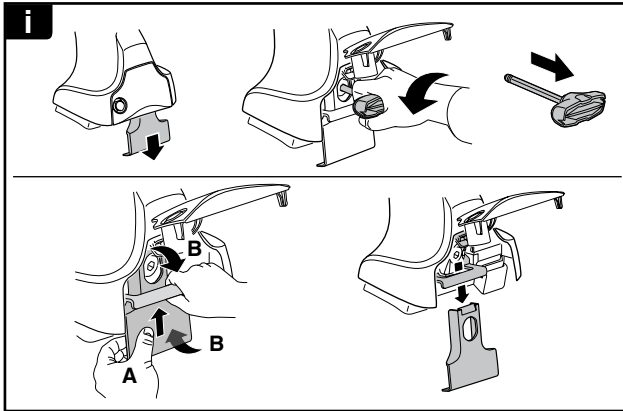
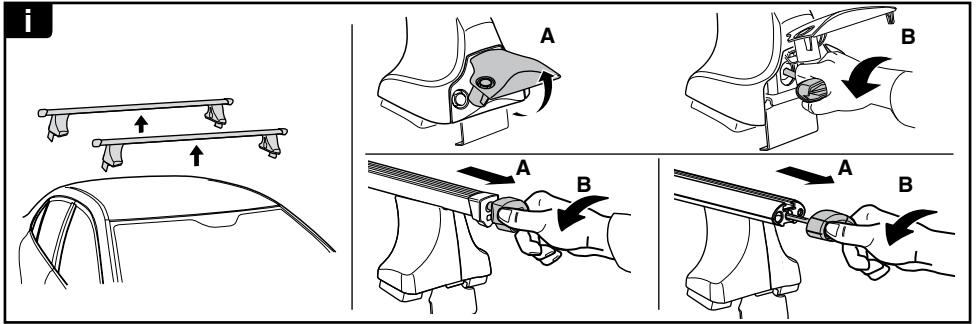


7

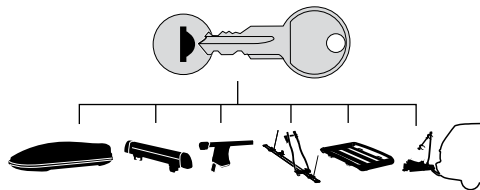





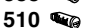
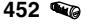
x1
17 mm

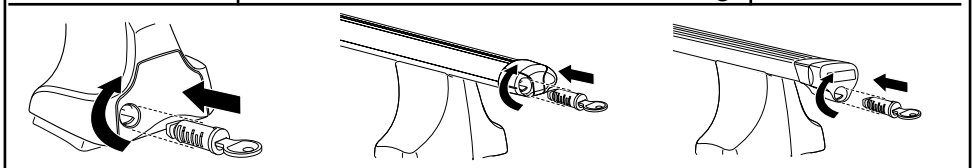




THULE
SWEDEN
**ONE
KEY
SYSTEM**



-  **544** (x4)
 -  **596** (x6)
 -  **588** (x8)
 -  **510** (x10)
 -  **452** (x12)
- NA
EUR
ASIA



WW ▶ Thule Sweden AB, Box 69, 330 33 Hillerstorp, SWEDEN
NA ▶ Thule Inc., 42 Silvermine Road, Seymour, Connecticut 06483, USA

info@thule.com
customer.service@thule.com

 www.thule.com