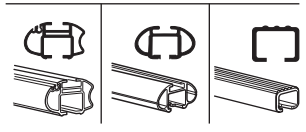
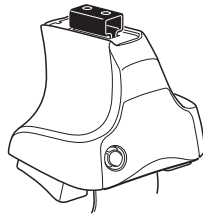


Kit 1243

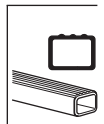
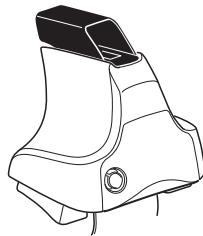
HONDA Civic, 4-dr Sedan, 01-05

HONDA Civic Ferio, 4-dr Sedan, 00-05

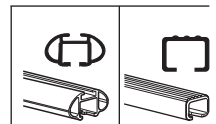
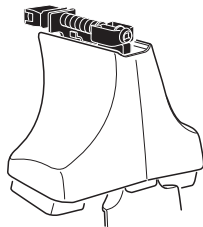
480R
754

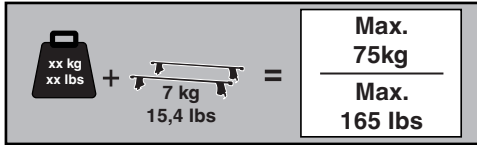


480

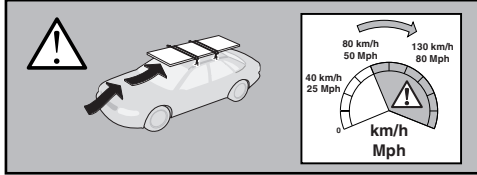


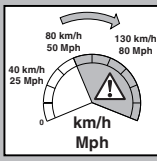
750

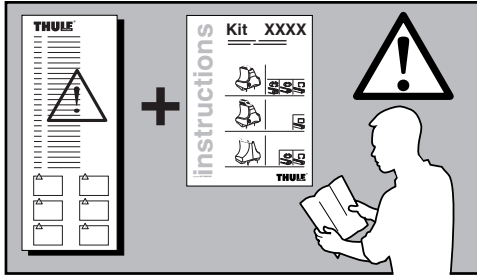




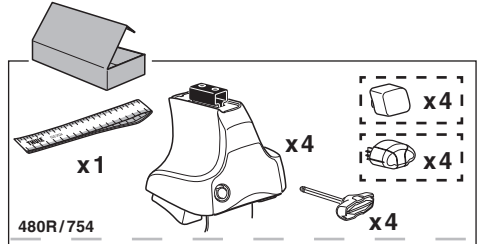
Max. 75kg
Max. 165 lbs



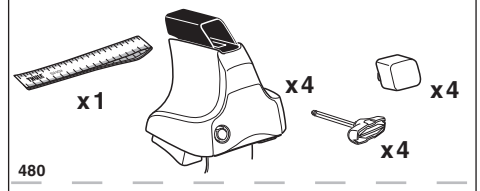




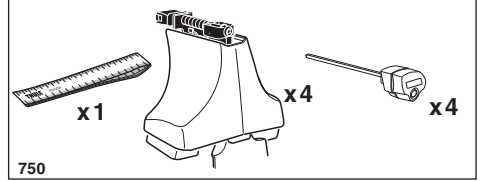
THULE
Kit XXXX
instructions
THULE



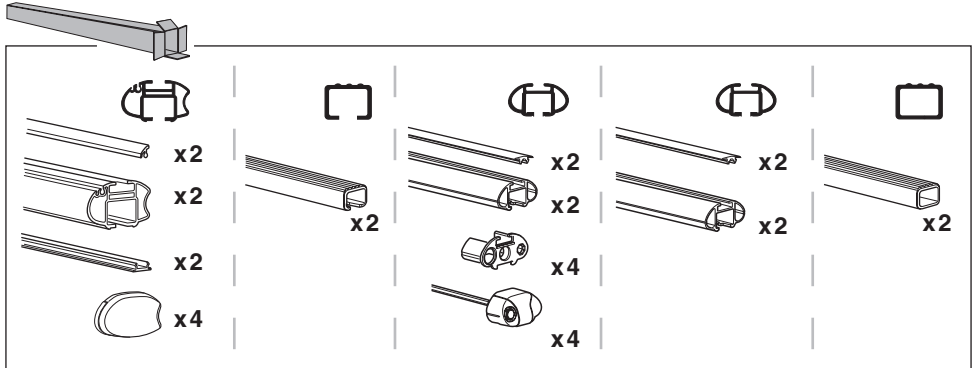
480R/754
x1
x4
x4
x4



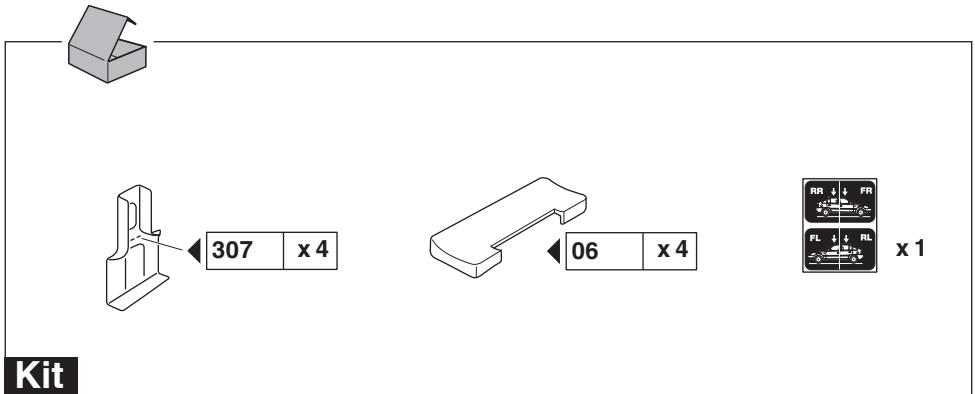
480
x1
x4
x4
x4



750
x1
x4
x4

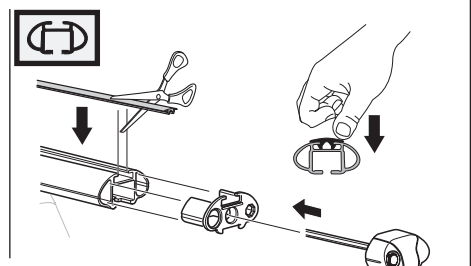
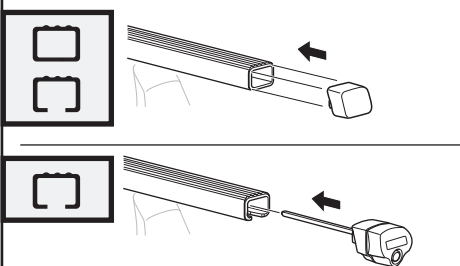
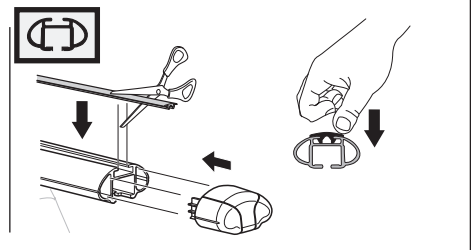
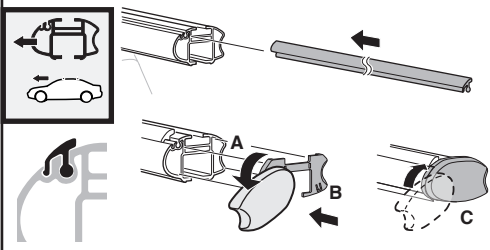
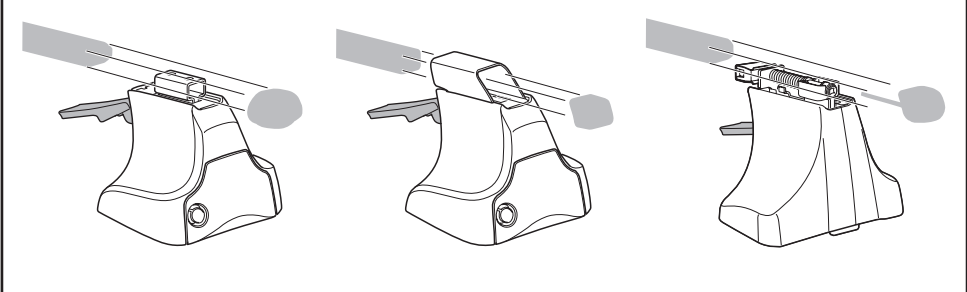
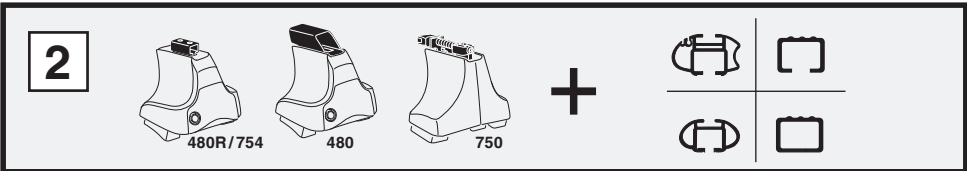
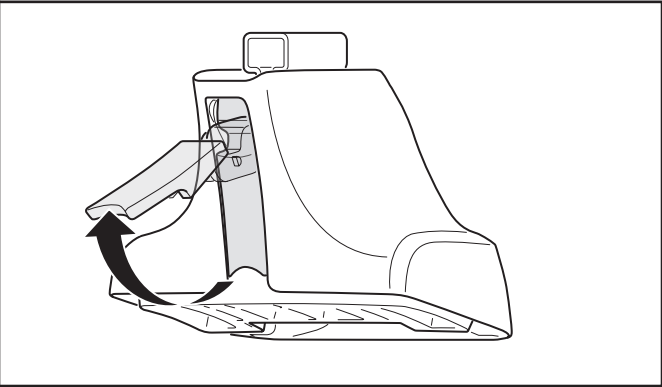
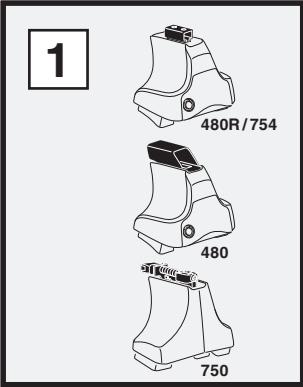


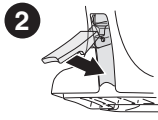
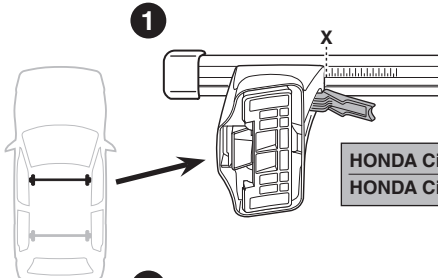
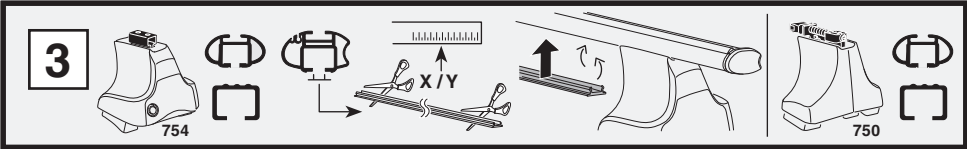
x2
x2
x2
x4
x2
x2
x2
x4
x4
x2
x2
x2
x4
x4
x2
x2
x2
x4
x2



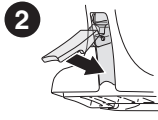
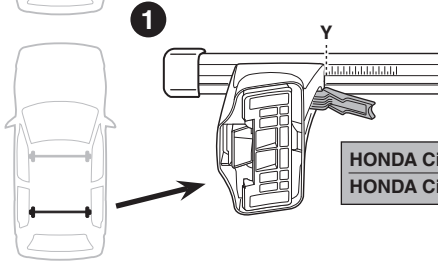
307 **x4**
06 **x4**
x1

Kit

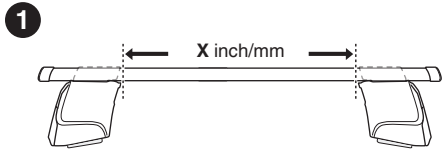
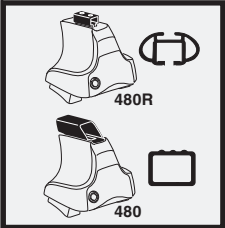




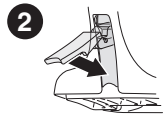
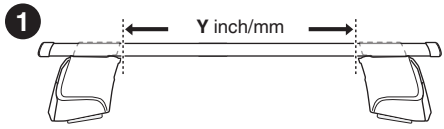
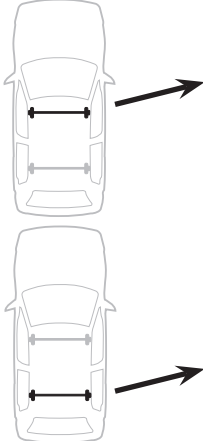
	X
HONDA Civic, 4-dr Sedan, 01-05	30,5
HONDA Civic Ferio, 4-dr Sedan, 00-05	30,5



	Y
HONDA Civic, 4-dr Sedan, 01-05	29,5
HONDA Civic Ferio, 4-dr Sedan, 00-05	29,5



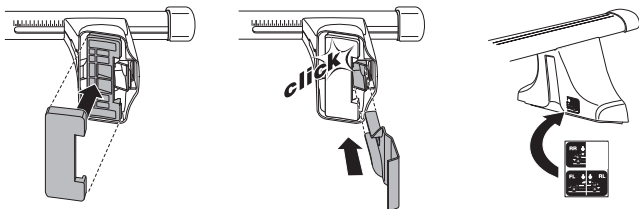
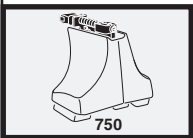
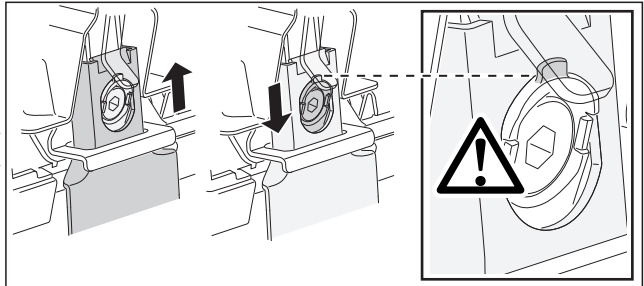
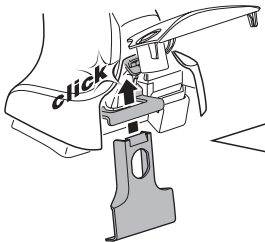
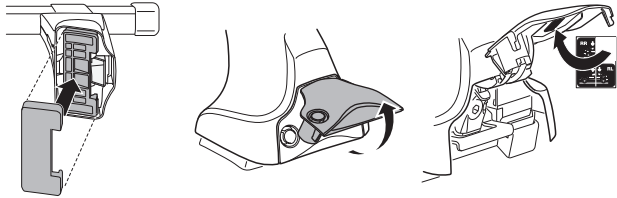
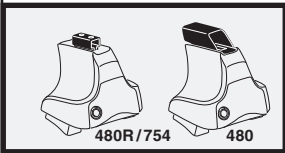
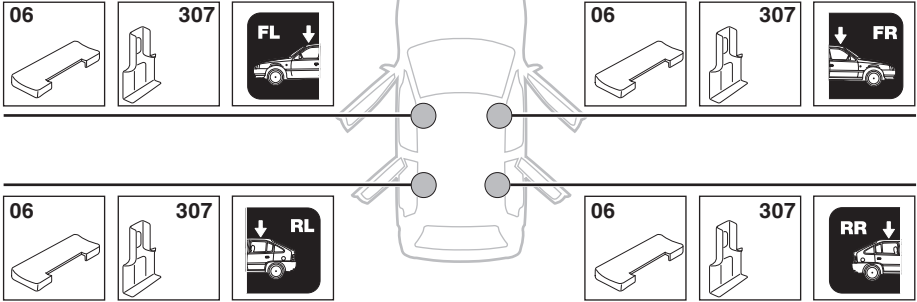
	X inch	X mm
HONDA Civic, 4-dr Sedan, 01-05	37 ⁵ / ₈ "	956 mm
HONDA Civic Ferio, 4-dr Sedan, 00-05	37 ⁵ / ₈ "	956 mm



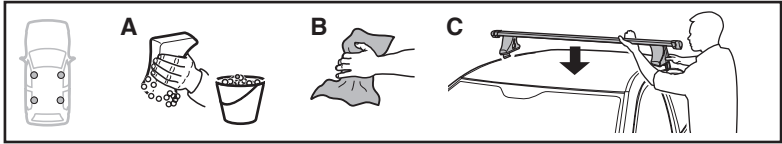
	Y inch	Y mm
HONDA Civic, 4-dr Sedan, 01-05	37 ¹ / ₄ "	946 mm
HONDA Civic Ferio, 4-dr Sedan, 00-05	37 ¹ / ₄ "	946 mm

4

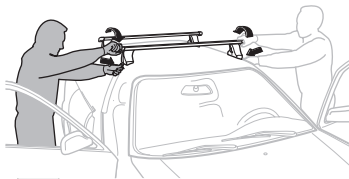
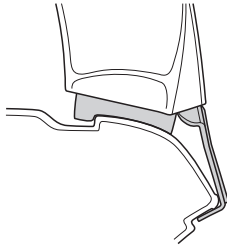
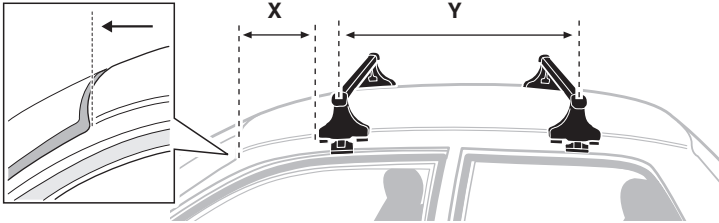
HONDA Civic, 4-dr Sedan, 01-05
 HONDA Civic Ferio, 4-dr Sedan, 00-05



5



	X mm	Y mm	X inch	Y inch
HONDA Civic, 4-dr Sedan, 01-05	250 mm	700 mm	9 7/8"	27 1/2"
HONDA Civic Ferio, 4-dr Sedan, 00-05	250 mm	700 mm	9 7/8"	27 1/2"



GB/US Tighten alternately

D Die Schrauben abwechselnd anziehen

F Serrer alternativement chaque côté

NL Afwisselend aan de linker- en de rechterkant aandraaien

I Alternare il serraggio delle viti

E Serrare alternativamente

PT Aperte alternadamente

S Dra åt växelvis

FIN Kierrä vuorotellen

EST Pinguldage vaheldumisi

LAT Pielvelciet pamišus

LIT Užsukinėkite pakaitomis

PL Śruby dokręcaj naprzemiennie

RU Затягивайте попеременно

CZ Pokręťta bagażníka dokręcaj dokręcaj naprzemiennie.

SK Doťahujte striedavo

SLO Privijajte izmenično.

HR Naizmjenično zategnite

HU Egymástól függetlenül szorítandó

GR Σφίγγετε εναλλάξ

TR Dönüşümlü sıkın

中文 交替拧紧

한국어 번갈아 가며 조이십시오.

日本語 交互に締め付けてください。

ไทย ชั้้นโน้บแบบสลับ

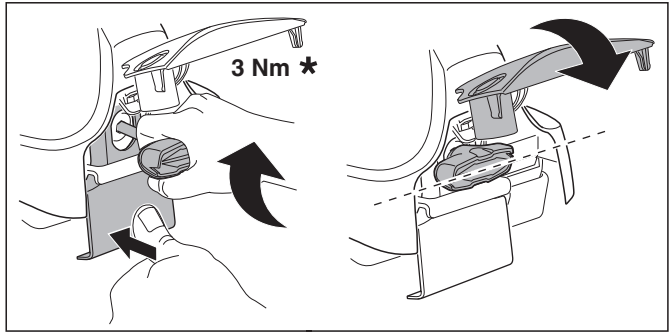
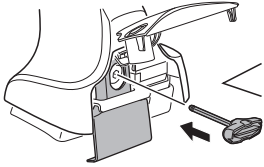
6



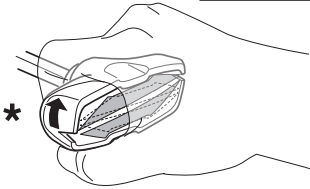
480R/754



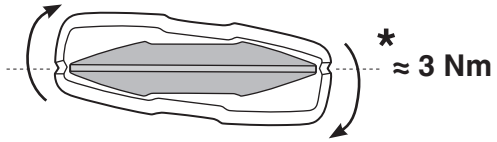
480



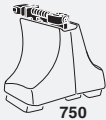
3 Nm *



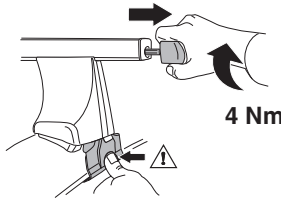
*



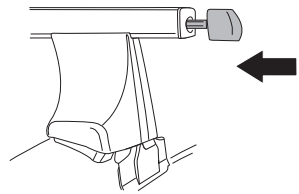
* ≈ 3 Nm



750



4 Nm



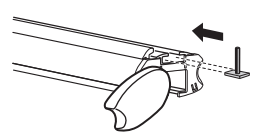
i



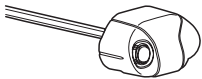
1



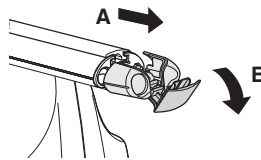
2



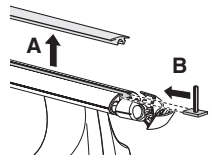
i



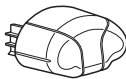
1



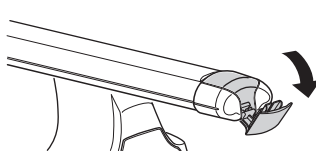
2



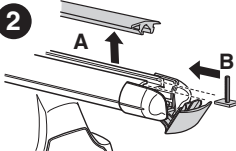
i

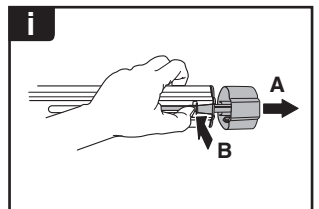
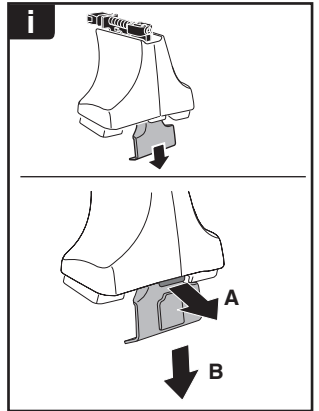
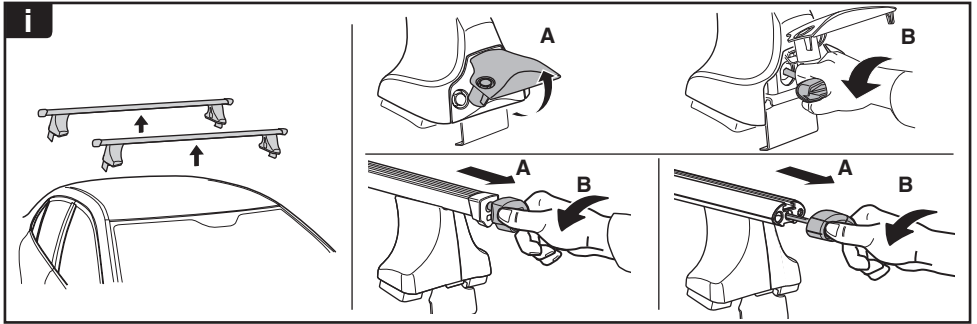


1



2

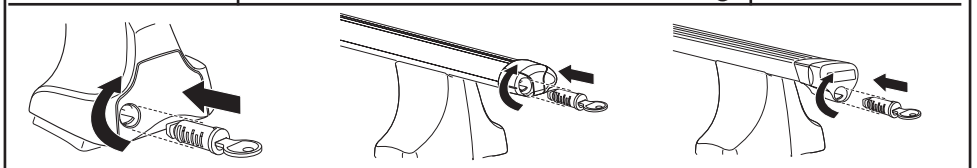




THULE
SWEDEN
**ONE
KEY
SYSTEM**



- 544 (x4)
- 596 (x6)
- 588 (x8)
- NA 510 (x10)
- EUR 452 (x12)
- ASIA



WW ▶ Thule Sweden AB, Box 69, 330 33 Hillerstorp, SWEDEN
NA ▶ Thule Inc., 42 Silvermine Road, Seymour, Connecticut 06483, USA

info@thule.com
customer.service@thule.com

www.thule.com