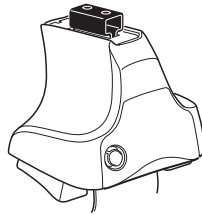


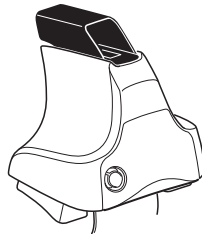
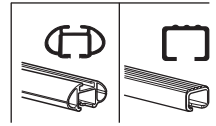
# Kit 1663

**RANGE ROVER Evoque**, 5-dr SUV, 11- / \*12-

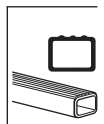
\*North America



**754** Rapid System  
**480R** Rapid Traverse (North America)



**480** Traverse (North America)



**754 Rapid System**  
**480R Rapid Traverse (North America)**

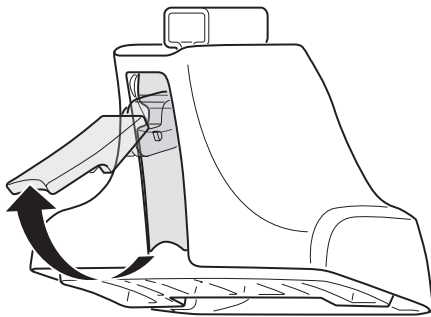
**754 Rapid System**  
**480R Rapid Traverse (North America)**

**480 Traverse (North America)**

**(North America)**

**1186 x 2**  
**1187 x 2**  
**271 x 2**  
**323 x 2**  
**FR FL**  
**FR RL**  
**x 1**

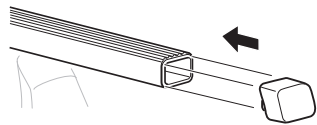
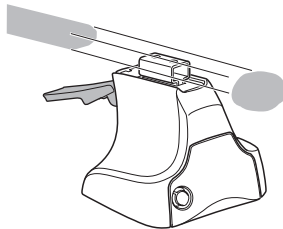
1



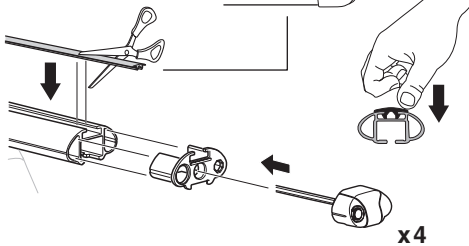
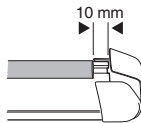
2



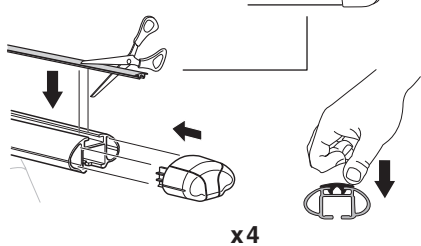
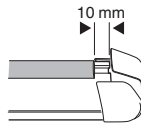
754 Rapid System  
480R Rapid Traverse  
(North America)



x4



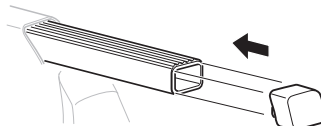
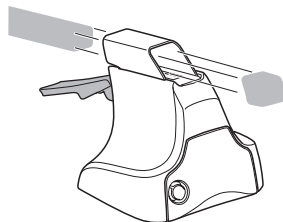
x4



x4

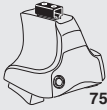


480 Traverse  
(North America)

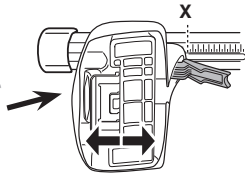


x4

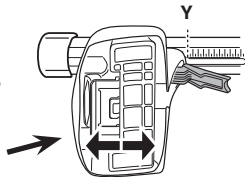
**3**



**754** Rapid System



	<b>X</b>
<b>RANGE ROVER Evoque, 5-dr SUV, 11- / *12-</b>	<b>47,5</b>



	<b>Y</b>
<b>RANGE ROVER Evoque, 5-dr SUV, 11- / *12-</b>	<b>46</b>

**3**

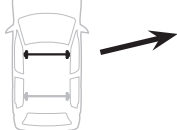


**480R** Rapid Traverse

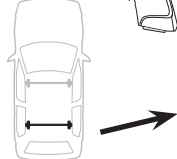


**480** Traverse

**(North America)**

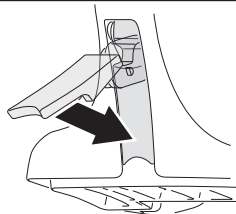


	<b>X inch</b>	<b>X mm</b>
<b>RANGE ROVER Evoque, 5-dr SUV, 11- / *12-</b>	<b>44 <sup>3</sup>/<sub>8</sub>"</b>	<b>1126 mm</b>



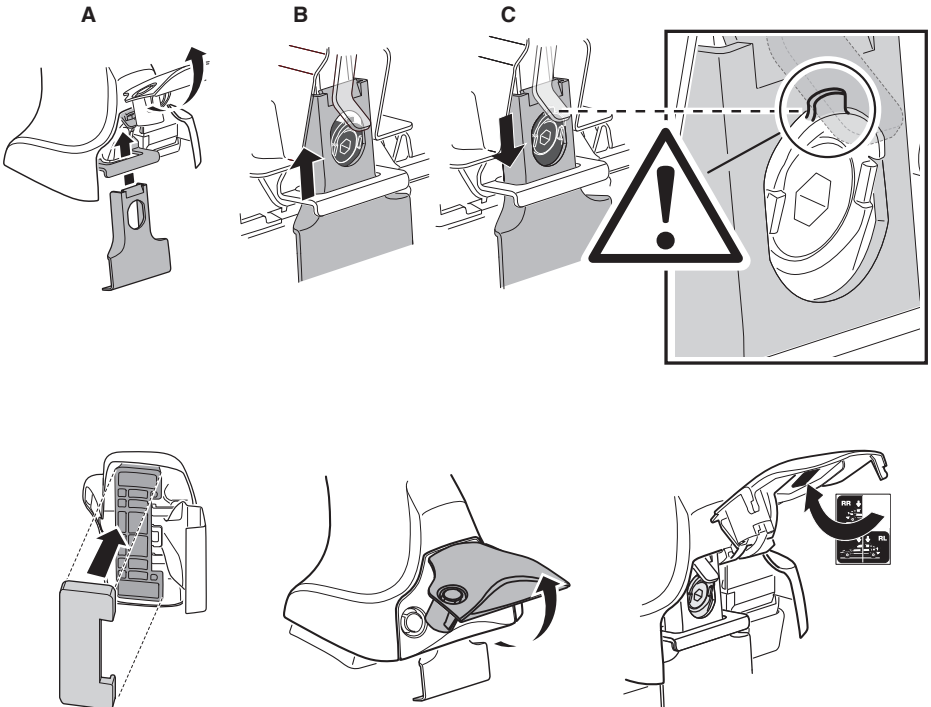
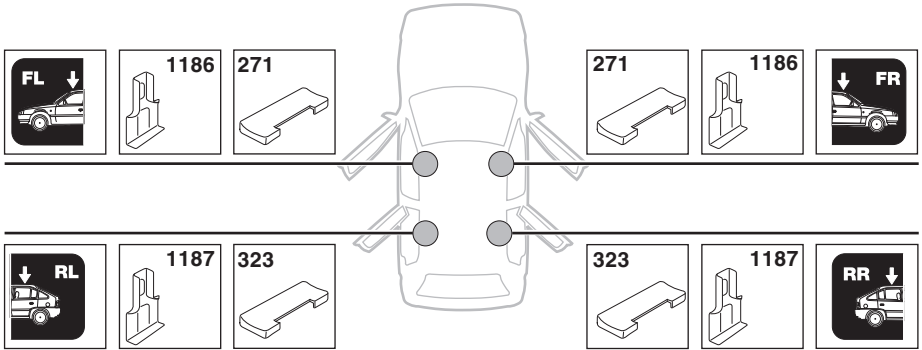
	<b>Y inch</b>	<b>Y mm</b>
<b>RANGE ROVER Evoque, 5-dr SUV, 11- / *12-</b>	<b>43 <sup>3</sup>/<sub>4</sub>"</b>	<b>1111 mm</b>

**4**

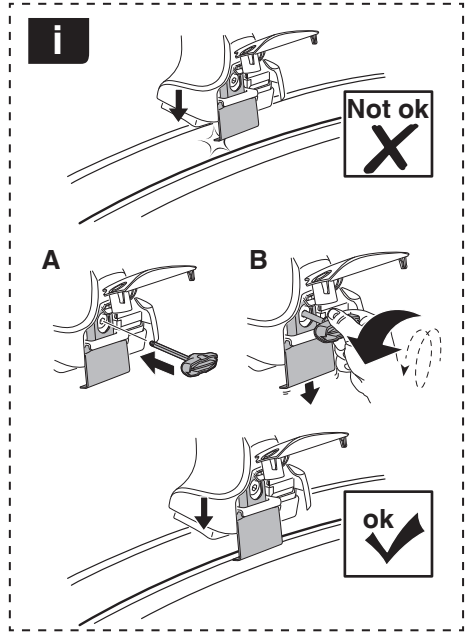
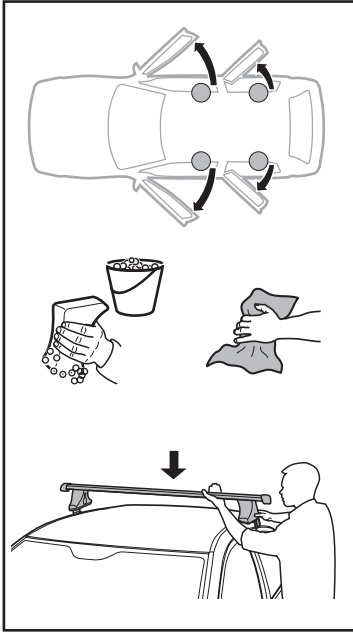


5

RANGE ROVER Evoque, 5-dr SUV, 11- / \*12-

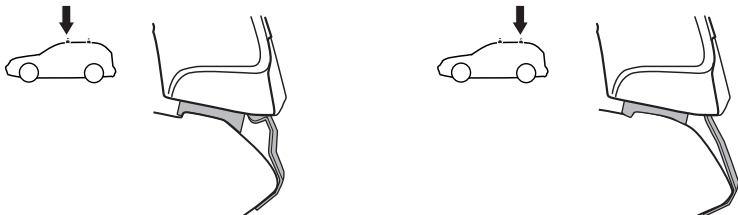
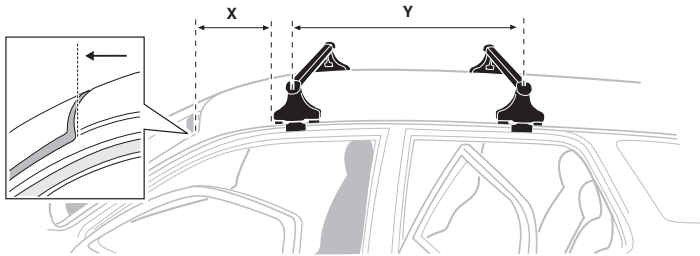


6

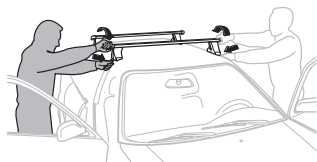


RANGE ROVER Evoque, 5-dr SUV, 11- / \*12-

X mm	Y mm	X inch	Y inch
270 mm	700 mm	10 <sup>5</sup> / <sub>8</sub> "	27 <sup>1</sup> / <sub>2</sub> "



7



**GB/US** Tighten alternately  
**D** Die Schrauben abwechselnd anziehen  
**F** Serrer alternativement chaque côté  
**NL** Afwisselend aan de linker- en de rechterkant aandraaien  
**I** Alternare il serraggio delle viti  
**E** Apertar alternativamente  
**PT** Aperte alternadamente  
**S** Dra åt växelvis  
**FIN** Kierrä vuorotellen  
**EST** Pinguldage vaheldumisi  
**LAT** Pieļieciet pamišus  
**LIT** Užsukinėkite pakaitomis  
**PL** Śruby dokręcaj naprzemiennie  
**RU** Затягивайте попеременно

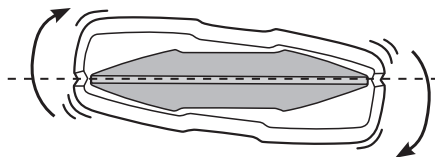
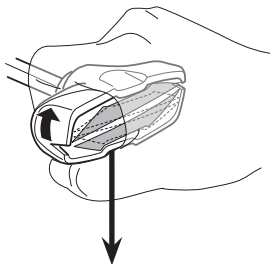
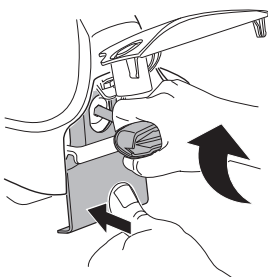
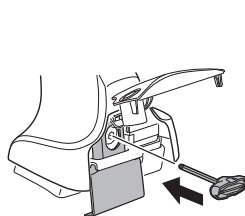
**CZ** Pokręťta bagażnika dokręcaj dokręcaj naprzemiennie.  
**SK** Dofahajte striedavo  
**SLO** Privijajte izmenično.  
**HR** Naizmjenočno zategnite  
**HU** Egymástól függetlenül szorítandó  
**GR** Σφιγγετε εναλλάξ  
**TR** Dönüşümlü sıkın

**中文** 交替拧紧

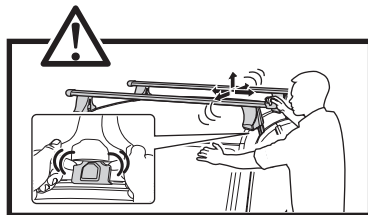
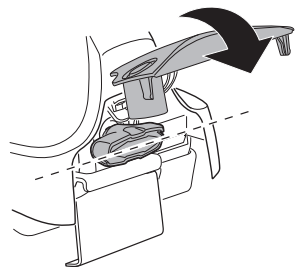
**한국어** 번갈아 가며 조이십시오.

**日本語** 交互に締め付けてください。

**ไทย** ชันในแบบสลับ



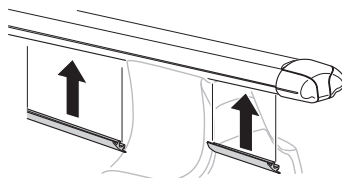
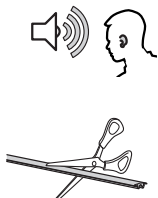
≈ 3 Nm

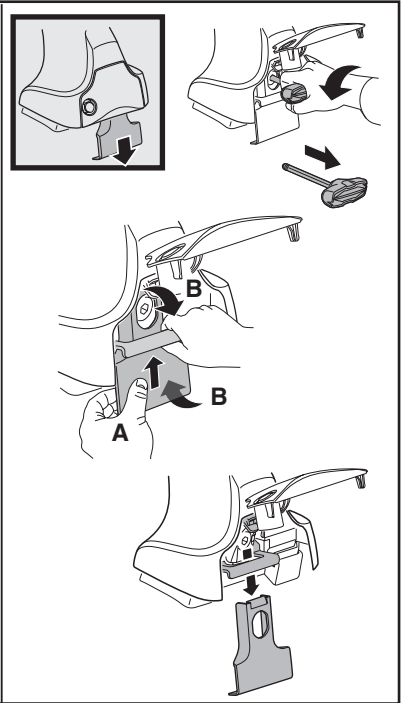
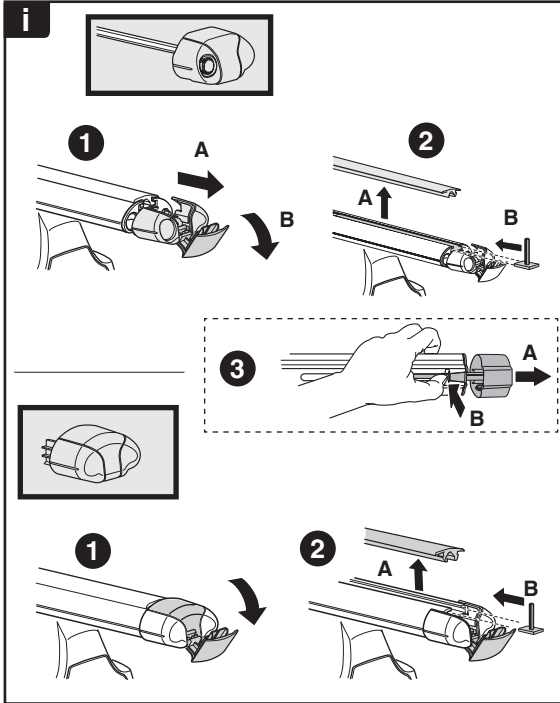
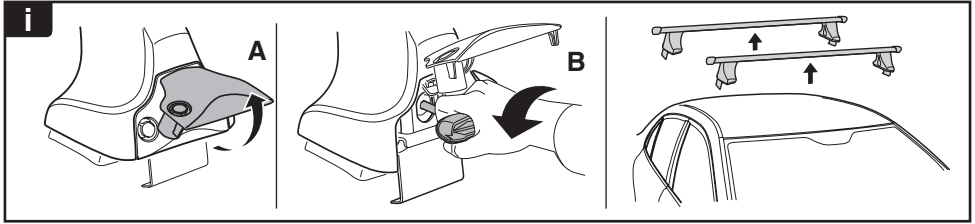


8

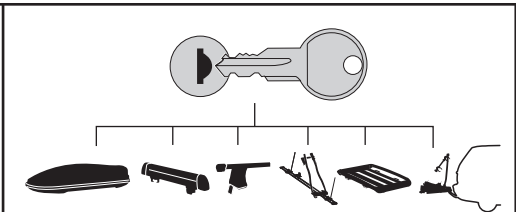


x1  
17 mm

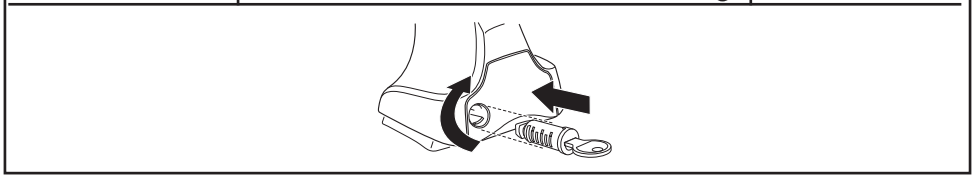




**THULE**  
SWEDEN  
**ONE  
KEY  
SYSTEM**



- 544** (x4)
  - 596** (x6)
  - 588** (x8)
  - 510** (x10)
  - 452** (x12)
- NA  
EUR  
ASIA



**WW** ▶ Thule Sweden AB, Box 69, 330 33 Hillerstorp, SWEDEN  
**NA** ▶ Thule Inc., 42 Silvermine Road, Seymour, Connecticut 06483, USA

info@thule.com  
 customer.service@thule.com

www.thule.com