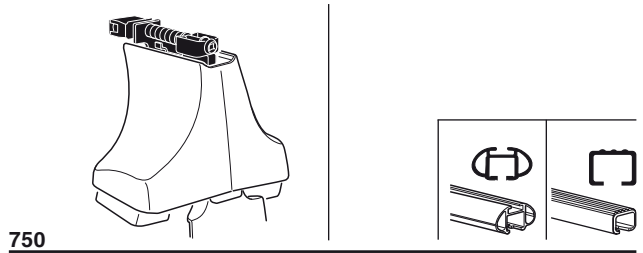
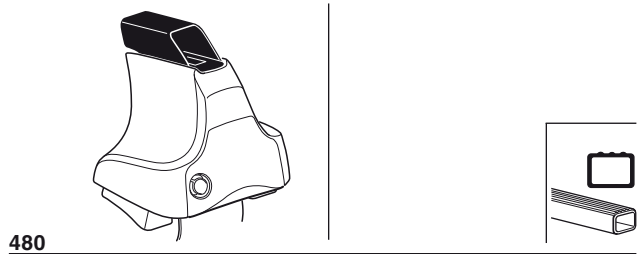
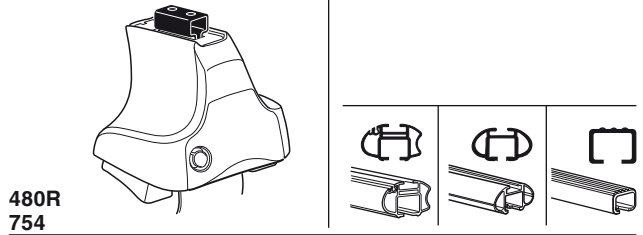


Kit 1467

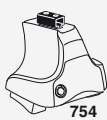
RENAULT Twingo (Mk.II.), 3-dr Hatchback, 07-



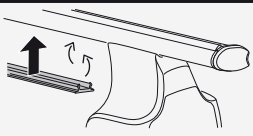
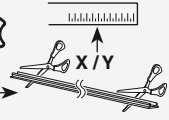
Kit



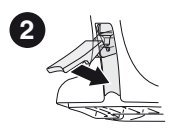
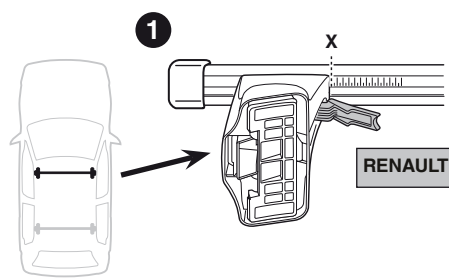
3



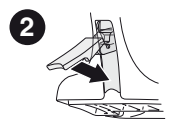
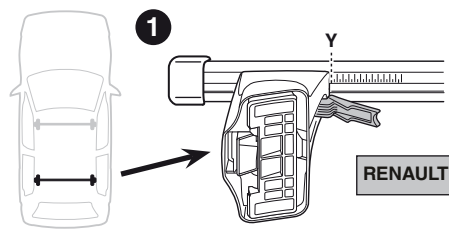
754



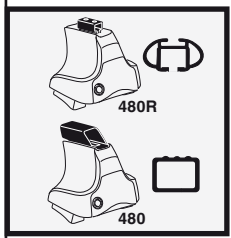
750



	X
RENAULT Twingo (Mk.II.), 3-dr Hatchback, 07-	31,5

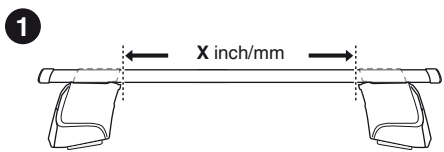
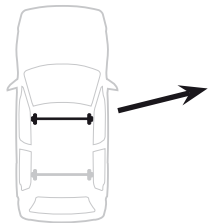


	Y
RENAULT Twingo (Mk.II.), 3-dr Hatchback, 07-	27

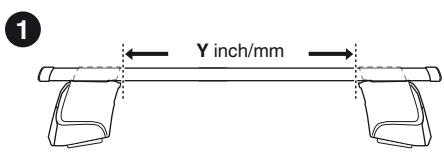
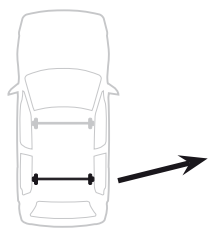


480R

480



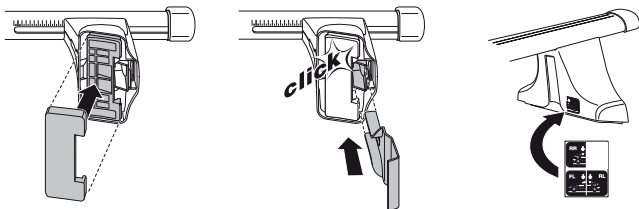
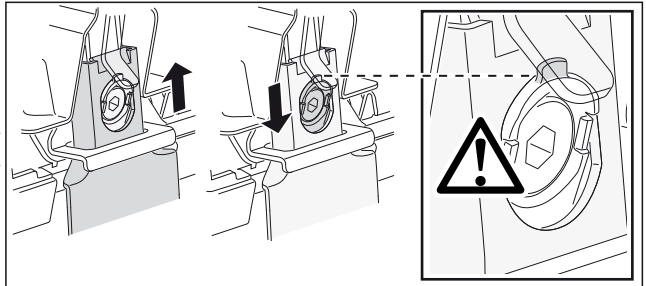
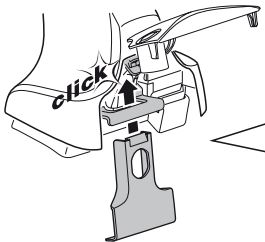
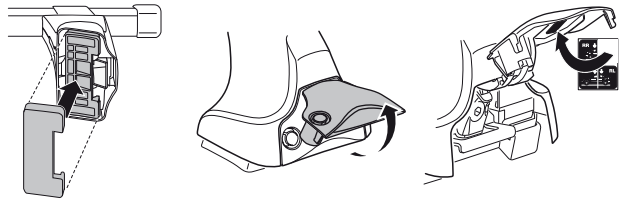
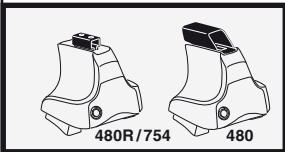
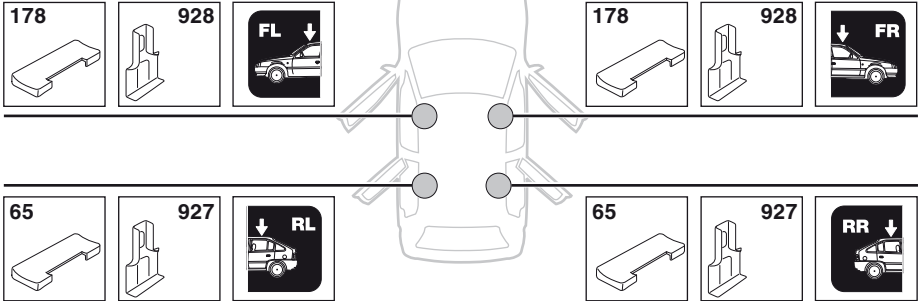
	X inch	X mm
RENAULT Twingo (Mk.II.), 3-dr Hatchback, 07-	38"	966 mm



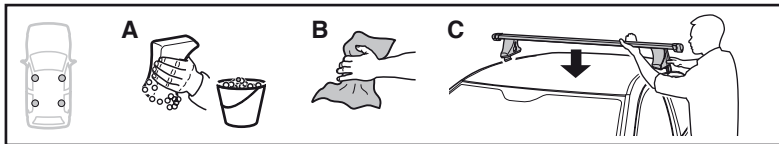
	Y inch	Y mm
RENAULT Twingo (Mk.II.), 3-dr Hatchback, 07-	36 1/4"	921 mm

4

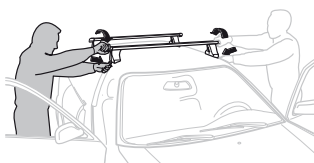
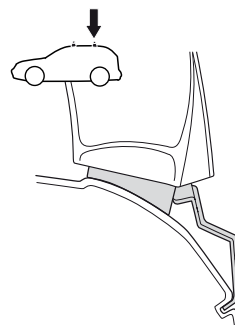
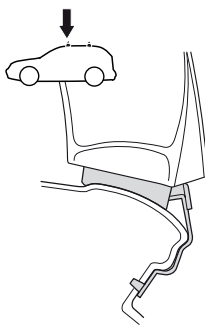
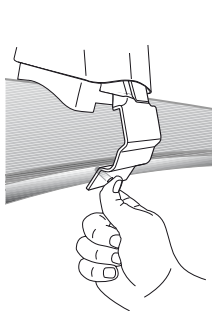
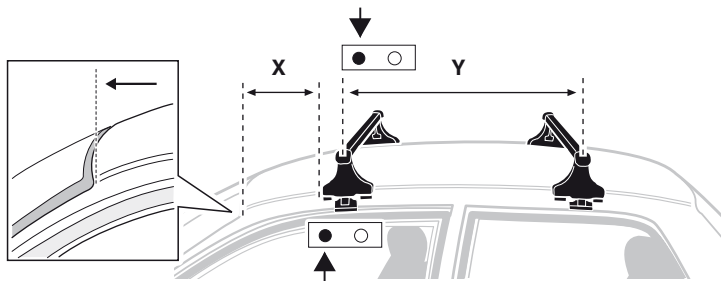
RENAULT Twingo (Mk.II.), 3-dr Hatchback, 07-



5



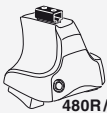
	X mm	Y mm	X inch	Y inch
RENAULT Twingo (Mk.II.), 3-dr Hatchback, 07-	226 mm	650 mm	8 ⁷/₈ "	25 ⁵/₈ "



- GB/US** Tighten alternately
- D** Die Schrauben abwechselnd anziehen
- F** Serrer alternativement chaque côté
- NL** Afwisselend aan de linker- en de rechterkant aandraaien
- I** Alternare il serraggio delle viti
- E** Apretar alternativamente
- PT** Aperte alternadamente
- S** Dra åt växelvis
- FIN** Kierrä vuorotellen
- EST** Pinguldage vaheldumisi
- LAT** Pievelciēt pamišus
- LIT** Užsukinėkite pakaitomis
- PL** Śruby dokręcaj naprzemiennie
- RU** Затягивайте попеременно

- CZ** Pokręťta bagażnika dokręcaj dokręcaj naprzemiennie.
- SK** Dofahujte striedavo
- SLO** Privijajte izmenično.
- HR** Naizmjenično zategnite
- HU** Egymástól függetlenül szorítandó
- GR** Σφίγγετε εναλλάξ
- TR** Dönüşümlü sıkın
- 中文** 交替拧紧
- 한국어** 번갈아 가며 조이십시오.
- 日本語** 交互に締め付けてください。
- ไทย** ชั้้นในแบบสลับ

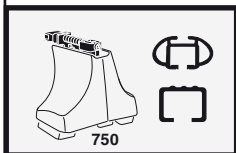
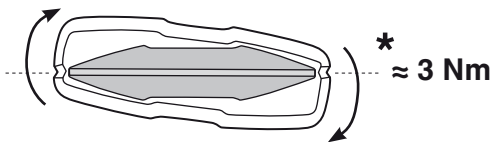
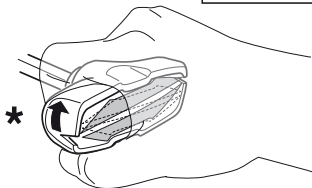
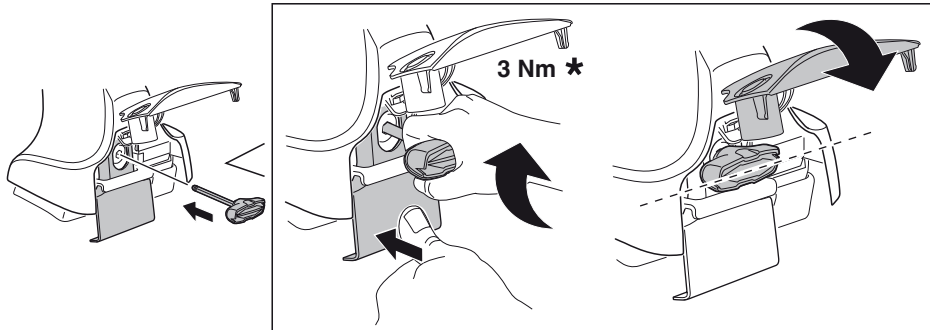
6



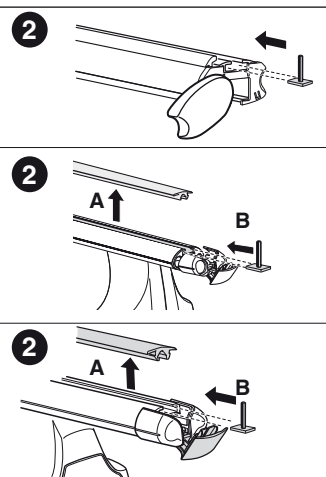
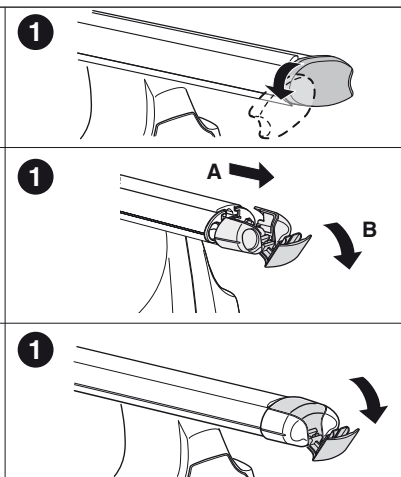
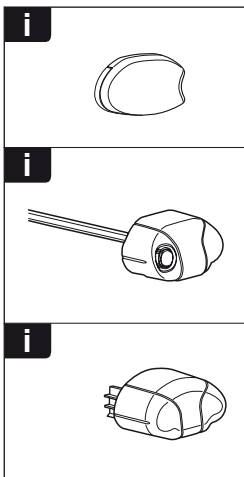
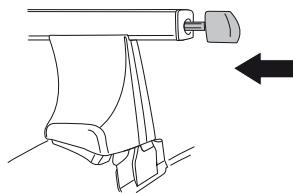
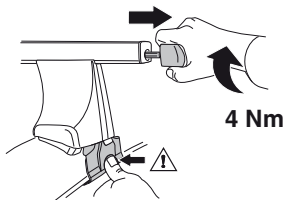
480R/754

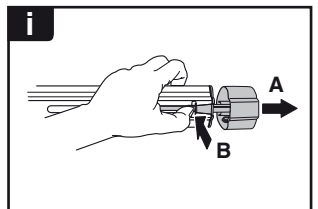
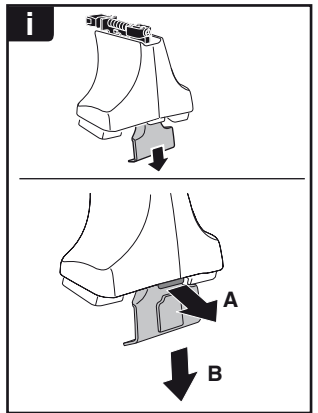


480



750





THULE
SWEDEN
**ONE
KEY
SYSTEM**



- 544 (x4)
- 596 (x6)
- 588 (x8)
- NA 510 (x10)
- EUR 452 (x12)
- ASIA



WW ▶ Thule Sweden AB, Box 69, 330 33 Hillerstorp, SWEDEN
NA ▶ Thule Inc., 42 Silvermine Road, Seymour, Connecticut 06483, USA

info@thule.com
customer.service@thule.com

www.thule.com