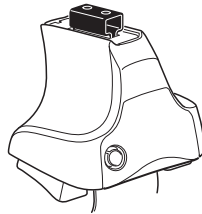


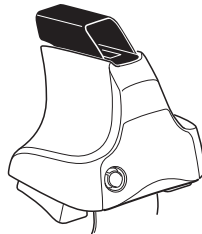
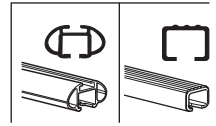
Kit 1654

HYUNDAI Avante, 4-dr Sedan, 11–
HYUNDAI Elantra, 4-dr Sedan, 11– / *12–

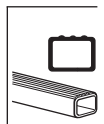
*North America



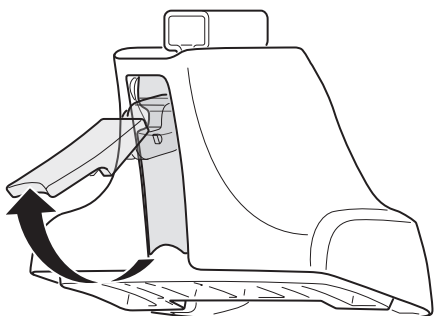
754 Rapid System
480R Rapid Traverse (North America)



480 Traverse (North America)



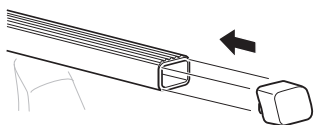
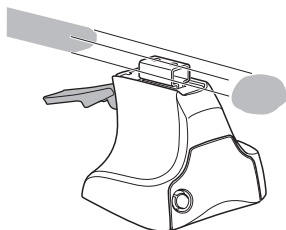
1



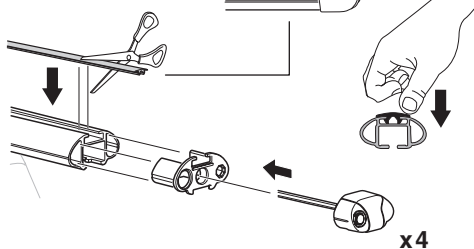
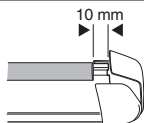
2



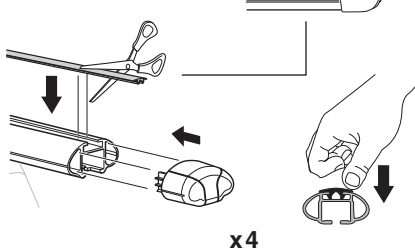
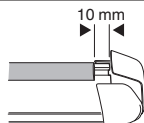
754 Rapid System
480R Rapid Traverse
(North America)



x4



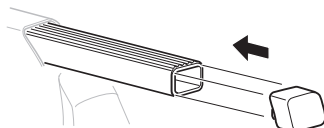
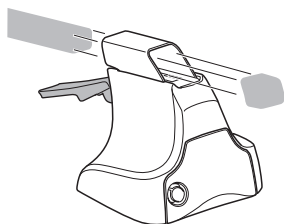
x4



x4

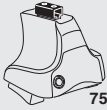


480 Traverse
(North America)

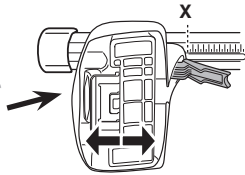


x4

3

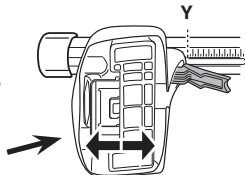


754 Rapid System



X

HYUNDAI Avante , 4-dr Sedan, 11-	43
HYUNDAI Elantra , 4-dr Sedan, 11- / *12-	43



Y

HYUNDAI Avante , 4-dr Sedan, 11-	42
HYUNDAI Elantra , 4-dr Sedan, 11- / *12-	42

3



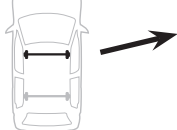
480R Rapid Traverse



480 Traverse

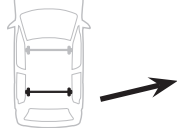


(North America)



X inch **X** mm

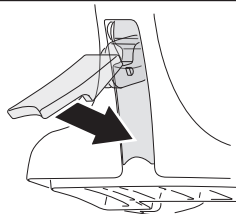
HYUNDAI Avante , 4-dr Sedan, 11-	42 1/2"	1081 mm
HYUNDAI Elantra , 4-dr Sedan, 11- / *12-	42 1/2"	1081 mm



Y inch **Y** mm

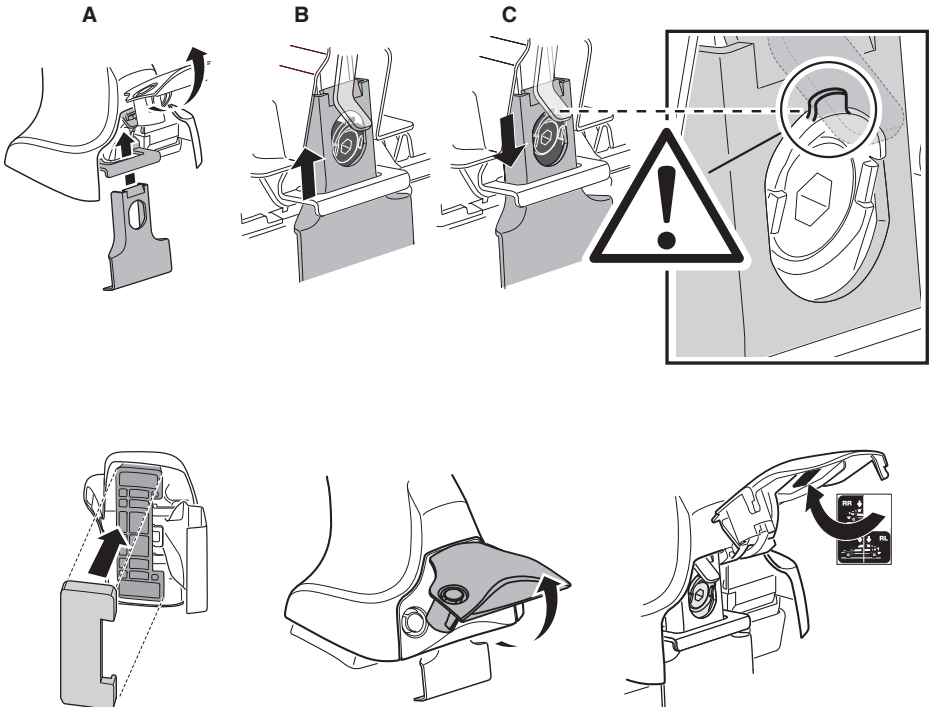
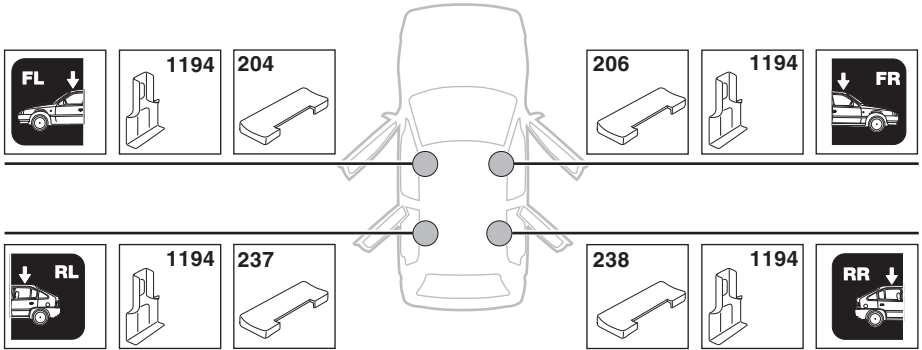
HYUNDAI Avante , 4-dr Sedan, 11-	42 1/8"	1071 mm
HYUNDAI Elantra , 4-dr Sedan, 11- / *12-	42 1/8"	1071 mm

4

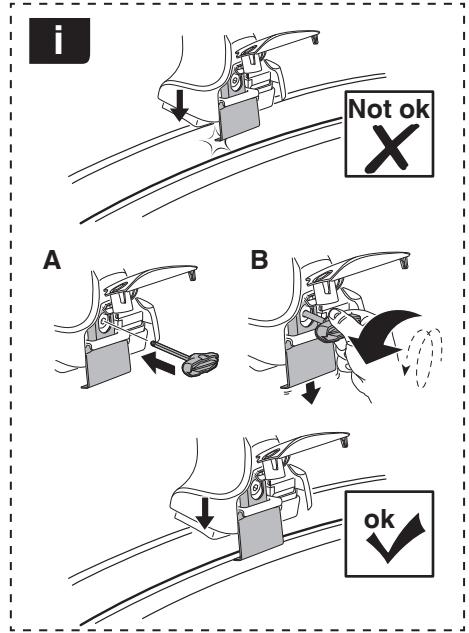
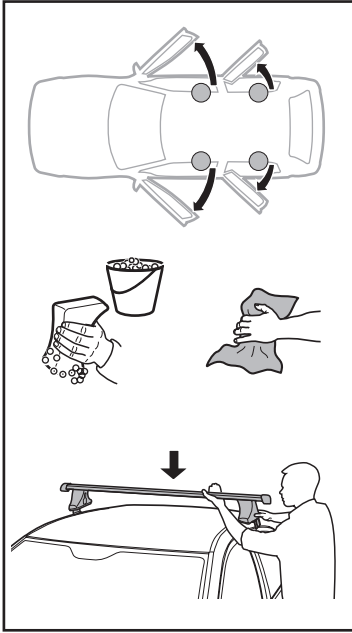


5

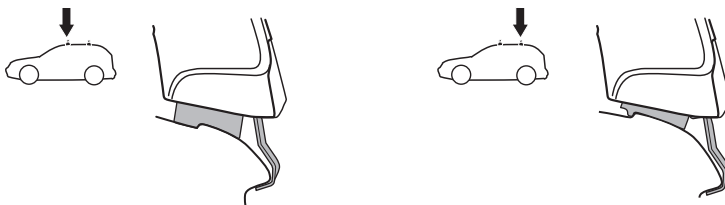
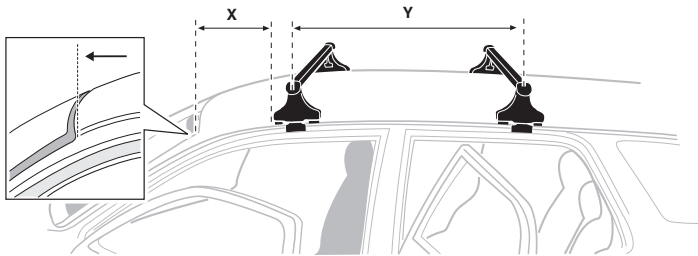
HYUNDAI Avante, 4-dr Sedan, 11-
HYUNDAI Elantra, 4-dr Sedan, 11- / *12-



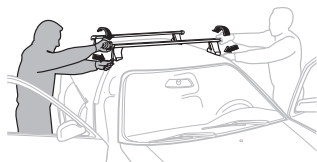
6



	X mm	Y mm	X inch	Y inch
HYUNDAI Avante, 4-dr Sedan, 11-	225 mm	685 mm	8 ⁷ / ₈ "	27 "
HYUNDAI Elantra, 4-dr Sedan, 11- / *12-	225 mm	685 mm	8 ⁷ / ₈ "	27 "



7



GB/US Tighten alternately
 D Die Schrauben abwechselnd anziehen
 F Serrer alternativement chaque côté
 NL Afwisselend aan de linker- en de rechterkant aandraaien
 I Alternare il serraggio delle viti
 E Apretar alternativamente
 PT Aperte alternadamente
 S Dra åt växelvis
 FIN Kierrä vuorotellen
 EST Pinguldage vaheldumisi
 LAT Pievelciēt pamīšus
 LIT Užsukinėkite pakaitomis
 PL Śruby dokręcaj naprzemiennie
 RU Затягивайте попеременно

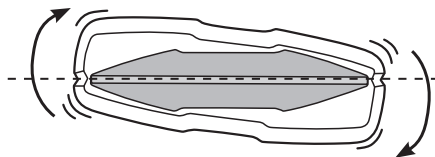
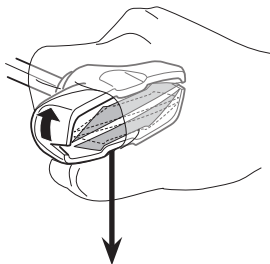
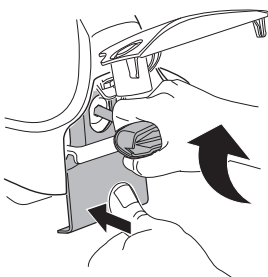
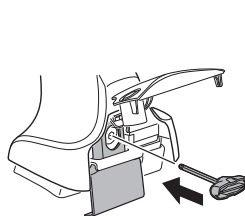
CZ Pokręťta bagażnika dokręcaj dokręcaj naprzemiennie.
 SK Dofahajte striedavo
 SLO Privijajte izmenično.
 HR Naizmjenočno zategnite
 HU Egymástól függetlenül szorítandó
 GR Σφιγγείτε εναλλάξ
 TR Dönüşümlü sıkın

中文 交替拧紧

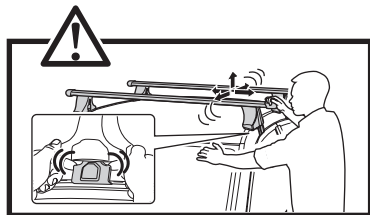
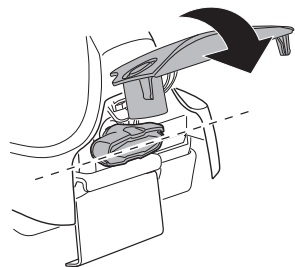
한국어 번갈아 가며 조이십시오.

日本語 交互に締め付けてください。

ไทย ชันในแบบสลับ



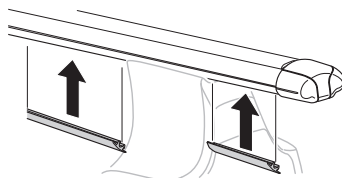
≈ 3 Nm

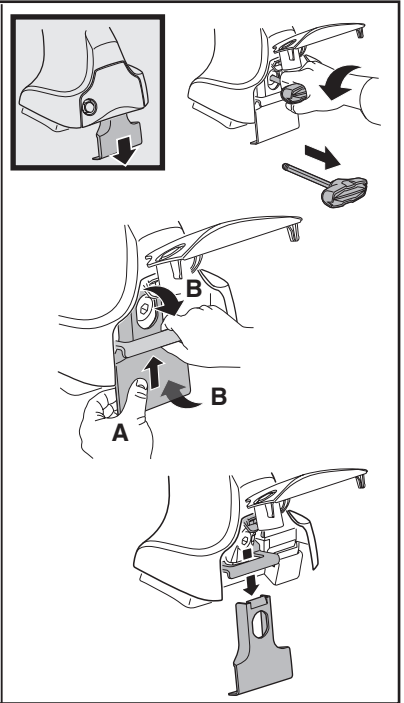
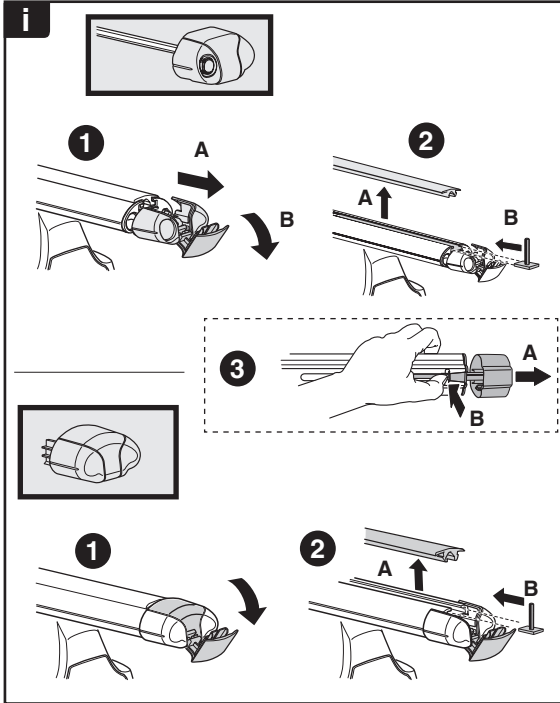
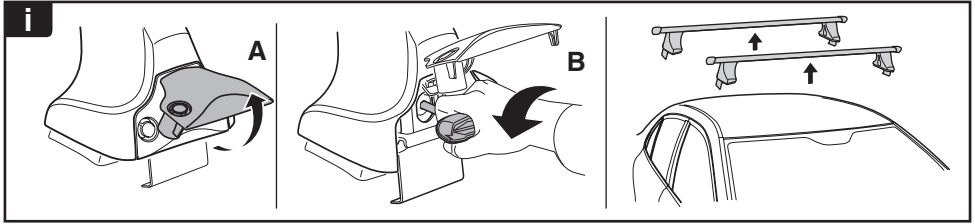


8

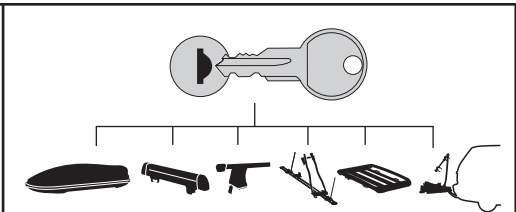


x1
17 mm

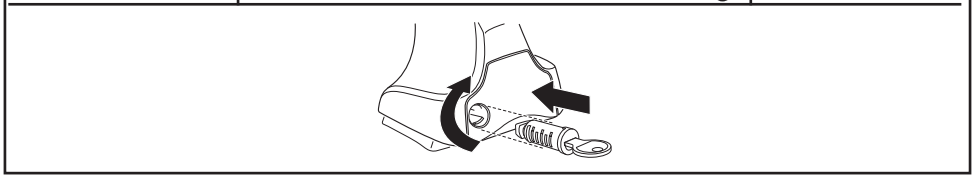




THULE
SWEDEN
**ONE
KEY
SYSTEM**



		(x4)
		(x6)
		(x8)
NA		(x10)
EUR		(x12)
ASIA		



WW ▶ Thule Sweden AB, Box 69, 330 33 Hillerstorp, SWEDEN
NA ▶ Thule Inc., 42 Silvermine Road, Seymour, Connecticut 06483, USA

info@thule.com
customer.service@thule.com

www.thule.com