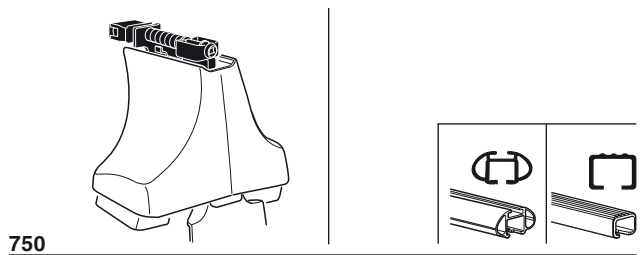
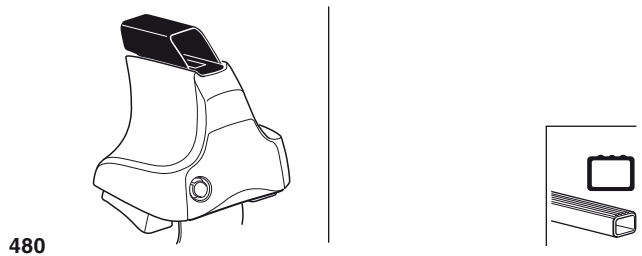
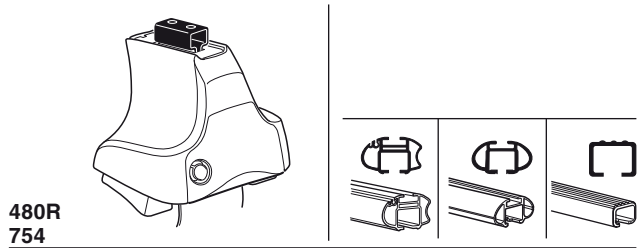


Kit 1463

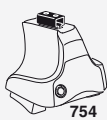
RENAULT Laguna III, 5-dr Liftback, 07-



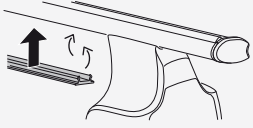
Kit



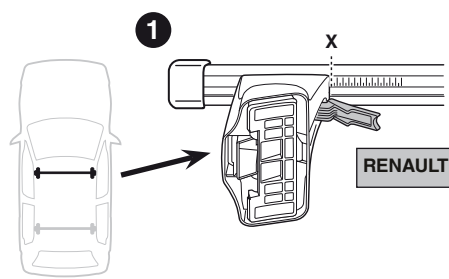
3



754



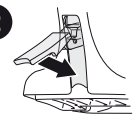
750



1

X

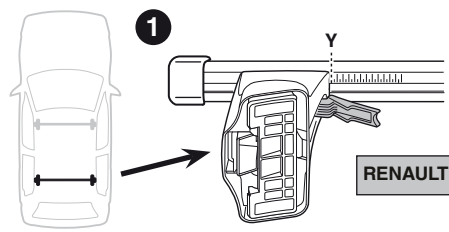
2



RENAULT Laguna III, 5-dr Liftback, 07-

X

37



1

Y

2



RENAULT Laguna III, 5-dr Liftback, 07-

Y

36,5

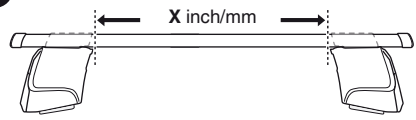


480R



480

1



X inch/mm

2



RENAULT Laguna III, 5-dr Liftback, 07-

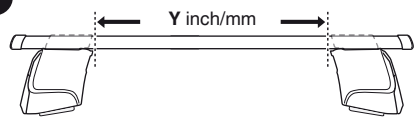
X inch

X mm

40 1/4"

1021 mm

1



Y inch/mm

2



RENAULT Laguna III, 5-dr Liftback, 07-

Y inch

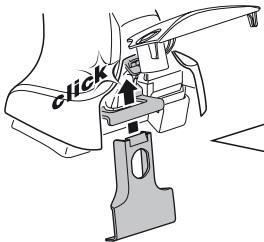
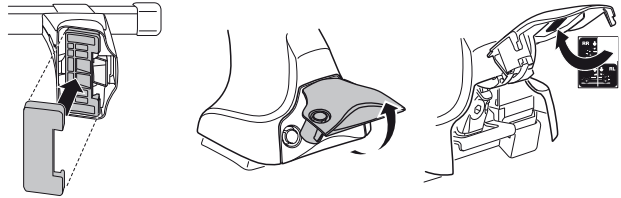
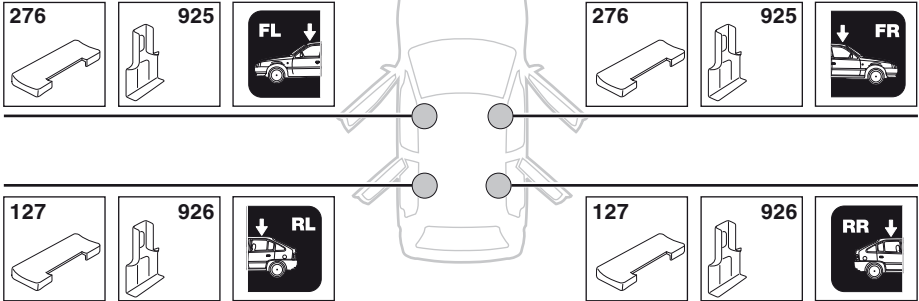
Y mm

40"

1016 mm

4

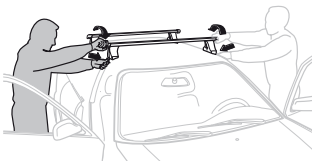
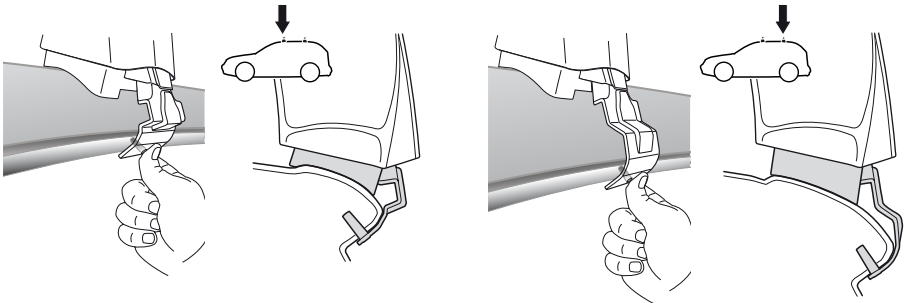
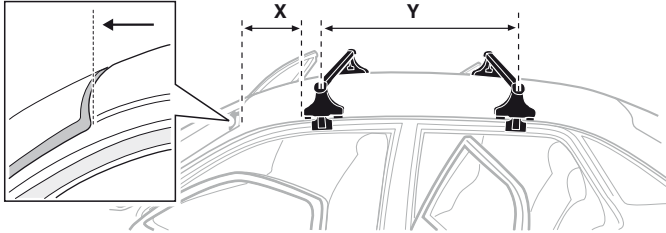
RENAULT Laguna III, 5-dr Liftback, 07-



5



| | X mm | Y mm | X inch | Y inch |
|--|--------|--------|--------|---------|
| RENAULT Laguna III, 5-dr Liftback, 07- | 242 mm | 758 mm | 9 1/2" | 29 7/8" |



- GB/US** Tighten alternately
D Die Schrauben abwechselnd anziehen
F Serrer alternativement chaque côté
NL Afwisselend aan de linker- en de rechterkant aandraaien
I Alternare il serraggio delle viti
E Apretar alternativamente
PT Aperte alternadamente
S Dra åt växelvis
FIN Kierrä vuorotellen
EST Pinguldage vaheldumisi
LAT Pievelciēt pamišus
LIT Užsukinėkite pakaitomis
PL Śruby dokręcaj naprzemiennie
RU Затягивайте попеременно

- CZ** Pokręťta bagażnika dokręcaj dokręcaj naprzemiennie.
SK Dotahujte striedavo
SLO Privijajte izmenično.
HR Naizmjenično zategnite
HU Egymástól függetlenül szorítandó
GR Σφίγγετε εναλλάξ
TR Dönüşümlü sıkın

中文 交替拧紧

한국어 번갈아 가며 조이십시오.

日本語 交互に締め付けてください。

ไทย ชับในแบบสลับ

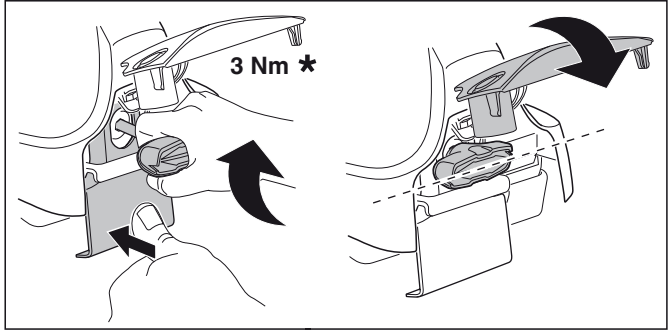
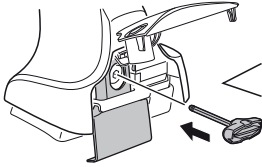
6



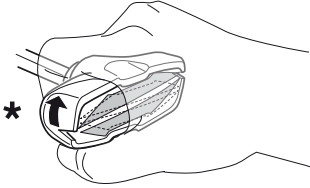
480R/754



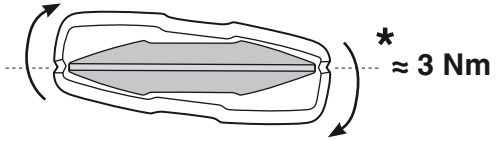
480



3 Nm *



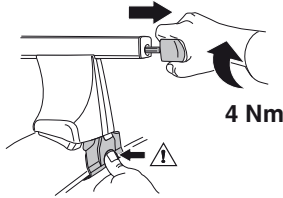
*



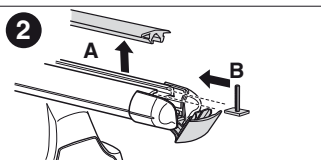
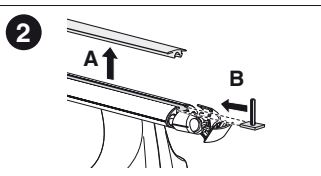
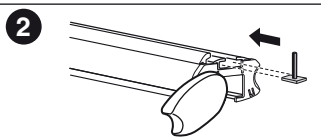
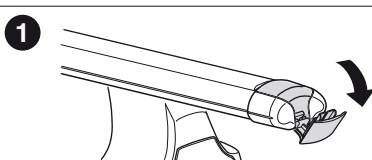
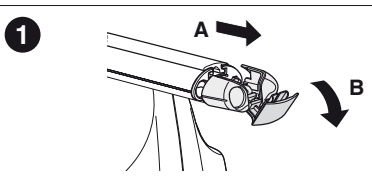
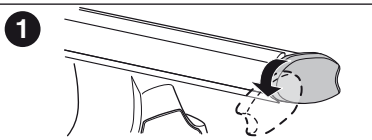
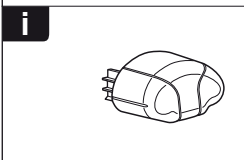
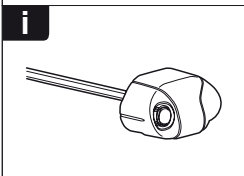
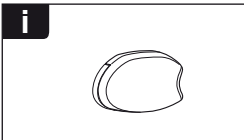
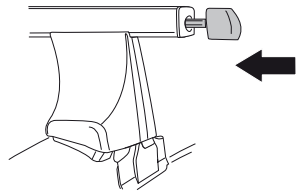
* ≈ 3 Nm

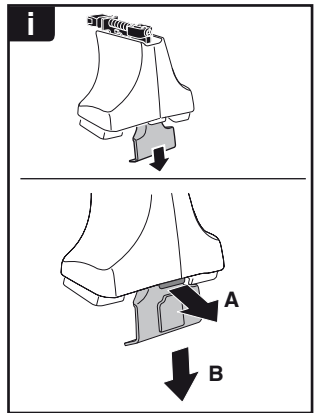
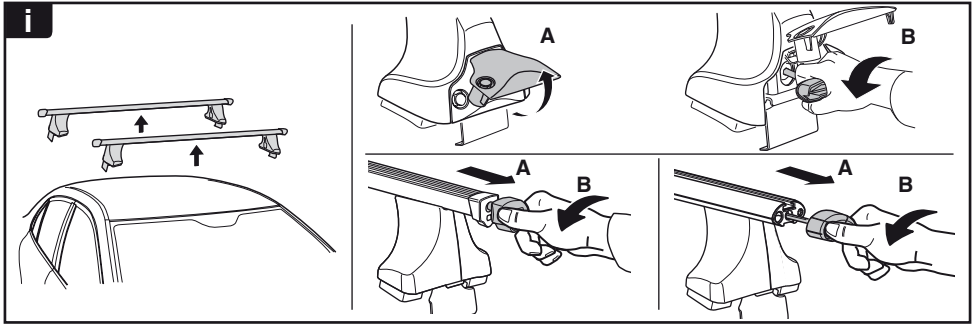


750



4 Nm





THULE
SWEDEN
**ONE
KEY
SYSTEM**



| | | | |
|------|--|------------|-------|
| | | 544 | (x4) |
| | | 596 | (x6) |
| | | 588 | (x8) |
| NA | | 510 | (x10) |
| EUR | | 452 | (x12) |
| ASIA | | | |



WW ▶ Thule Sweden AB, Box 69, 330 33 Hillerstorp, SWEDEN
NA ▶ Thule Inc., 42 Silvermine Road, Seymour, Connecticut 06483, USA

info@thule.com
customer.service@thule.com

www.thule.com