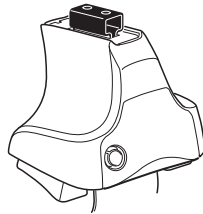
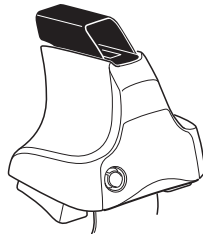
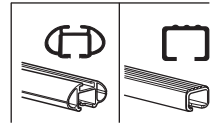


Kit 1660

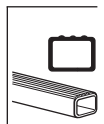
VOLKSWAGEN Beetle, 2-dr Coupé, 11-
VOLKSWAGEN Beetle, 3-dr Hatchback, 11-



754 Rapid System
480R Rapid Traverse (North America)



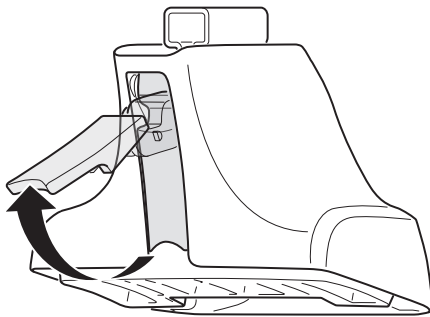
480 Traverse (North America)



- Bar (x2)
- Nut (x2)
- Washer (x2)
- Bolt (x4)
- Washer (x4)
- Bar (x2)
- Nut (x2)
- Washer (x2)
- Bolt (x2)
- Washer (x2)
- Bar (x2)
- Nut (x2)
- Washer (x2)
- Bolt (x2)
- Washer (x2)
- Bar (x2)
- Nut (x2)
- Washer (x2)
- Bolt (x2)
- Washer (x2)

- Bracket (1210) x2
- Bracket (1211) x2
- Plate (163) x1
- Plate (164) x1
- Plate (204) x1
- Plate (206) x1
- Directional Diagram (x1)

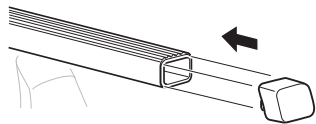
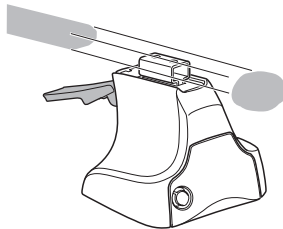
1



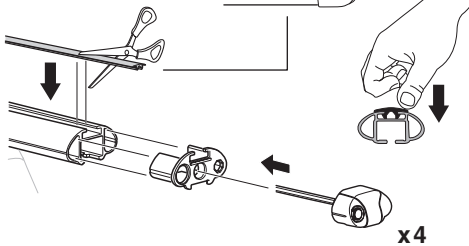
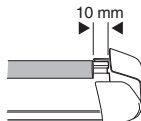
2



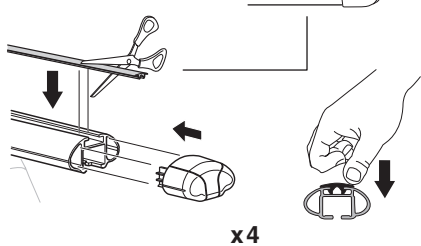
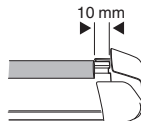
754 Rapid System
480R Rapid Traverse
(North America)



x4



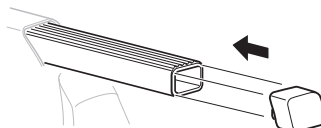
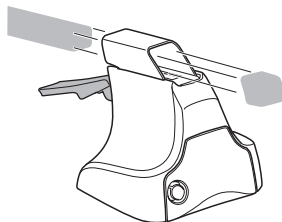
x4



x4

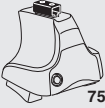


480 Traverse
(North America)

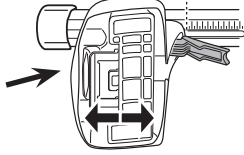


x4

3

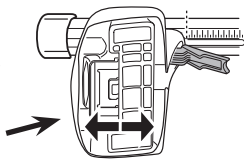


754 Rapid System



X

	X
VOLKSWAGEN Beetle, 2-dr Coupé, 11-	41
VOLKSWAGEN Beetle, 3-dr Hatchback, 11-	41



Y

	Y
VOLKSWAGEN Beetle, 2-dr Coupé, 11-	37,5
VOLKSWAGEN Beetle, 3-dr Hatchback, 11-	37,5

3



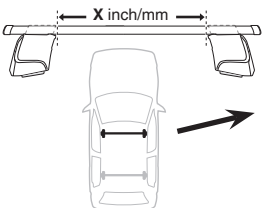
480R Rapid Traverse



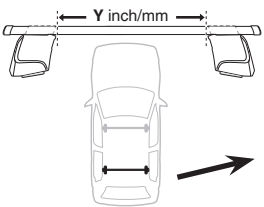
480 Traverse



(North America)

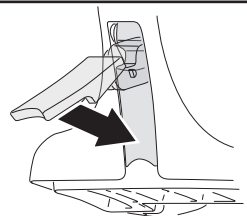


	X inch	X mm
VOLKSWAGEN Beetle, 2-dr Coupé, 11-	41 3/4"	1061 mm
VOLKSWAGEN Beetle, 3-dr Hatchback, 11-	41 3/4"	1061 mm



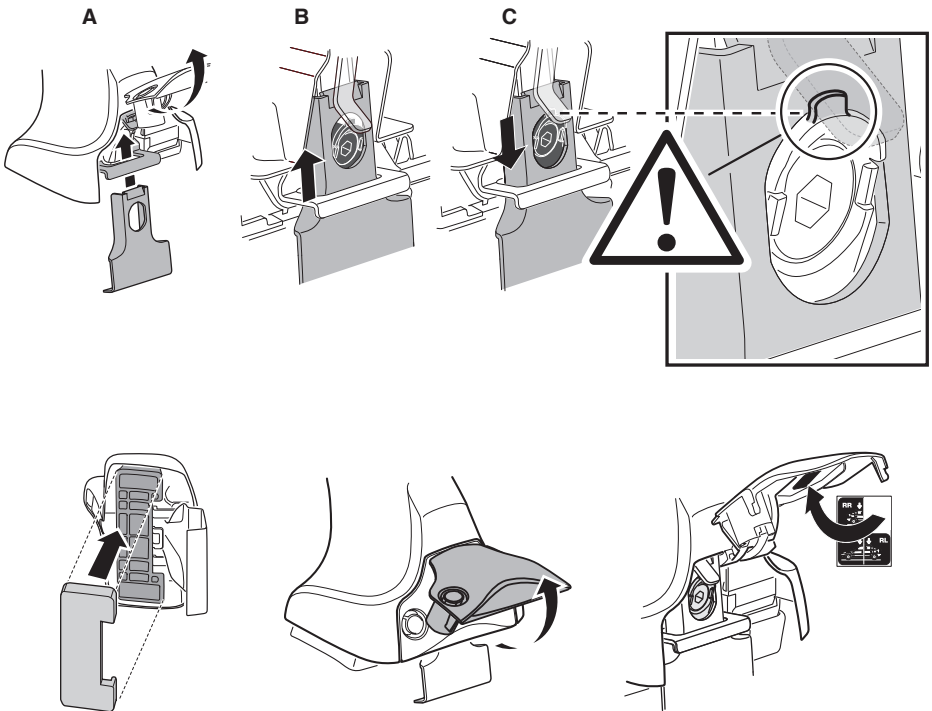
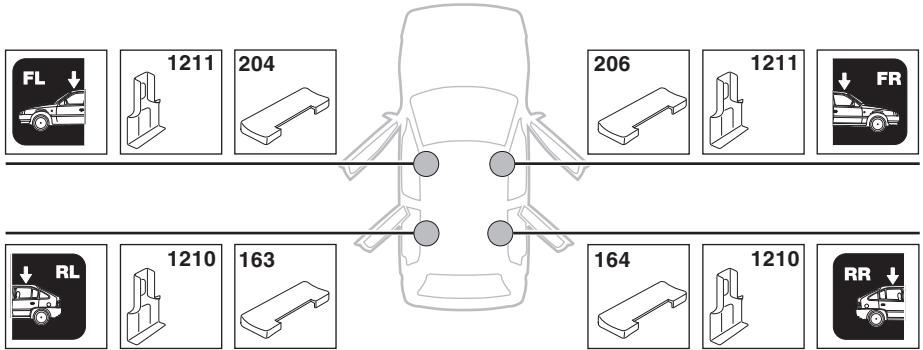
	Y inch	Y mm
VOLKSWAGEN Beetle, 2-dr Coupé, 11-	40 3/8"	1026 mm
VOLKSWAGEN Beetle, 3-dr Hatchback, 11-	40 3/8"	1026 mm

4

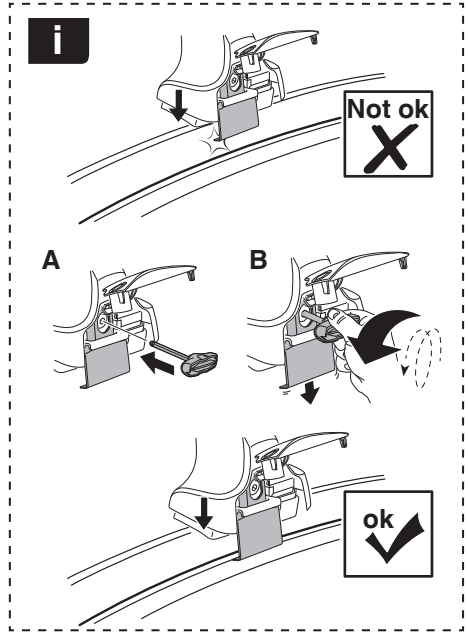
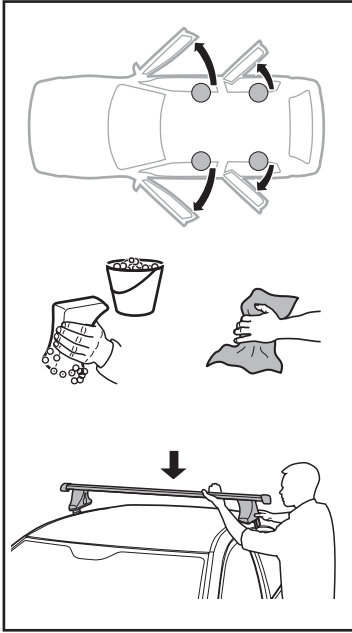


5

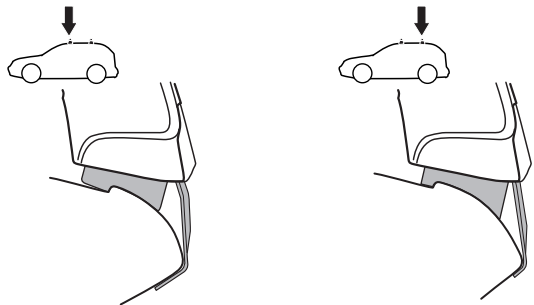
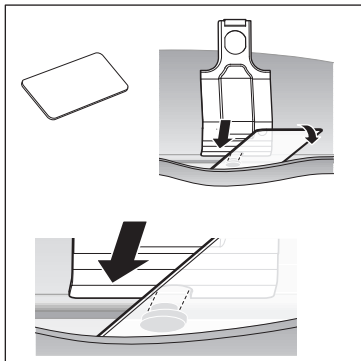
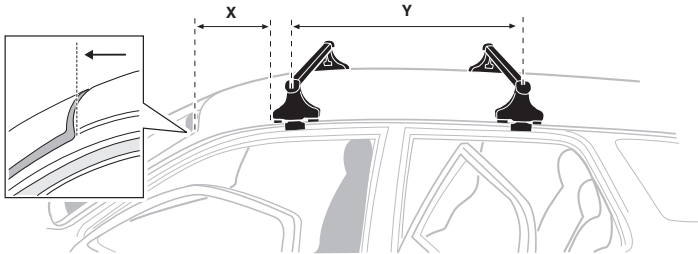
VOLKSWAGEN Beetle, 2-dr Coupé, 11-
VOLKSWAGEN Beetle, 3-dr Hatchback, 11-



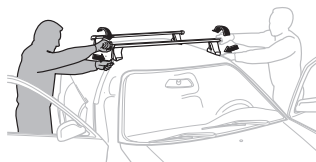
6



	X mm	Y mm	X inch	Y inch
VOLKSWAGEN Beetle, 2-dr Coupé, 11-	160 mm	600 mm	6 1/4"	23 5/8"
VOLKSWAGEN Beetle, 3-dr Hatchback, 11-	160 mm	600 mm	6 1/4"	23 5/8"



7



GB/US Tighten alternately
 D Die Schrauben abwechselnd anziehen
 F Serrer alternativement chaque côté
 NL Afwisselend aan de linker- en de rechterkant aandraaien
 I Alternare il serraggio delle viti
 E Apretar alternativamente
 PT Aperte alternadamente
 S Dra åt växelvis
 FIN Kierrä vuorotellen
 EST Pinguldage vaheldumisi
 LAT Pieļieciet pamišus
 LIT Užsukinėkite pakaitomis
 PL Śruby dokręcaj naprzemiennie
 RU Затягивайте попеременно

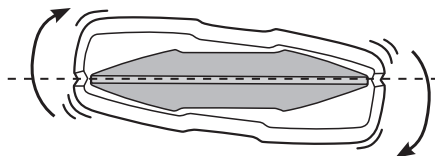
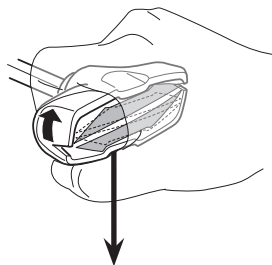
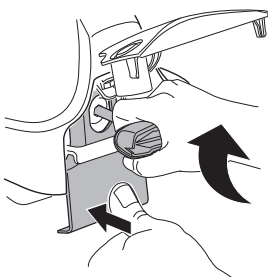
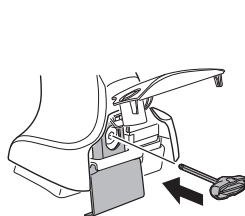
CZ Pokręťta bagażnika dokręcaj dokręcaj naprzemiennie.
 SK Dofahajte striedavo
 SLO Privijajte izmenično.
 HR Naizmjerno zategnite
 HU Egymástól függetlenül szorítandó
 GR Σφιγγείτε εναλλάξ
 TR Dönüşümlü sıkın

中文 交替拧紧

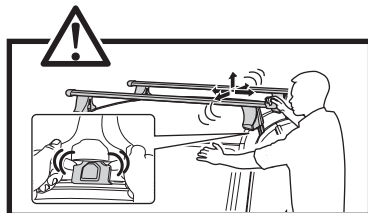
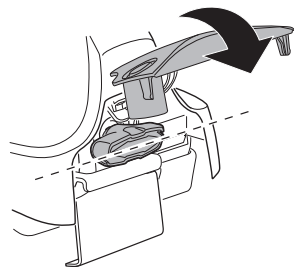
한국어 번갈아 가며 조이십시오.

日本語 交互に締め付けてください。

ไทย ขึ้นในแบบสลับ



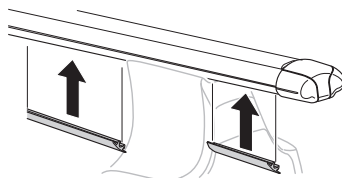
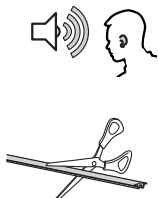
≈ 3 Nm

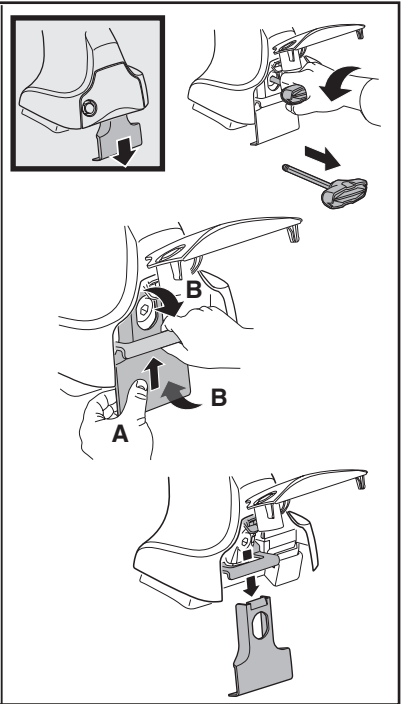
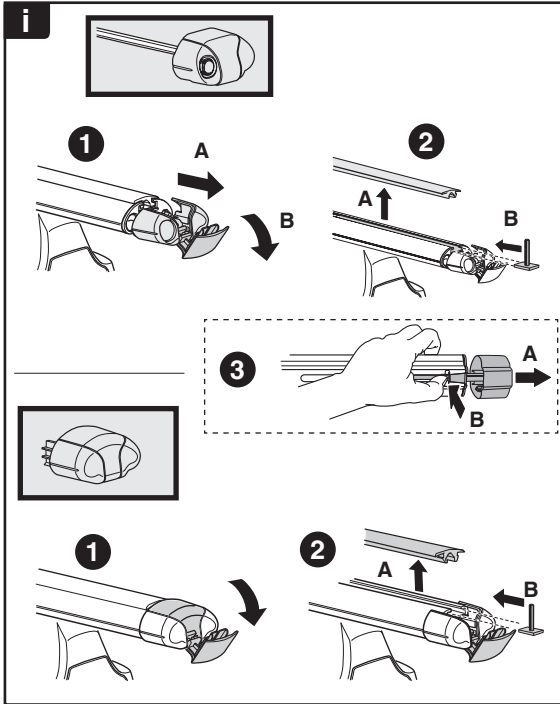
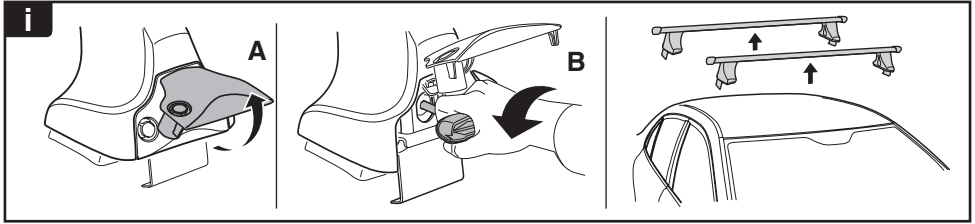


8

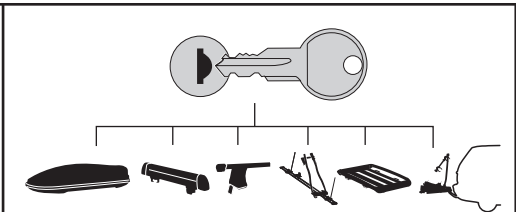


x1
17 mm

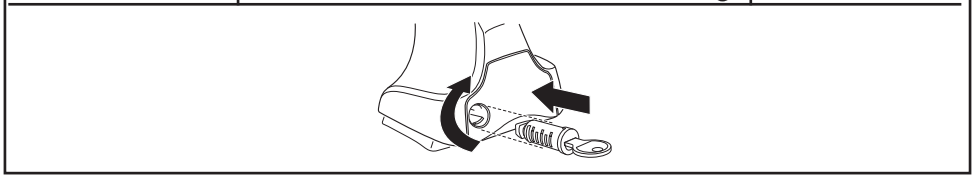




THULE
SWEDEN
**ONE
KEY
SYSTEM**



		(x4)
		(x6)
		(x8)
NA		(x10)
EUR		(x12)
ASIA		



WW ▶ Thule Sweden AB, Box 69, 330 33 Hillerstorp, SWEDEN
NA ▶ Thule Inc., 42 Silvermine Road, Seymour, Connecticut 06483, USA

info@thule.com
customer.service@thule.com

www.thule.com