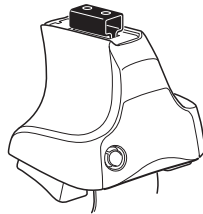
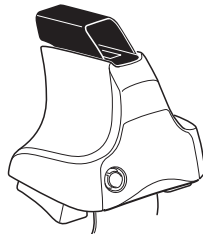
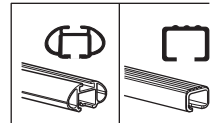


Kit 1540

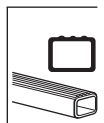
CHEVROLET Malibu, 4-dr Sedan, 08-12
SATURN Aura, 4-dr Sedan, 08-10



754 Rapid System
480R Rapid Traverse (North America)



480 Traverse (North America)



754 Rapid System

480R Rapid Traverse (North America)

754 Rapid System

480R Rapid Traverse (North America)

480 Traverse (North America)

(North America)

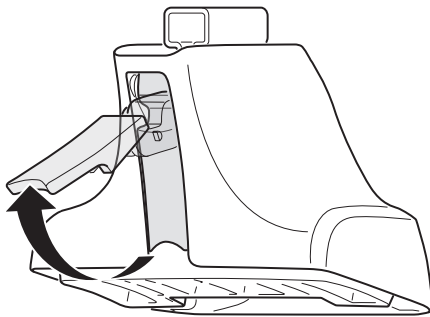
591 x4

163 x2

164 x2

x1

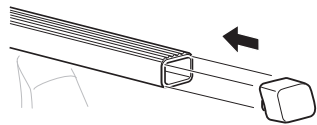
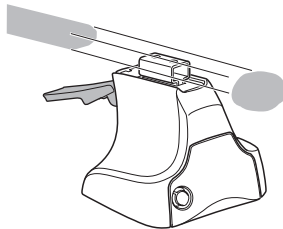
1



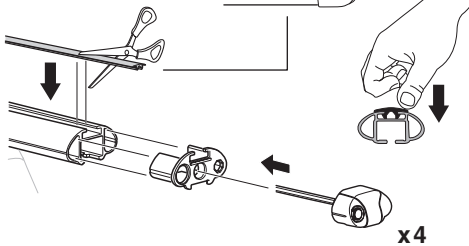
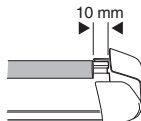
2



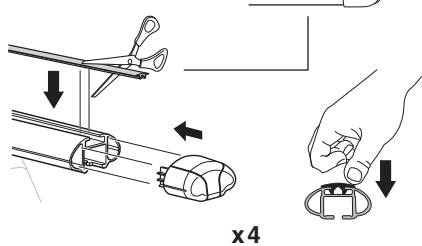
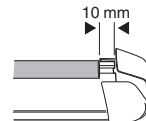
754 Rapid System
480R Rapid Traverse
(North America)



x4



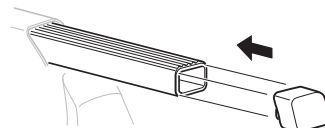
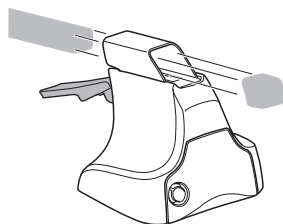
x4



x4

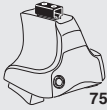


480 Traverse
(North America)

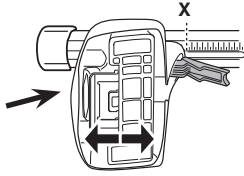


x4

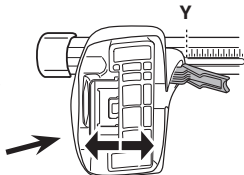
3



754 Rapid System



	X
CHEVROLET Malibu, 4-dr Sedan, 08-12	38
SATURN Aura, 4-dr Sedan, 08-10	38



	Y
CHEVROLET Malibu, 4-dr Sedan, 08-12	34,5
SATURN Aura, 4-dr Sedan, 08-10	34,5

3



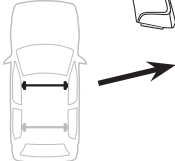
480R Rapid Traverse



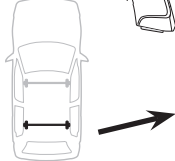
480 Traverse



(North America)

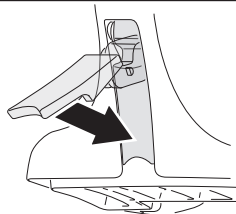


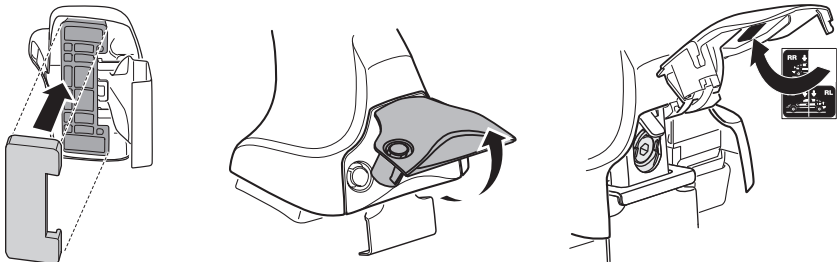
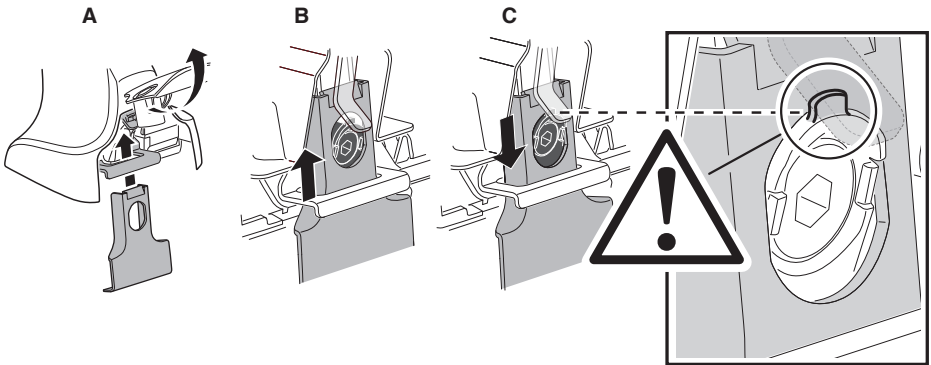
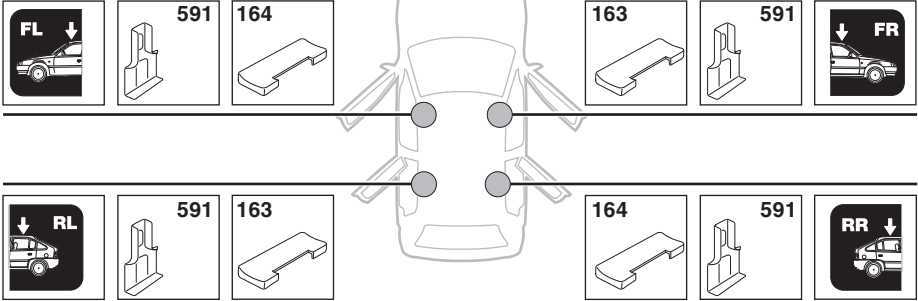
	X inch	X mm
CHEVROLET Malibu, 4-dr Sedan, 08-12	40 1/2"	1030 mm
SATURN Aura, 4-dr Sedan, 08-10	40 1/2"	1030 mm



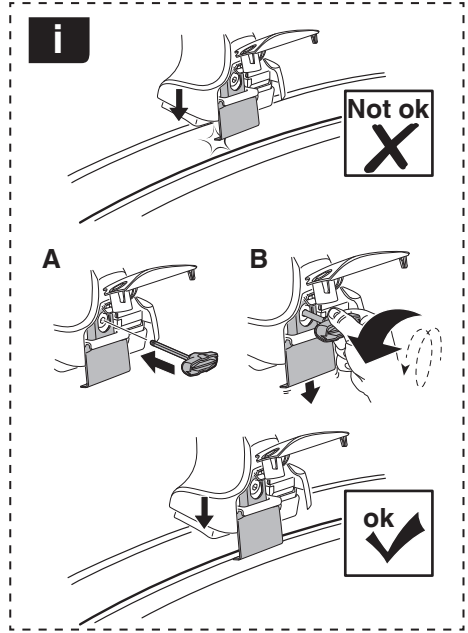
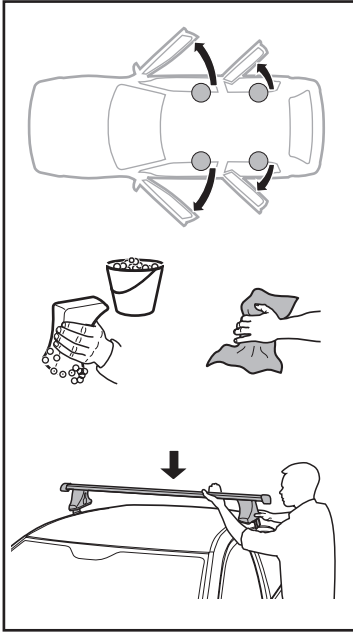
	Y inch	Y mm
CHEVROLET Malibu, 4-dr Sedan, 08-12	39 3/4"	1009 mm
SATURN Aura, 4-dr Sedan, 08-10	39 3/4"	1009 mm

4

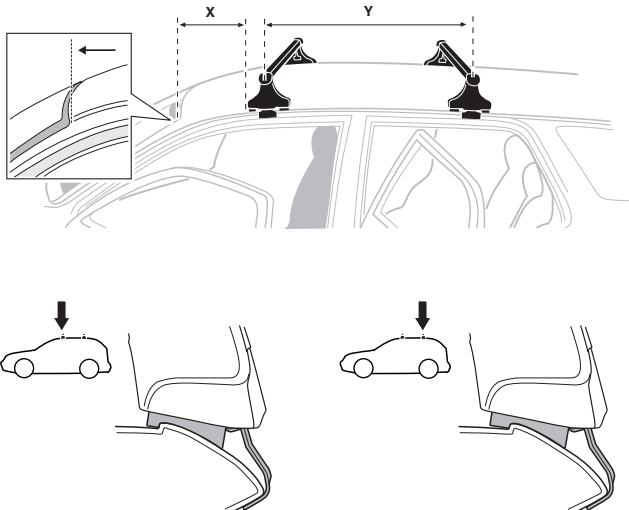


5**CHEVROLET Malibu, 4-dr Sedan, 08-12**
SATURN Aura, 4-dr Sedan, 08-10

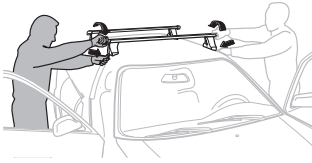
6



	X mm	Y mm	X inch	Y inch
CHEVROLET Malibu, 4-dr Sedan, 08-12	230 mm	673 mm	9"	26 1/2"
SATURN Aura, 4-dr Sedan, 08-10	230 mm	673 mm	9"	26 1/2"



7



GB/US Tighten alternately
D Die Schrauben abwechselnd anziehen
F Serrer alternativement chaque côté
NL Afwisselend aan de linker- en de rechterkant aandraaien
I Alternare il serraggio delle viti
E Apertar alternativamente
PT Aperte alternadamente
S Dra åt växelvis
FIN Kierrä vuorotellen
EST Pinguldage vaheldumisi
LAT Pielveiciet pamišus
LIT Užsukinėkite pakaitomis
PL Śruby dokręcaj naprzemiennie
RU Затягивайте попеременно

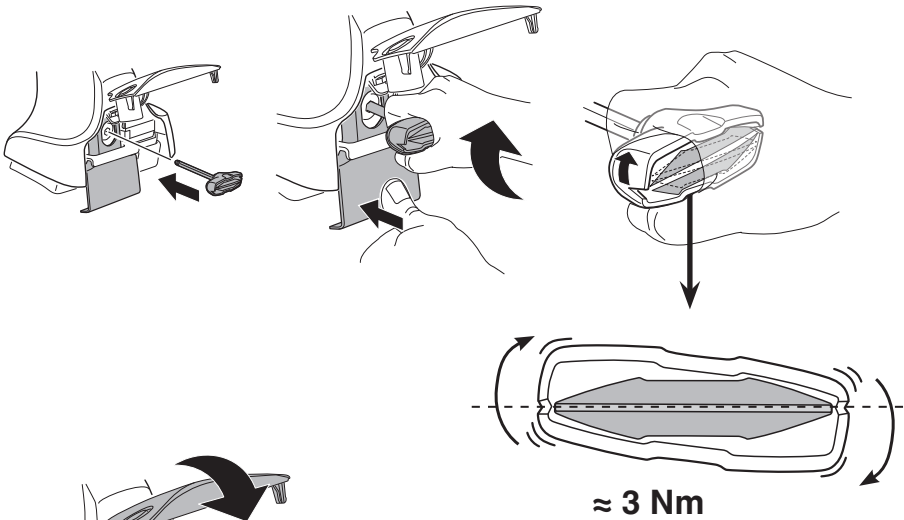
CZ Pokręťta bagażnika dokręcaj dokręcaj naprzemiennie.
SK Dofahajte striedavo
SLO Privijajte izmenično.
HR Naizmjenočno zategnite
HU Egymástól függetlenül szorítandó
GR Σφιγγείτε εναλλάξ
TR Dönüşümlü sıkın

中文 交替拧紧

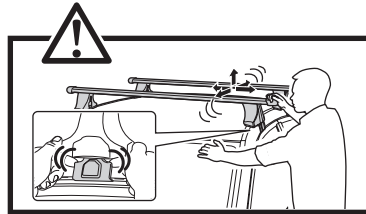
한국어 번갈아 가며 조이십시오.

日本語 交互に締め付けてください。

ไทย ชันในแบบสลับ



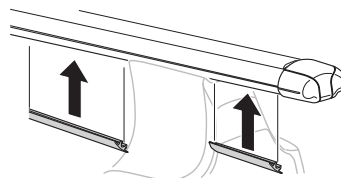
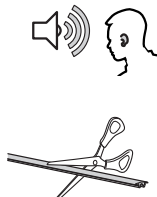
≈ 3 Nm

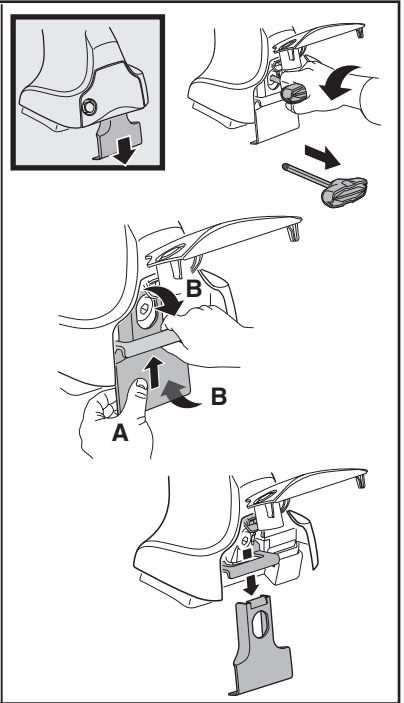
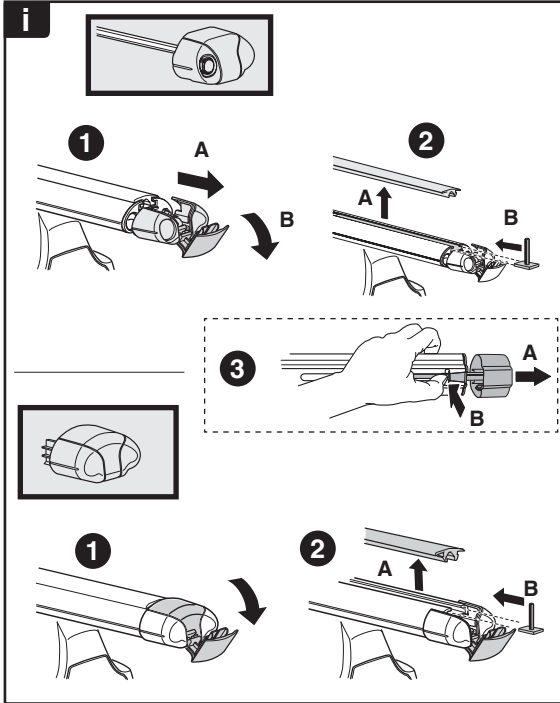
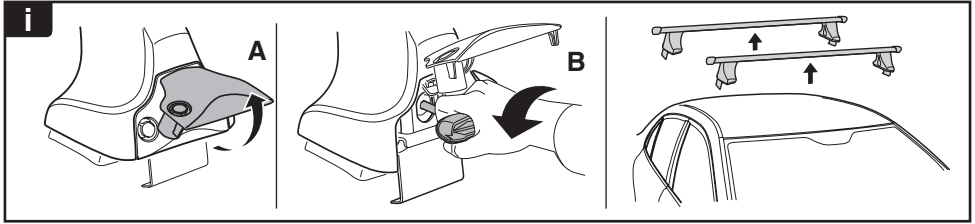


8

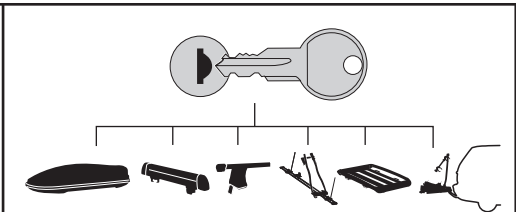


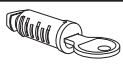




x1
17 mm

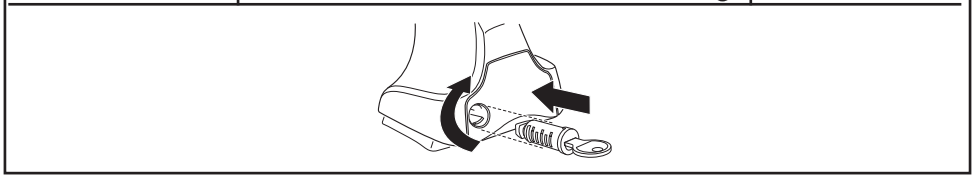




THULE
SWEDEN
**ONE
KEY
SYSTEM**



-  **544** (x4)
 -  **596** (x6)
 -  **588** (x8)
 -  **510** (x10)
 -  **452** (x12)
- NA
EUR
ASIA



WW ▶ Thule Sweden AB, Box 69, 330 33 Hillerstorp, SWEDEN
NA ▶ Thule Inc., 42 Silvermine Road, Seymour, Connecticut 06483, USA

info@thule.com
customer.service@thule.com

 www.thule.com