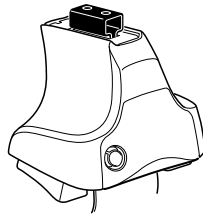
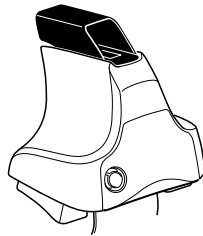
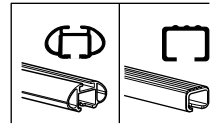


Kit 1634

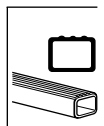
FORD Focus, 4-dr Sedan, 11-
FORD Focus, 5-dr Hatchback, 11-
FORD Focus, 5-dr Estate, 11- (Without railing)



754 Rapid System
480R Rapid Traverse (North America)



480 Traverse (North America)



**Max.
75 kg**
**Max.
165 lbs**

**km/h
Mph**

THULE
Kit XXXX
instructions
THULE

x1

754 Rapid System
x4

480R Rapid Traverse (North America)
x4

x4

754 Rapid System
480R Rapid Traverse (North America)

x1

480 Traverse (North America)
x4

x4

x2

x2
23 mm

x2
23 mm

x4

x4

x1
17 mm

x2
23 mm

x2

x2

x2

x2

x2

(North America)

x2

x2

1165 x2

1166 x2

313 x1

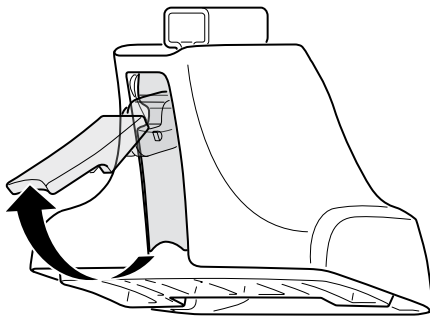
314 x1

348 x1

349 x1

x1

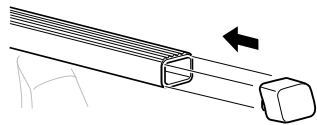
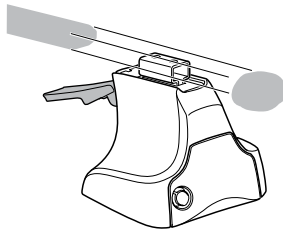
1



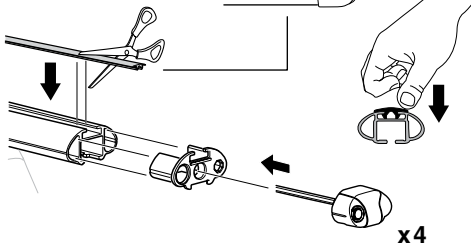
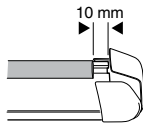
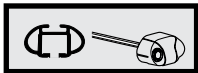
2



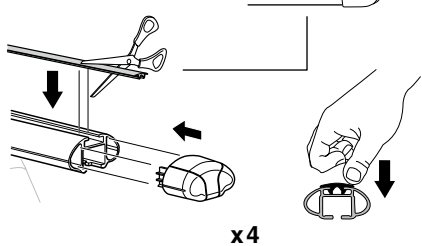
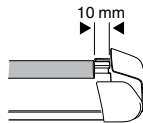
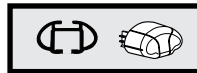
754 Rapid System
480R Rapid Traverse
(North America)



x4



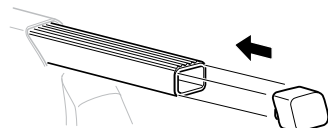
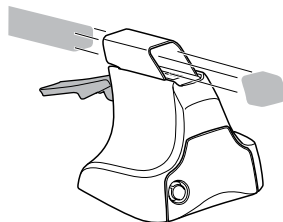
x4



x4

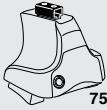


480 Traverse
(North America)

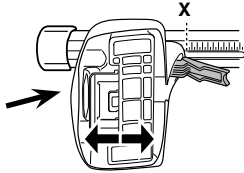


x4

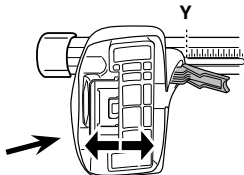
3



754 Rapid System



	X
FORD Focus, 4-dr Sedan, 11-	39
FORD Focus, 5-dr Hatchback, 11-	38,5
FORD Focus, 5-dr Estate, 11- (Without railing)	38



	Y
FORD Focus, 4-dr Sedan, 11-	37,5
FORD Focus, 5-dr Hatchback, 11-	36
FORD Focus, 5-dr Estate, 11- (Without railing)	34,5

3



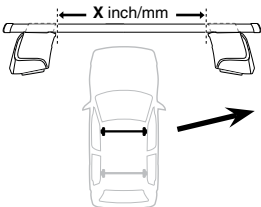
480R Rapid Traverse



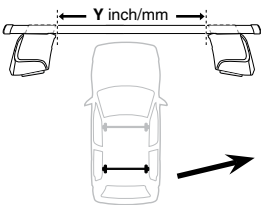
480 Traverse



(North America)

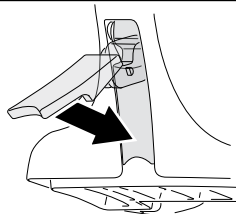


	X inch	X mm
FORD Focus, 4-dr Sedan, 11-	41"	1041 mm
FORD Focus, 5-dr Hatchback, 11-	40 3/8"	1036 mm
FORD Focus, 5-dr Estate, 11- (Without railing)	40 5/8"	1031 mm



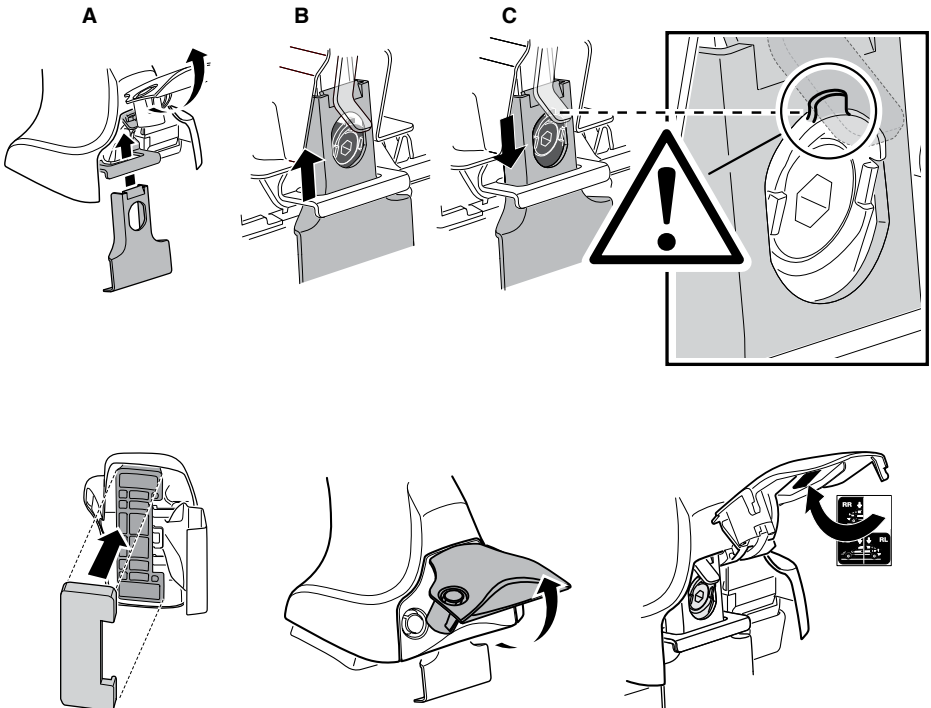
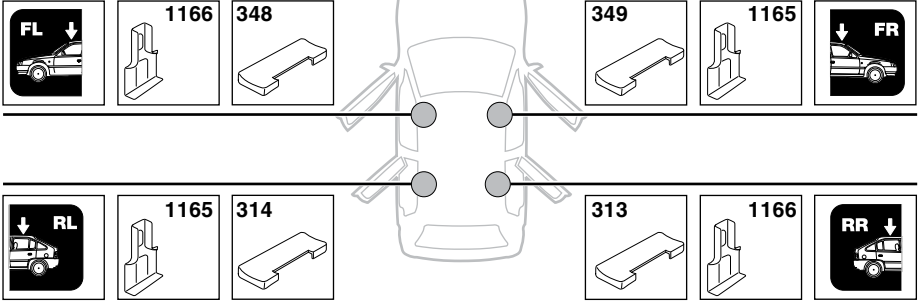
	Y inch	Y mm
FORD Focus, 4-dr Sedan, 11-	40 3/8"	1026 mm
FORD Focus, 5-dr Hatchback, 11-	39 3/4"	1011 mm
FORD Focus, 5-dr Estate, 11- (Without railing)	39 1/4"	996 mm

4

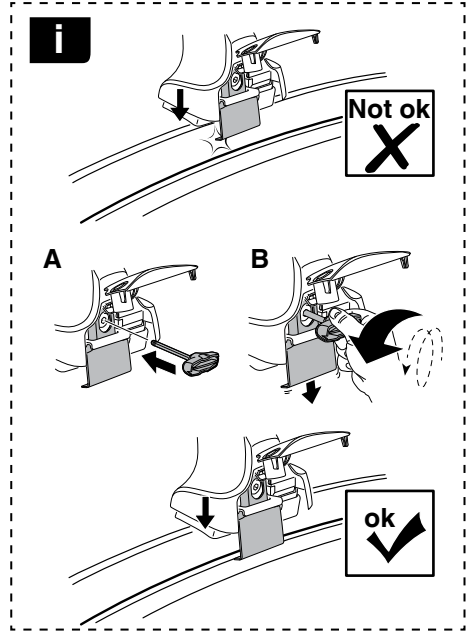
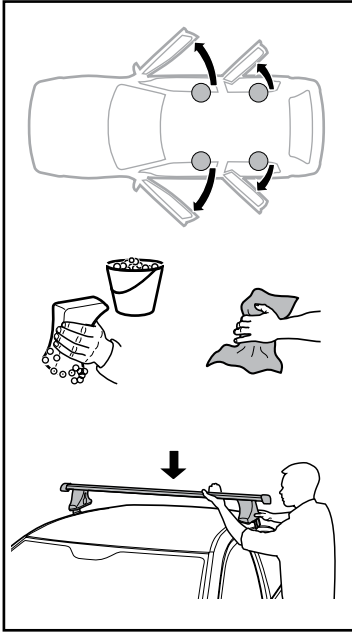


5

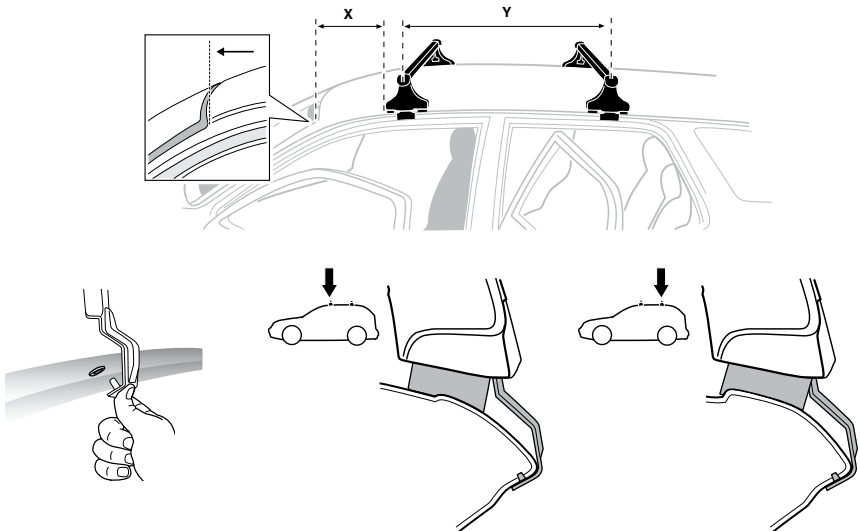
FORD Focus, 4-dr Sedan, 11-
FORD Focus, 5-dr Hatchback, 11-
FORD Focus, 5-dr Estate, 11- (Without railing)



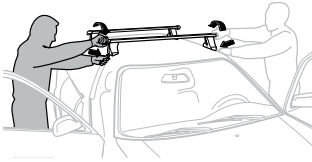
6



	X mm	Y mm	X inch	Y inch
FORD Focus, 4-dr Sedan, 11-	250 mm	770 mm	9 ⁷ / ₈ "	30 ³ / ₈ "
FORD Focus, 5-dr Hatchback, 11-	265 mm	760 mm	10 ³ / ₈ "	29 ⁷ / ₈ "
FORD Focus, 5-dr Estate, 11- (Without railing)	260 mm	760 mm	10 ¹ / ₄ "	29 ⁷ / ₈ "



7



GB/US	Tighten alternately
D	Die Schrauben abwechselnd anziehen
F	Serrer alternativement chaque côté
NL	Afwisselend aan de linker- en de rechterkant aandraaien
I	Alternare il serraggio delle viti
E	Apertar alternativamente
PT	Aperte alternadamente
S	Dra åt växelvis
FIN	Kierrä vuorotellen
EST	Pinguldage vaheldumisi
LAT	Pielveiciet pamišus
LIT	Užsukinėkite pakaitomis
PL	Śruby dokręcaj naprzemiennie
RU	Загряивайте попеременно

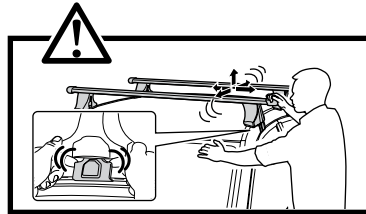
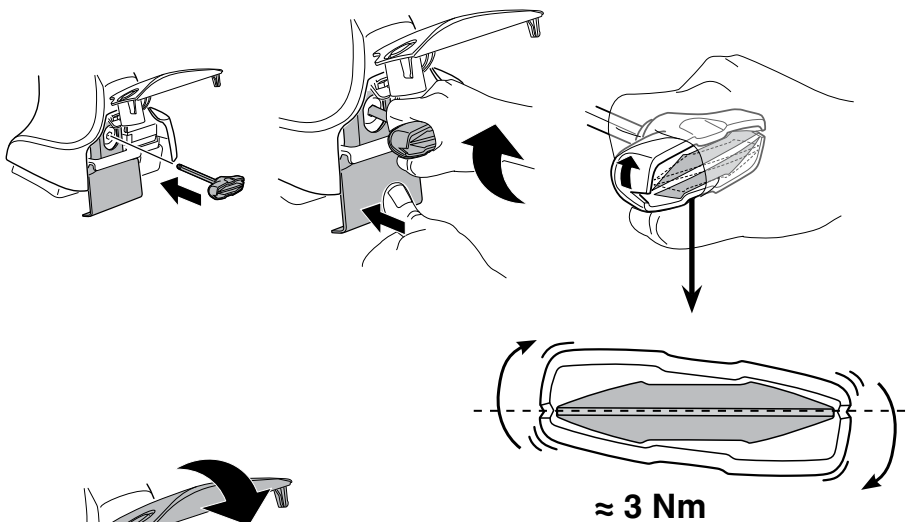
CZ	Pokręřta багаžnika dokręcaj naprzemiennie.
SK	Dofahajte striedavo
SLO	Privijajte izmenično.
HR	Naizmjenično zategnite
HU	Egymástól függetlenül szorítandó
GR	Σφιγίγτες εναλάξ
TR	Dönüşümlü sıkın

中文 交替拧紧

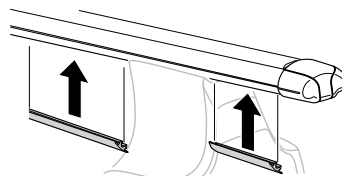
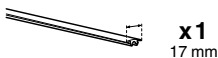
한국어 번갈아 가며 조이십시오.

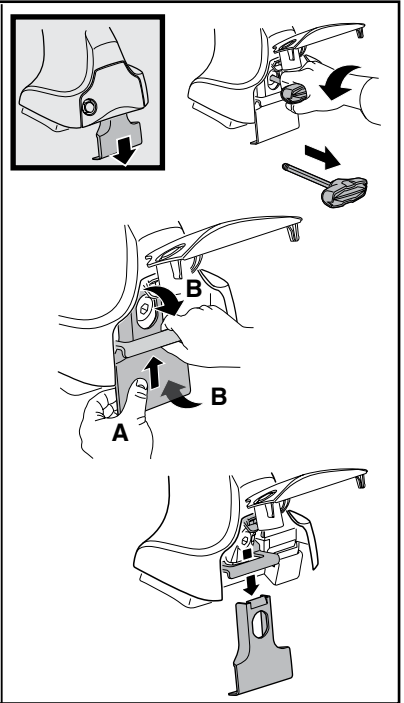
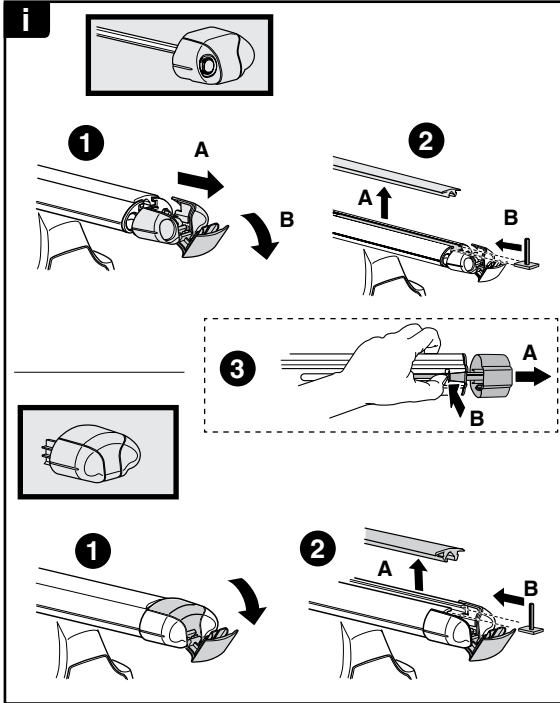
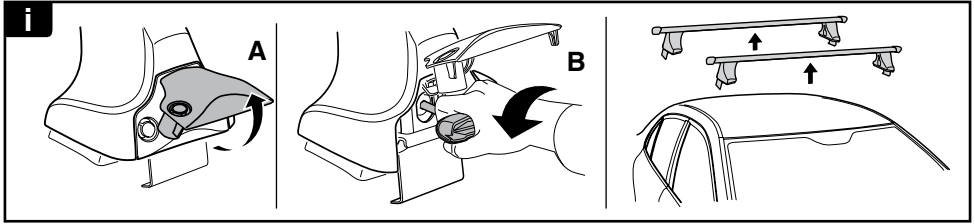
日本語 交互に締め付けてください。

ไทย ชันในแบบสลับ

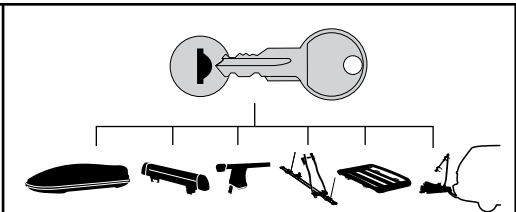


8

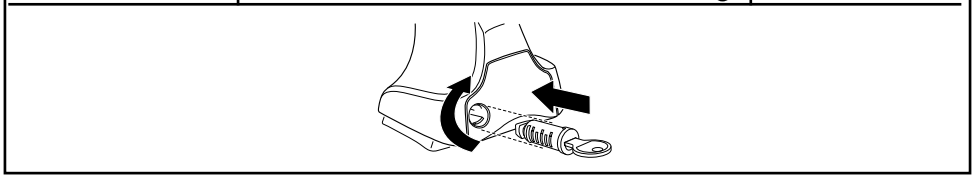




THULE
SWEDEN
**ONE
KEY
SYSTEM**



		(x4)
		(x6)
		(x8)
NA		(x10)
EUR		(x12)
ASIA		



WW ▶ Thule Sweden AB, Box 69, 330 33 Hillerstorp, SWEDEN
NA ▶ Thule Inc., 42 Silvermine Road, Seymour, Connecticut 06483, USA

info@thule.com
customer.service@thule.com

www.thule.com