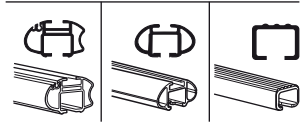
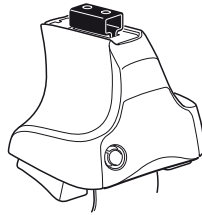


Kit 1460

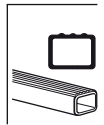
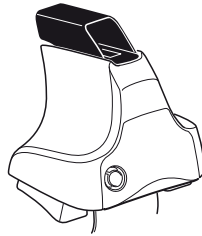
TOYOTA Noah (Mk.II.), 5-dr MPV, 07- (JPN)

TOYOTA Voxy (Mk.II.), 5-dr MPV, 07-

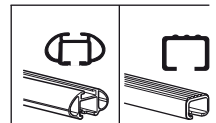
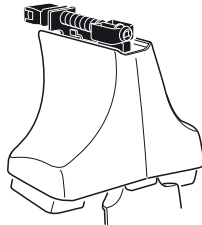
480R
754



480



750



Kit





1

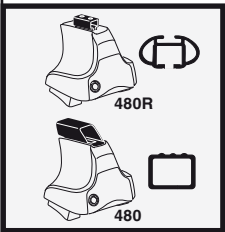
2

| | X |
|---|------|
| TOYOTA Noah (Mk.II.), 5-dr MPV, 07- (JPN) | 42,5 |
| TOYOTA Voxy (Mk.II.), 5-dr MPV, 07- | 42,5 |

1

2

| | Y |
|---|------|
| TOYOTA Noah (Mk.II.), 5-dr MPV, 07- (JPN) | 40,5 |
| TOYOTA Voxy (Mk.II.), 5-dr MPV, 07- | 40,5 |



1

2

| | X inch | X mm |
|---|----------------------------------|---------|
| TOYOTA Noah (Mk.II.), 5-dr MPV, 07- (JPN) | 42 ³ / ₈ " | 1076 mm |
| TOYOTA Voxy (Mk.II.), 5-dr MPV, 07- | 42 ³ / ₈ " | 1076 mm |

1

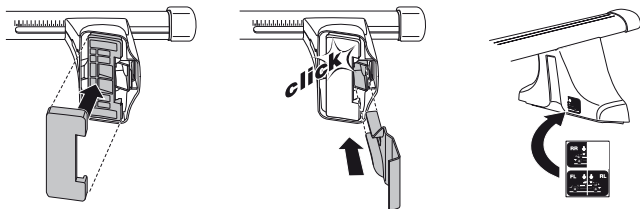
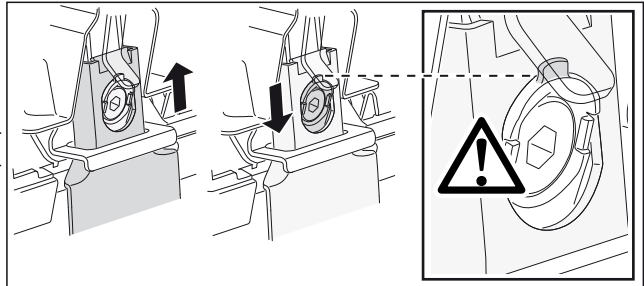
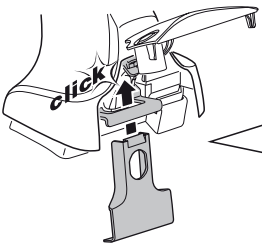
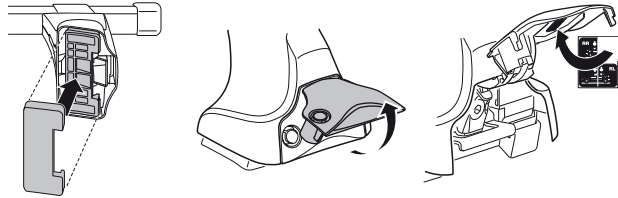
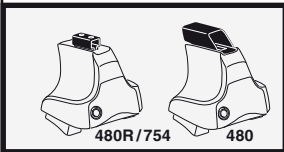
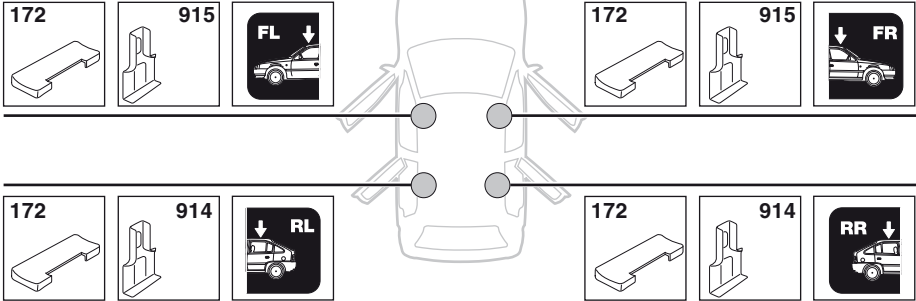
2

| | Y inch | Y mm |
|---|----------------------------------|---------|
| TOYOTA Noah (Mk.II.), 5-dr MPV, 07- (JPN) | 41 ⁵ / ₈ " | 1056 mm |
| TOYOTA Voxy (Mk.II.), 5-dr MPV, 07- | 41 ⁵ / ₈ " | 1056 mm |

4

TOYOTA Noah (Mk.II.), 5-dr MPV, 07- (JPN)

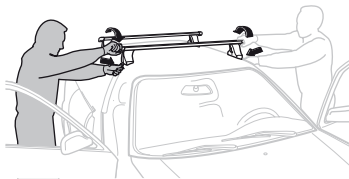
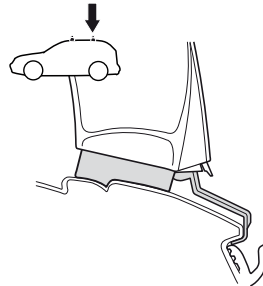
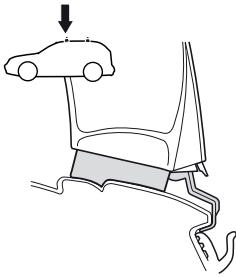
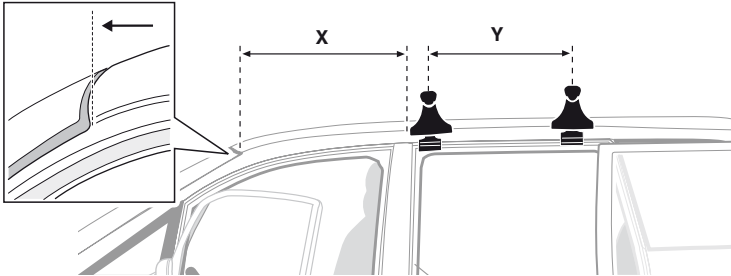
TOYOTA Voxy (Mk.II.), 5-dr MPV, 07-



5



| | X mm | Y mm | X inch | Y inch |
|---|--------|--------|---------|--------|
| TOYOTA Noah (Mk.II.), 5-dr MPV, 07- (JPN) | 825 mm | 710 mm | 32 1/2" | 28" |
| TOYOTA Voxy (Mk.II.), 5-dr MPV, 07- | 825 mm | 710 mm | 32 1/2" | 28" |



GB/US Tighten alternately

D Die Schrauben abwechselnd anziehen

F Serrer alternativement chaque côté

NL Afwisselend aan de linker- en de rechterkant aandraaien

I Alternare il serraggio delle viti

E Apretar alternativamente

PT Aperte alternadamente

S Dra åt växelvis

FIN Kierrä vuorotellen

EST Pinguldage vaheldumisi

LAT Pielvelciet pamišus

LIT Užsukinėkite pakaitomis

PL Śruby dokręcaj naprzemiennie

RU Затягивайте попеременно

CZ Pokręťta bagażníka dokręcaj dokręcaj naprzemiennie.

SK Doťahujte striedavo

SLO Privijajte izmenično.

HR Naizmjenično zategnite

HU Egymástól függetlenül szorítandó

GR Σφιγγετε εναλλάξ

TR Dönüşümlü sıkın

中文 交替拧紧

한국어 번갈아 가며 조이십시오.

日本語 交互に締め付けてください。

ไทย ชั้้นโน้บแบบสลับ

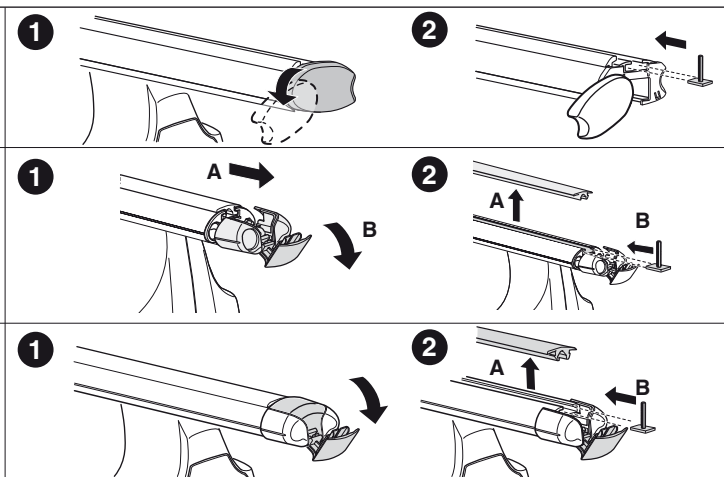
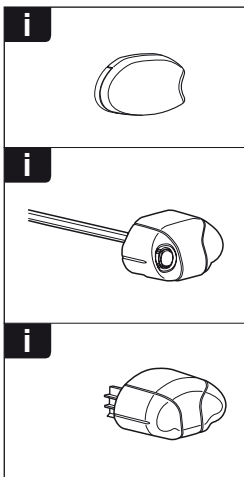
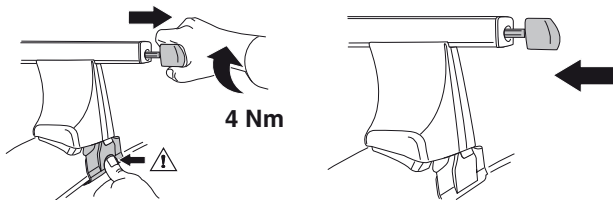
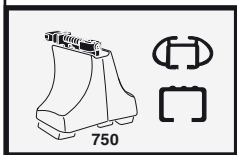
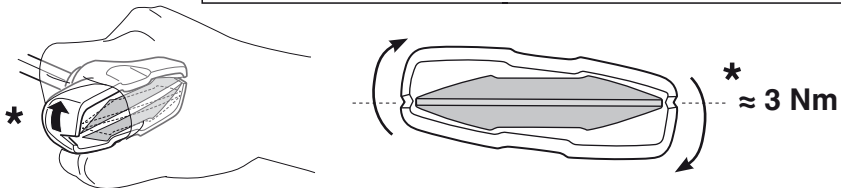
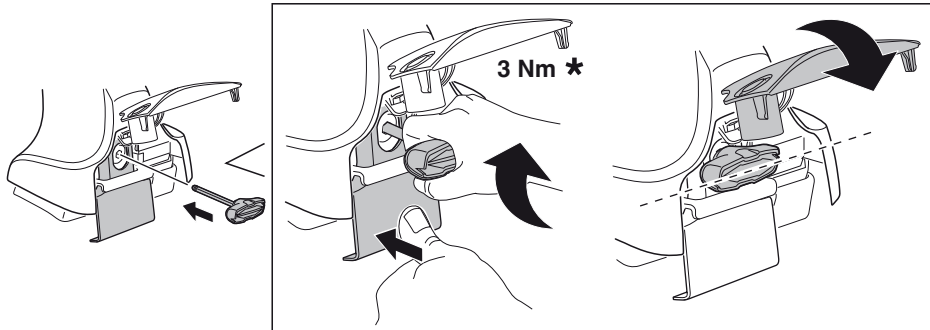
6



480R/754



480





THULE
SWEDEN
**ONE
KEY
SYSTEM**



- 544** (x4)
- 596** (x6)
- 588** (x8)
- NA **510** (x10)
- EUR **452** (x12)
- ASIA



WW ▶ Thule Sweden AB, Box 69, 330 33 Hillerstorp, SWEDEN
NA ▶ Thule Inc., 42 Silvermine Road, Seymour, Connecticut 06483, USA

info@thule.com
customer.service@thule.com

www.thule.com