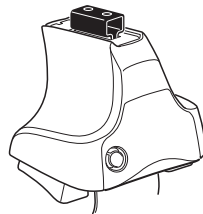
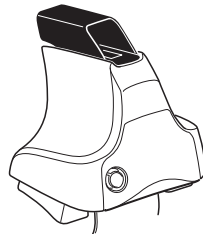
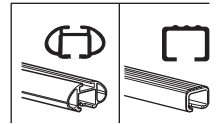


# Kit 1710

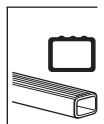
VOLKSWAGEN Golf VII, 5-dr Hatchback, 13-



**754** Rapid System  
**480R** Rapid Traverse (North America)



**480** Traverse (North America)



**754 Rapid System**  
**480R Rapid Traverse (North America)**

---

**754 Rapid System**  
**480R Rapid Traverse (North America)**

---

**480 Traverse (North America)**

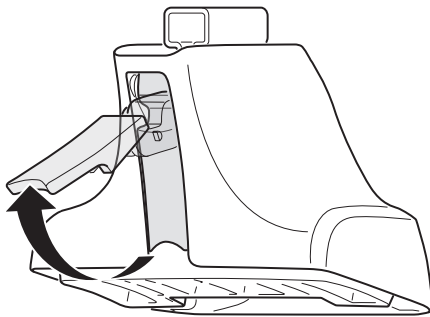
x2	x2 23 mm	x1 17 mm	x2 23 mm	x2
x2	x2 23 mm	x2 23 mm	x2	x2
x4	x4	x2	x2	
x4	x4	x4		

(North America)

x1	x2	x2
x1	x1	x4
x2	x1	x1

**Kit**

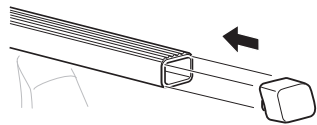
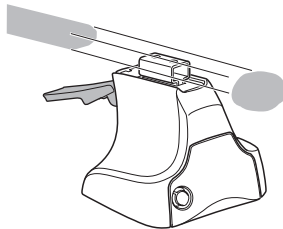
1



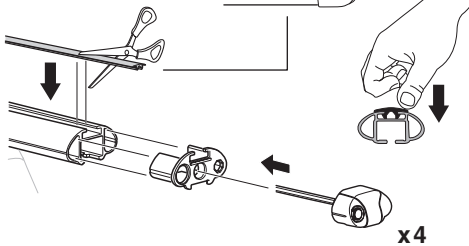
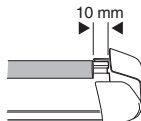
2



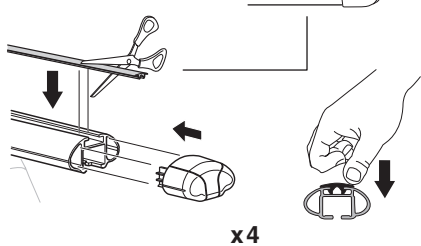
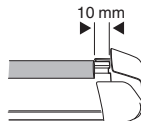
754 Rapid System  
480R Rapid Traverse  
(North America)



x4



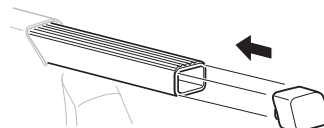
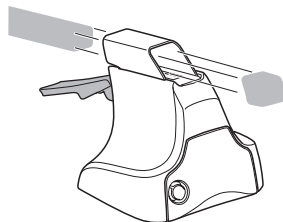
x4



x4

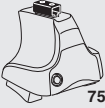


480 Traverse  
(North America)

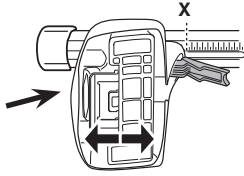


x4

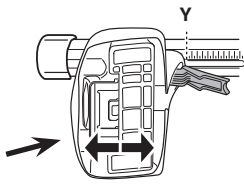
**3**



**754** Rapid System



	<b>X</b>
<b>VOLKSWAGEN Golf VII, 5-dr Hatchback, 13-</b>	<b>39</b>



	<b>Y</b>
<b>VOLKSWAGEN Golf VII, 5-dr Hatchback, 13-</b>	<b>31</b>

**3**



**480R** Rapid Traverse



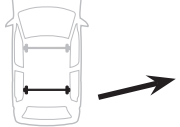
**480** Traverse



**(North America)**

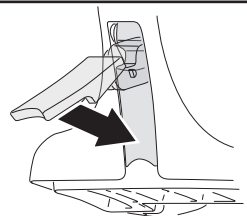


	<b>X inch</b>	<b>X mm</b>
<b>VOLKSWAGEN Golf VII, 5-dr Hatchback, 13-</b>	<b>41"</b>	<b>1041 mm</b>



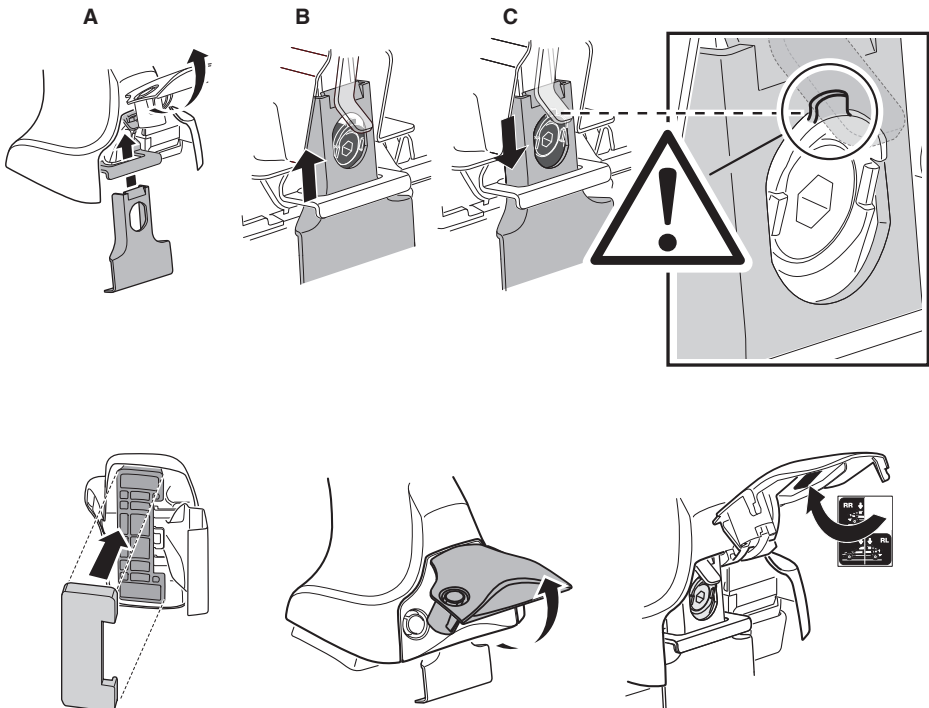
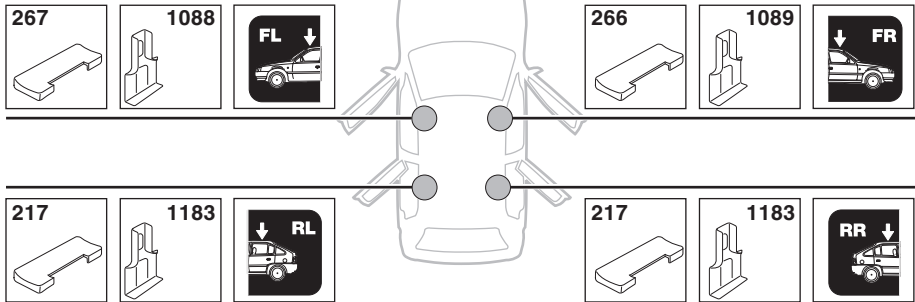
	<b>Y inch</b>	<b>Y mm</b>
<b>VOLKSWAGEN Golf VII, 5-dr Hatchback, 13-</b>	<b>37 7/8"</b>	<b>961 mm</b>

**4**

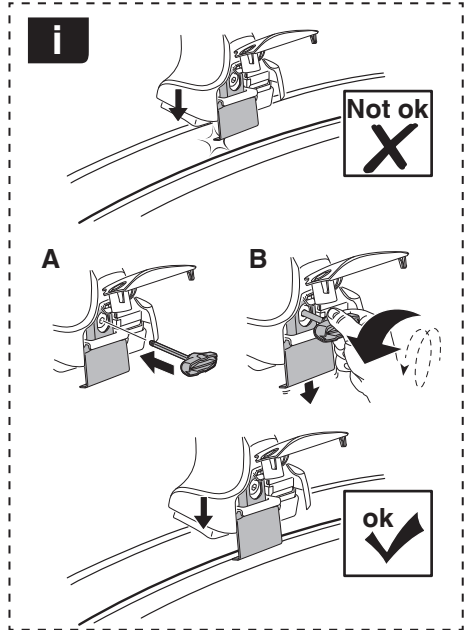
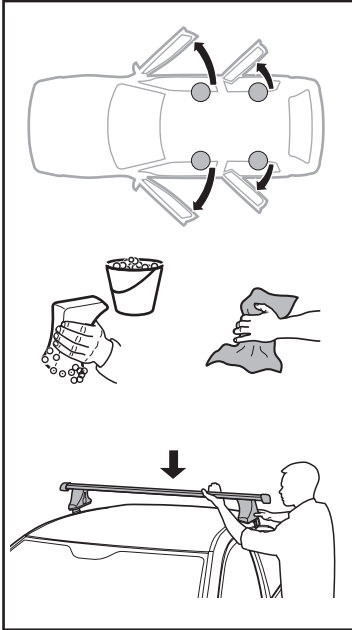


4

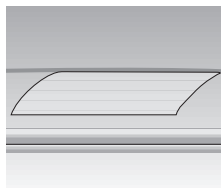
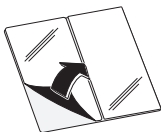
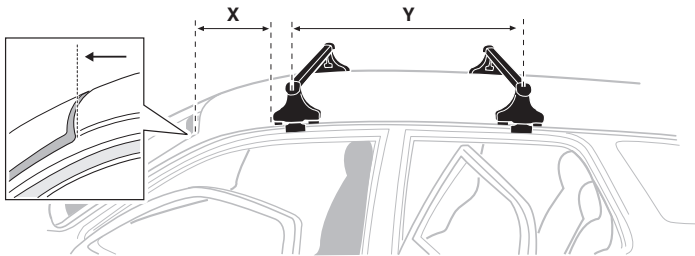
VOLKSWAGEN Golf VII, 5-dr Hatchback, 13-



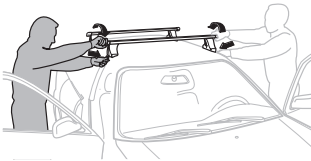
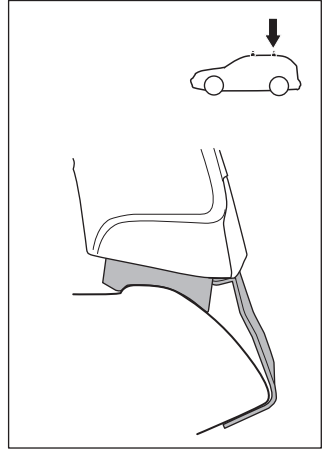
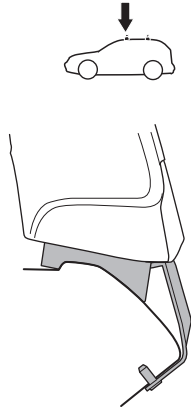
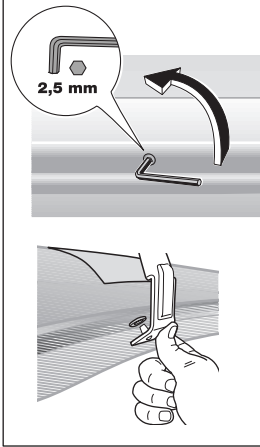
5



	X mm	Y mm	X inch	Y inch
VOLKSWAGEN Golf VII, 5-dr Hatchback, 13-	230 mm	710 mm	9"	28"

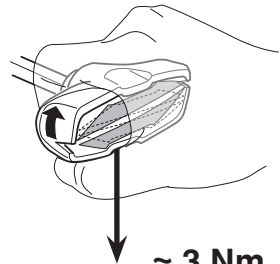
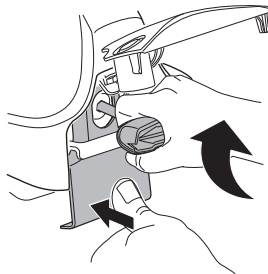
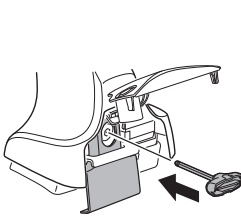


6

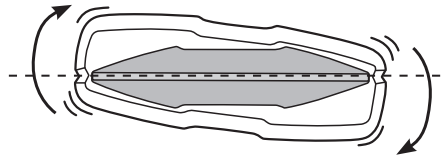
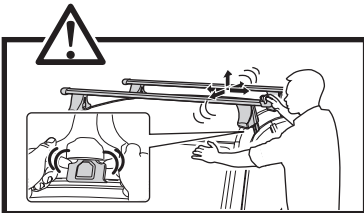


- GB/US** Tighten alternately  
**D** Die Schrauben abwechselnd anziehen  
**F** Serrer alternativement chaque côté  
**NL** Afwisselend aan de linker- en de rechterkant aandraaien  
**I** Alternare il serraggio delle viti  
**E** Apretar alternativamente  
**PT** Aperte alternadamente  
**S** Dra åt växelvis  
**FIN** Kierrä vuorotellen  
**EST** Pinguldage vaheldumisi  
**LAT** Pievelciēt pamišus  
**LIT** Užsukinėkite pakaitomis  
**PL** Śruby dokręcaj naprzemiennie  
**RU** Затягивайте попеременно

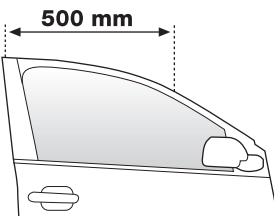
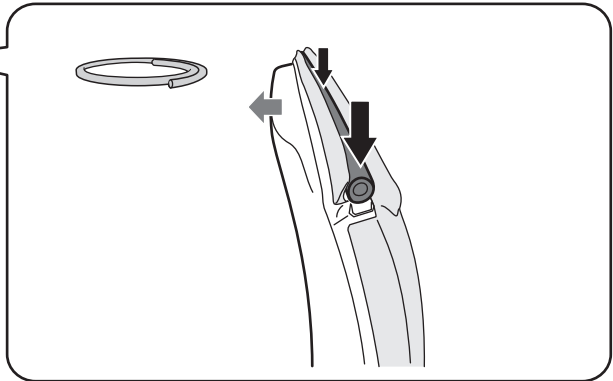
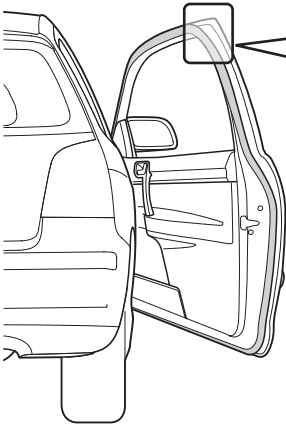
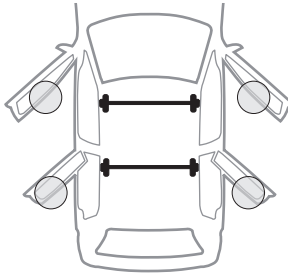
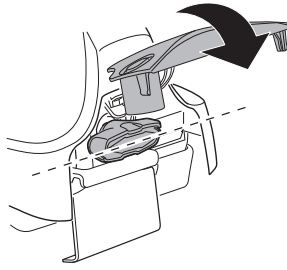
- CZ** Pokręťta bagażnika dokręcaj naprzemiennie.  
**SK** Doťahujte striedavo  
**SLO** Privijajte izmenično.  
**HR** Naizmjenično zategnite  
**HU** Egymástól függetlenül szorítandó  
**GR** Σφιγγετε εναλλάξ  
**TR** Dönüşümlü sıkın  
**中文** 交替拧紧  
**한국어** 번갈아 가며 조이십시오.  
**日本語** 交互に締め付けてください。  
**ไทย** ชั่งนแบบสลับ



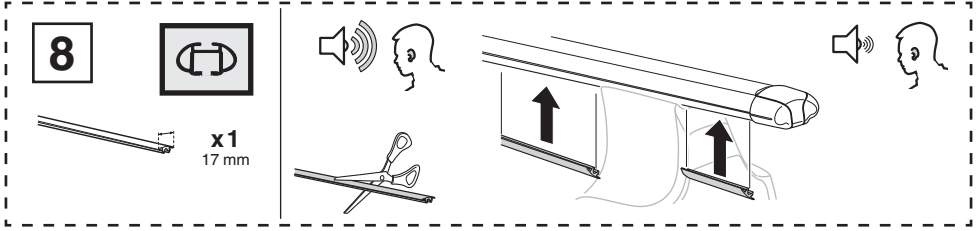
≈ 3 Nm



7

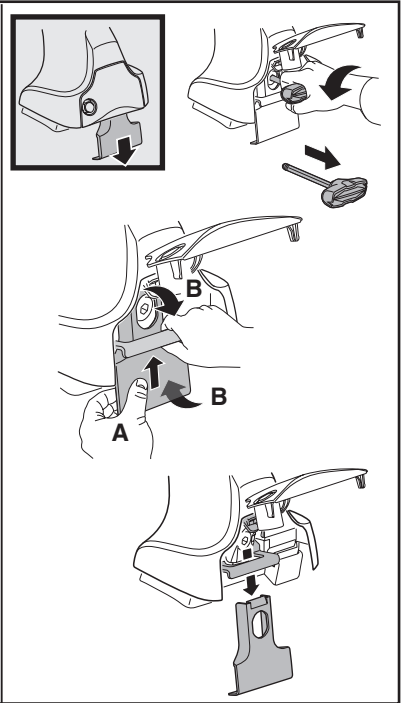
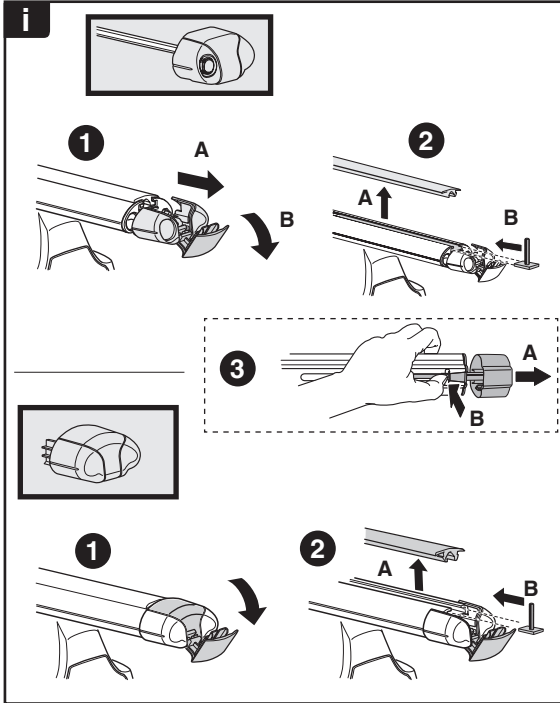
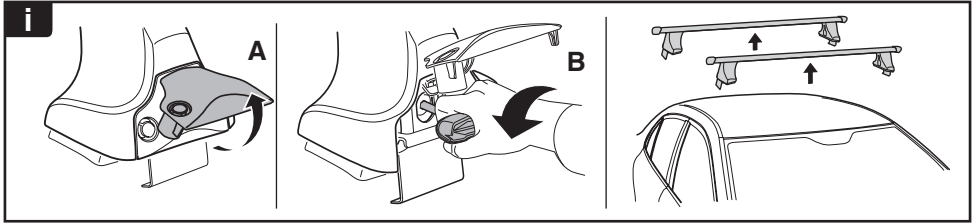




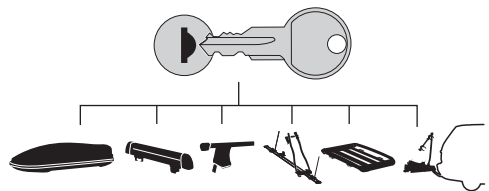




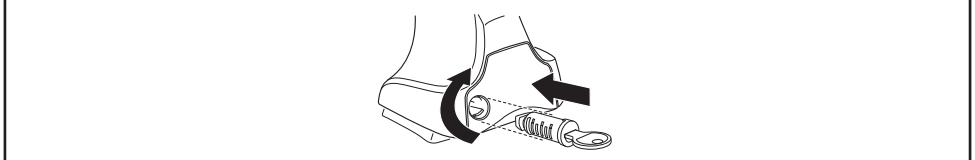




**THULE**  
SWEDEN  
**ONE  
KEY  
SYSTEM**



		(x4)
		(x6)
		(x8)
NA		(x10)
EUR		(x12)
ASIA		



WW ▶ Thule Sweden AB, Box 69, 330 33 Hillerstorp, SWEDEN  
NA ▶ Thule Inc., 42 Silvermine Road, Seymour, Connecticut 06483, USA

info@thule.com  
customer.service@thule.com

www.thule.com